



32


MARSHALLWHITE

32 York Street
Prahran





Trendsetting Style and Lifestyle

A state of the art design by architect Cera Stribley has created this sensational brand new inner urban sanctuary of style. An aesthetically striking white and black palette throughout is softened by sublime marble, timber cabinetry and an abundance of floor to ceiling glass. Polished concrete floors flow through the open plan living and dining room with a fabulous wood fire and full width glass doors opening to a gorgeous landscaped west-facing courtyard with premium built in BBQ and seating. The stunning gourmet kitchen is appointed with marble benches, integrated Miele appliances and walk in pantry. A beautiful bedroom with designer en-suite, steam shower and built in robe is tranquilly set on the ground level opening to a private decked courtyard. Two additional double bedrooms with built in robes upstairs, are accompanied by a chic marble bathroom and study nook. Idyllically situated near Chapel St, Hawksburn Village, schools, trams and Victoria Gardens, it also includes alarm, video intercom, powder-room, Euro-laundry and secure off street parking with auto gates.

32yorkstreet-prahran.com

3  2  1 

Auction Saturday 3rd March at 1.30pm

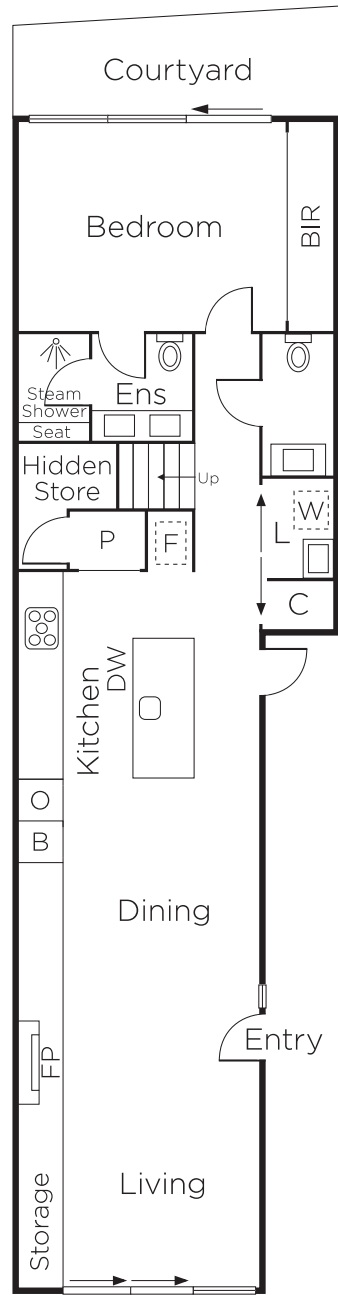
Fraser Cahill
0400 592 572

Richard Mackinnon
0414 822 579

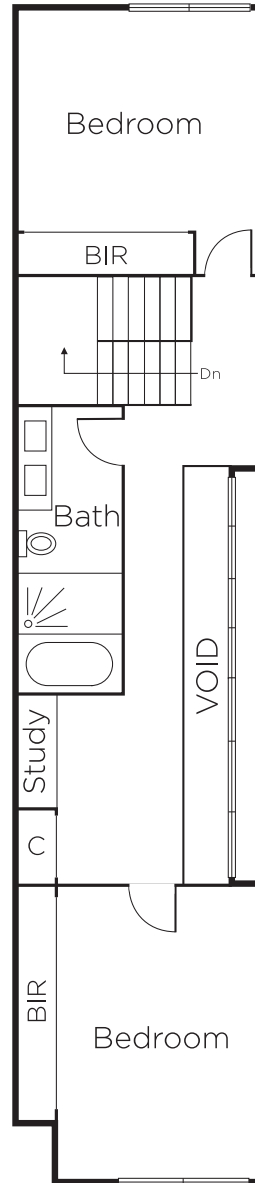
James McCormack
0410 503 389


MARSHALLWHITE

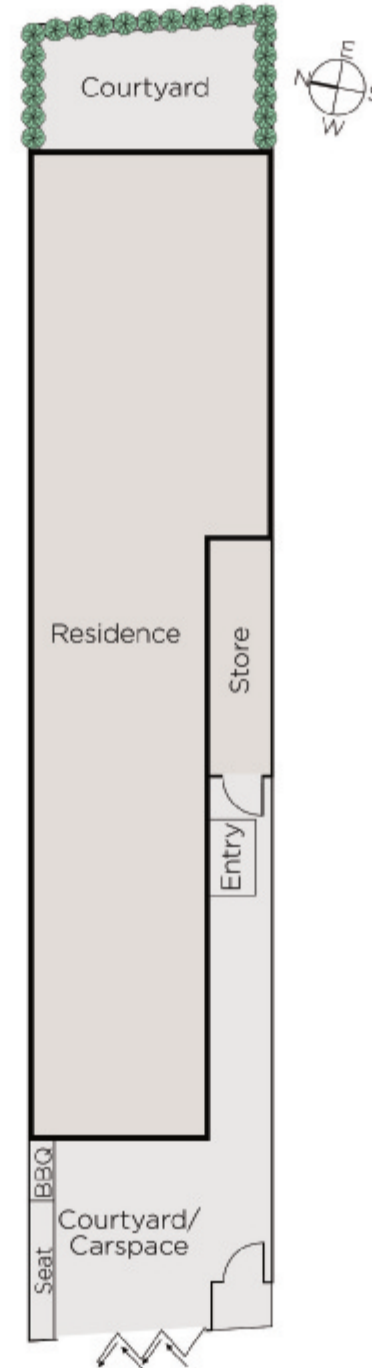
1111 High Street, Armadale



GROUND FLOOR



FIRST FLOOR



Disclaimer: Information provided is believed to be accurate as at the date of printing, no responsibility is taken for any errors or omissions. It is your responsibility to obtain independent, professional advice. Personal information collected from you is for security purposes and to contact you should the property sell prior to auction. We may use this information to provide you with other real estate services including referrals to authorised financial services' providers. Visit our website at www.marshallwhite.com.au for our privacy policy.