



MARSHALLWHITE

32 Hartwood Street
Kew East



Classic Californian with Enduring Family Appeal

This charming tuck point brick Californian Bungalow c1920 exudes both period character and style. Featuring a wide polished timber hallway, formal sitting room with OFP, four bedrooms with BIRs, main with WIR and ensuite, a pristine family bathroom, powder room and study. Through to an expansive family domain highlighted by huge picture windows capturing northern sunshine; plus a stylish kitchen/meals equipped with granite bench-tops, quality Euro appliances, WIP and adjacent laundry flowing to a covered dining and entertaining deck with overhead heater - perfect for indoor/outdoor relaxation and enjoyment.

32hartwoodstreet-keweast.com

4 2 2

Auction Saturday 17th February at 11.30am

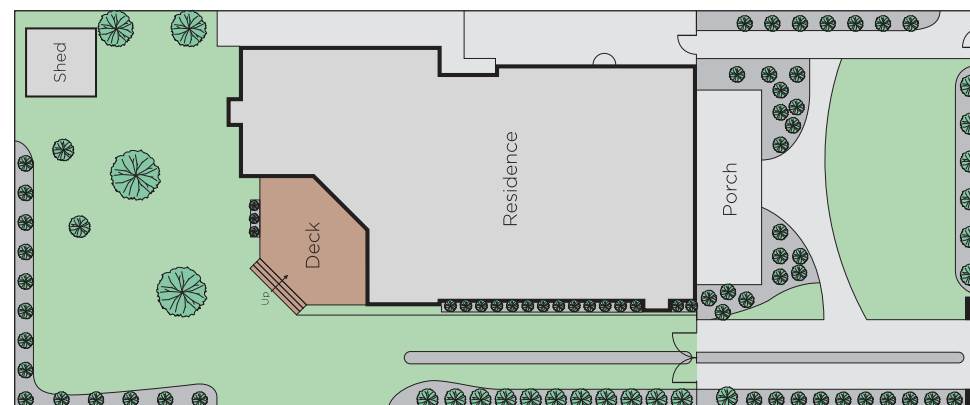
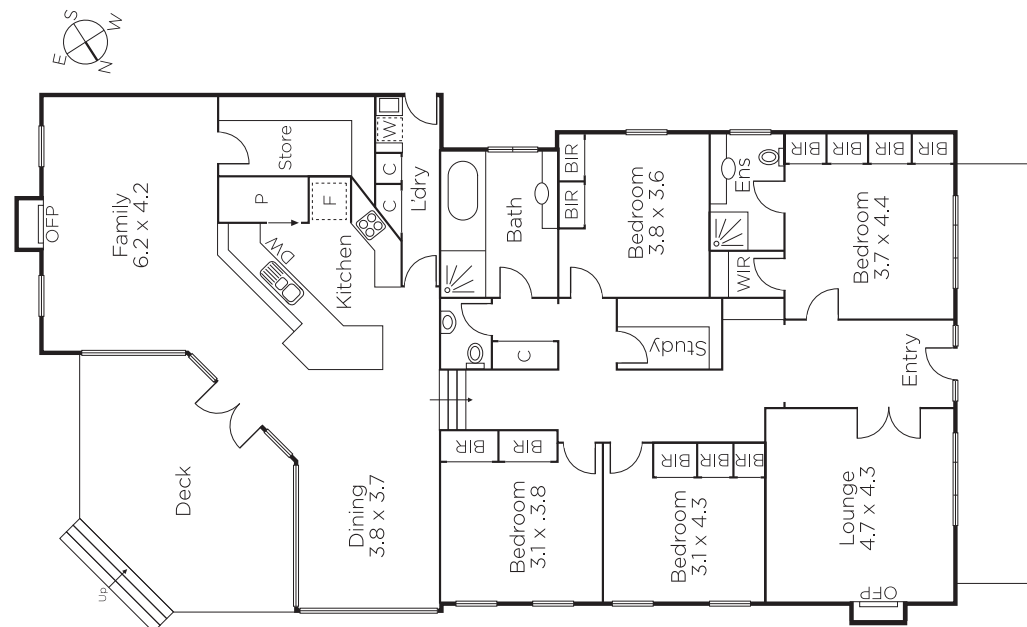
Nikki Van Gulick
0419 325 911

James Tostevin
0417 003 333

Duane Wolowiec
0418 567 581

MARSHALLWHITE

801 Glenferrie Road, Hawthorn



Disclaimer: Information provided is believed to be accurate as at the date of printing, no responsibility is taken for any errors or omissions. It is your responsibility to obtain independent, professional advice. Personal information collected from you is for security purposes and to contact you should the property sell prior to auction. We may use this information to provide you with other real estate services including referrals to authorised financial services providers. Visit our website at www.marshallwhite.com.au for our privacy policy.