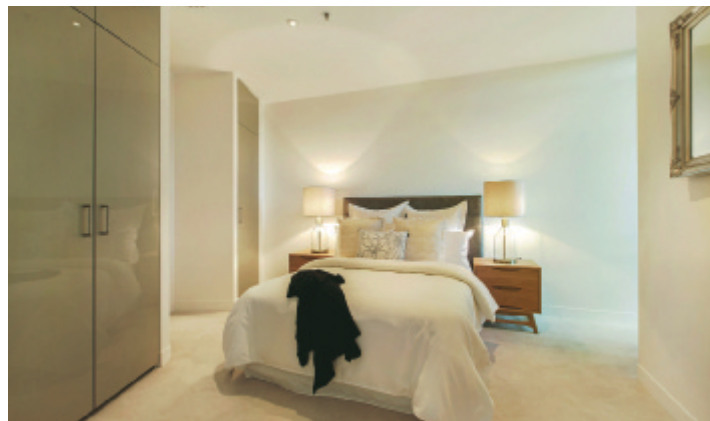





MARSHALLWHITE
ONE

315/480 Riversdale Road
Hawthorn East



'Aerial': Al fresco Living and Brilliant Amenities

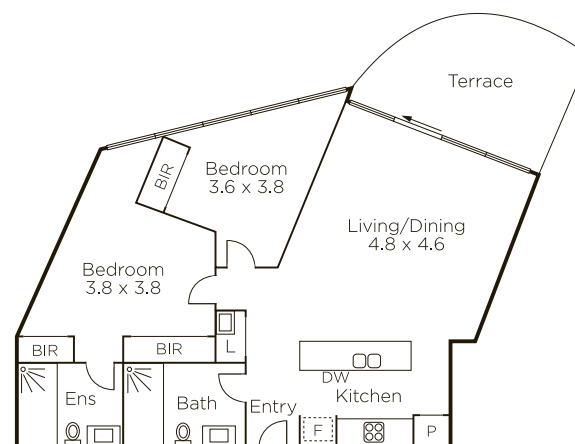
With a generous entertainers' balcony and lovely garden surrounds, this impressively proportioned, two bedroom apartment is part of the highly-regarded Aerial building with an extraordinary selection of amenities that include a rooftop swimming pool and outdoor kitchen, 12 seat cinema, Function Room and 24 hour Concierge. Open and airy with a Miele-equipped kitchen, integrated appliances and marble bench tops, the home's open-plan living flows effortlessly to the balcony and introduces a remarkable sense of serenity that belies its highly central location. Both the main bathroom and the ensuite are fully-tiled and superbly appointed, whilst there are robes in both bedrooms and enough space for a desk in the master suite, as well as secure video entry, basement parking and elevator access. Within walking distance of not only first class cafes and restaurants, but also all modes of transport, shopping and even the Rivoli Cinema.

315-480riversdalerd-hawthorneast.com 2 2 1

Private Sale

Bethany Wilkinson 0449 285 813
James Hill 0402 421 154

801 Glenferrie Road Hawthorn
9822 9999 mwone.com.au



Disclaimer: Information provided is believed to be accurate as at the date of printing, no responsibility is taken for any errors or omissions. It is your responsibility to obtain independent, professional advice. Personal information collected from you is for security purposes to contact you should the property sell prior to auction. We may use this information to provide you with other real estate services including referrals to authorized financial services' providers. Visit our website at www.mwone.com.au for our privacy policy.