



  
MARSHALLWHITE  
ONE

3/15 Hampden Road  
Armadale



## Delightful Armadale Sanctuary

Evoking the feel of a beautiful sanctuary in the vibrant heart of Armadale's cosmopolitan action, this north-facing, two bedroom, garden apartment enjoys a peaceful setting, delightfully leafy outlooks and the promise of outstanding living or investing.

Tastefully refurbished, the home brings a relaxed sense of exclusivity to one of Armadale's premier, tree-lined streets. Offering plenty of living space, the kitchen and semi-attached lounge/dining flow to a pretty northern courtyard, enhanced by the dappled sunlight of established trees. Highly secure with intercom entry and highly-coveted adjacent carspace, the home's bedrooms are spacious with built in robes and the kitchen and bathroom are well appointed. Within metres of High St and its renowned cafes, restaurants and strip shopping, this is an exclusive, blue ribbon location that also offers easy access to the city and Chapel St by tram and/or train.

3-15hampdenroad-armadale.com



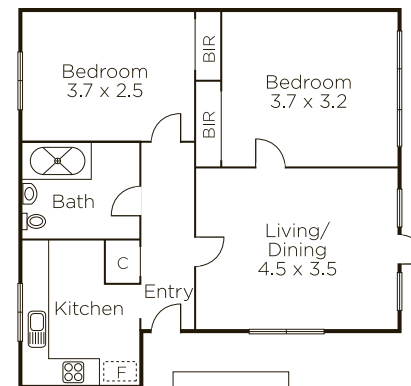
Auction Thursday 7th September at 6pm

Matt Giulieri 0407 851 206

Joseph Ben-Danan 0408 135 948

1111 High Street Armadale

9822 9999 mwone.com.au



  
**MARSHALLWHITE**  
**ONE**

Disclaimer: Information provided is believed to be accurate as at the date of printing, no responsibility is taken for any errors or omissions. It is your responsibility to obtain independent, professional advice. Personal information collected from you is for security purposes to contact you should the property sell prior to auction. We may use this information to provide you with other real estate services including referrals to authorized financial services providers. Visit our website at [www.mwone.com.au](http://www.mwone.com.au) for our privacy policy.