



MARSHALLWHITE

3/10 Sandown Street
Brighton



Golden Mile Height of Luxury Refinement

In an exclusive block with direct beach access, this internally 278sqm approx. ground floor apartment exudes luxury and refinement. Expansive open plan living and dining areas provide the optimal setting for entertaining with priceless views and an alfresco terrace overlooking the beachfront gardens. A gourmet kitchen showcases Gaggenau appliances and superb Italian marble benchtops. 3 magnificently sized bedrooms offer abundant storage and private marble ensuites, with 2 opening onto a tranquil second terrace. Comprehensive features include a powder room, laundry, 2 car parks and resort style pool & tennis court.

3-10sandownstreet-brighton.com

3 3 2

Private Sale

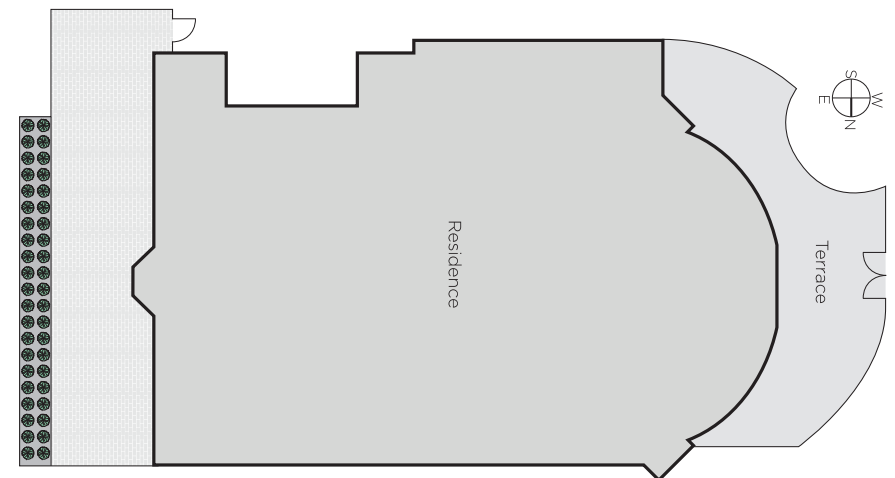
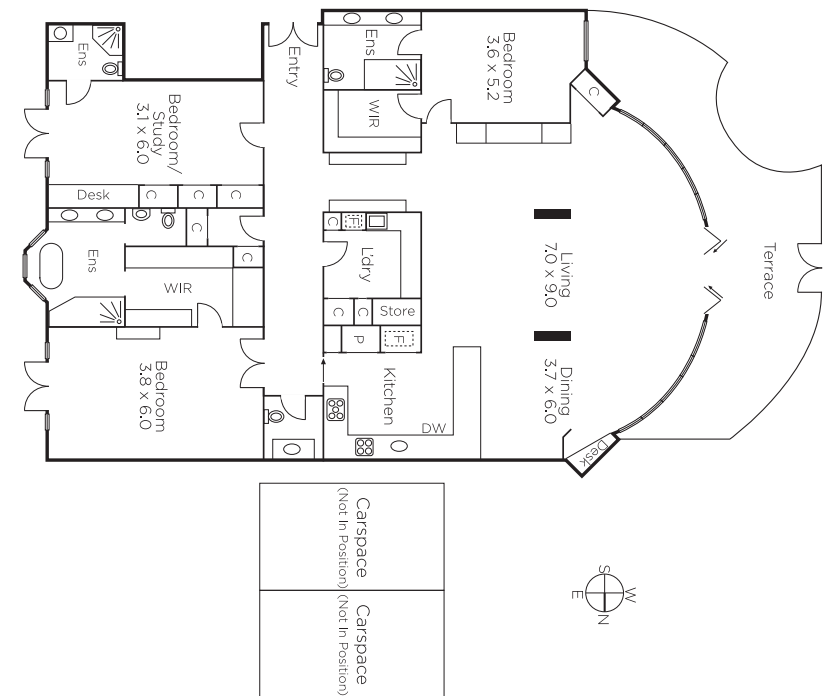
Andrew Campbell
0419 366 545

Ben Vieth
0404 084 793

Jack Johnstone
0426 241 841


MARSHALLWHITE

225 Bay Street, Brighton



Disclaimer: Information provided is believed to be accurate as at the date of printing, no responsibility is taken for any errors or omissions. It is your responsibility to obtain independent, professional advice. Personal information collected from you is for security purposes and to contact you should the property sell prior to auction. We may use this information to provide you with other real estate services including referrals to authorised financial services providers. Visit our website at www.marshallwhite.com.au for our privacy policy.