



MARSHALLWHITE
ONE

3/10-16 White Street
Glen Iris



‘Eden Court’: Spacious Garden Apartment

A home that blissfully flows to a large rear courtyard with a pretty garden backdrop, whilst enjoying the benefits of an attractive communal garden at the front, this well-presented, two bedroom apartment has been freshly painted and carpeted, is ready to be moved-into or leased and is certain to generate broad appeal. Just metres from Wattleree Rd and enjoying a beautiful, tree-lined, streetscape, the home features an open-plan kitchen / meals / living which flows to a large paved courtyard and in-turn enjoys direct access to the block’s secure parking bay. Also with front intercom entry, this secure ground-floor residence features robes in each bedroom and laundry facilities in the bathroom. Highly central, this terrific Glen Iris position allows you to wander to some outstanding cafes or restaurants, jump on a city-bound tram or enjoy the convenience of Malvern Central Shopping Centre just around the corner.

3-10-16whitestreet-gleniris.com

2 1 1

Auction Saturday 24th March at 1.30pm

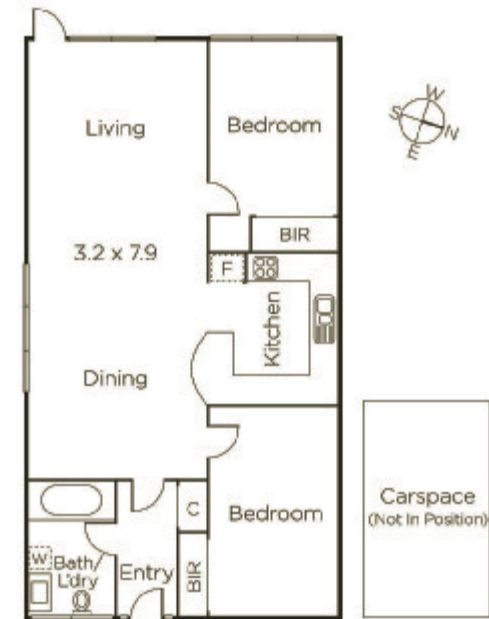
Joseph Ben-Danan 0408 135 948

Jack Moss 0439 378 954

Jack Nicol 0400 774 428

1111 High Street Armadale

9822 9999 mwone.com.au



MARSHALLWHITE
ONE

Disclaimer: Information provided is believed to be accurate as at the date of printing, no responsibility is taken for any errors or omissions. It is your responsibility to obtain independent, professional advice. Personal information collected from you is for security purposes to contact you should the property sell prior to auction. We may use this information to provide you with other real estate services including referrals to authorized financial services providers. Visit our website at www.mwone.com.au for our privacy policy.