




MARSHALLWHITE

31 New Street
Armadale





Serene, Stylish, Single Level Appeal

Perfectly situated for a tranquil, peaceful lifestyle yet offering close proximity to every Armadale amenity, this picturesque Victorian residence's stunning indoor and outdoor dimensions deliver irresistible single level appeal.

The wide entrance hall introduces three bedrooms, high ceilings, and a stylish bathroom. The superbly appointed European kitchen with stone benches and a light-filled, spacious living and dining room open through bi-fold doors to a gorgeous private north-facing garden oasis surrounded by leafy hedges and Manchurian Pears and boasting a large stone entertaining terrace.

Walking distance to Victory Square, Orrong Park, Beatty Ave, Toorak station, High St shops and restaurants and schools, it also includes a Euro-laundry and pull down attic storage.

31newstreet-armadale.com

3  1 

Auction Saturday 9th December at 11.30am

Daniel Wheeler 0411 676 058

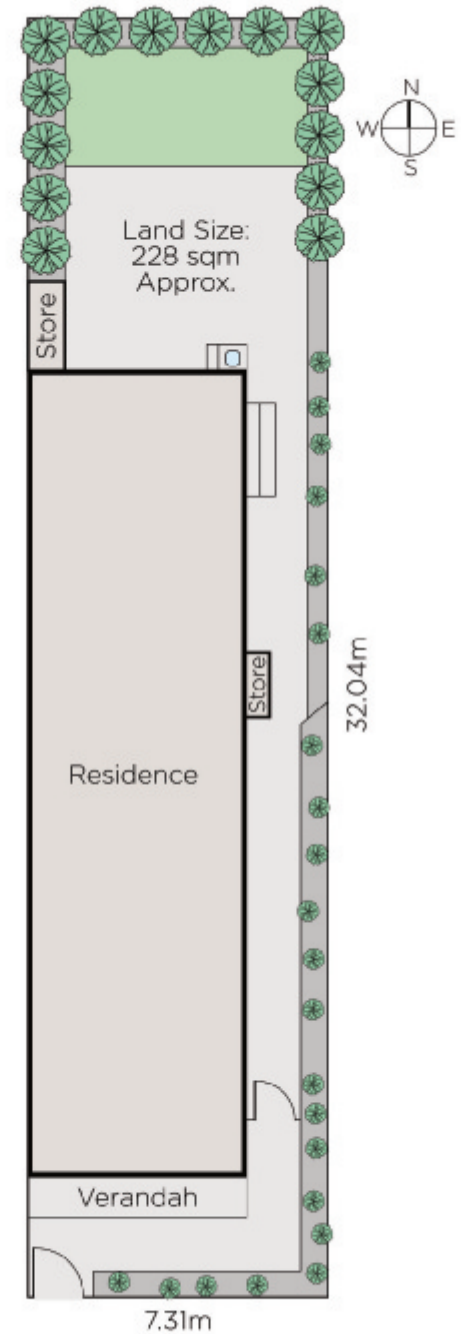
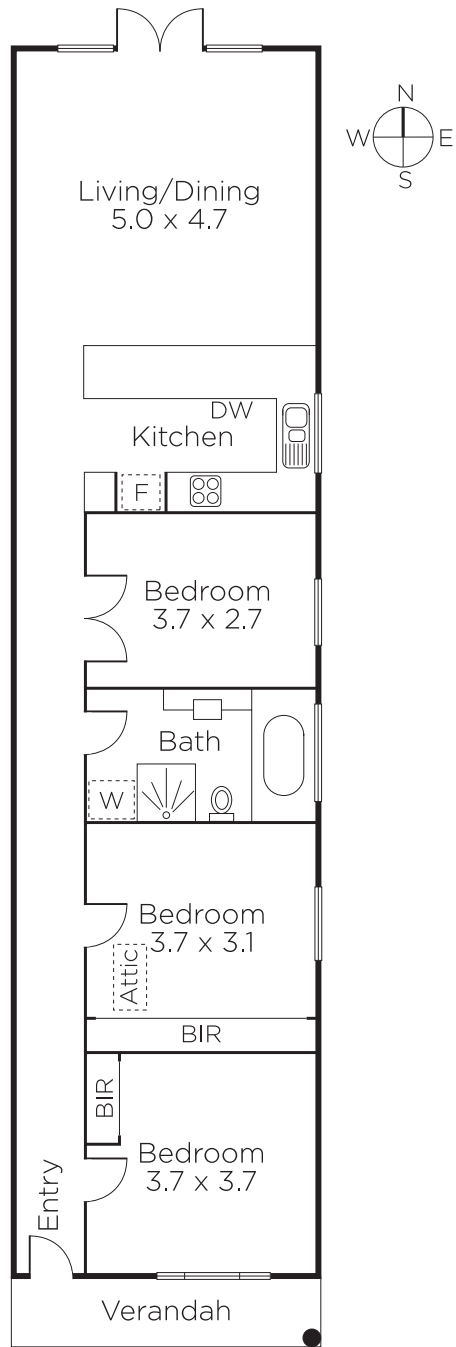
Clare Moloney 0401 546 441

Justin Krongold 0403 163 355

1111 High Street Armadale

marshallwhite.com.au


MARSHALLWHITE



Disclaimer: Information provided is believed to be accurate as at the date of printing, no responsibility is taken for any errors or omissions. It is your responsibility to obtain independent, professional advice. Personal information collected from you is for security purposes and to contact you should the property sell prior to auction. We may use this information to provide you with other real estate services including referrals to authorised financial services' providers. Visit our website at www.marshallwhite.com.au for our privacy policy.