




MARSHALLWHITE

31 Lansdowne Road
St Kilda East





Authentic Charm, Architectural Style

Set within absolutely stunning garden and pool surrounds, this totally captivating solid brick period residence impressively showcases a sensational blend of original charm and architecturally designed contemporary style close to trams, Orrong Rd Village and schools. The pale hue of the Baltic pine floors establishes a contemporary tone through the wide entrance hall, generous sitting room with bay window, formal dining room and study. A full height pivot door and oak floors delineates the contemporary extension which comprises a state of the art AEG kitchen with integrated Miele fridge/freezer and expansive living and dining room opening to the private northeast landscaped garden with solar-heated designer pool. Well-zoned accommodation encompasses the main bedroom with chic en-suite and built in robe, three double bedrooms with built in robes and two stylish bathrooms. Only recently completed, it also includes an alarm, zoned heating and cooling, laundry, sun-awnings, garage and auto gates.

31lansdownerroad-stkildaeast.com

4  3  3 

Auction Saturday 19th August at 10.30am

Fiona Ansell-Jones 0410 325 240

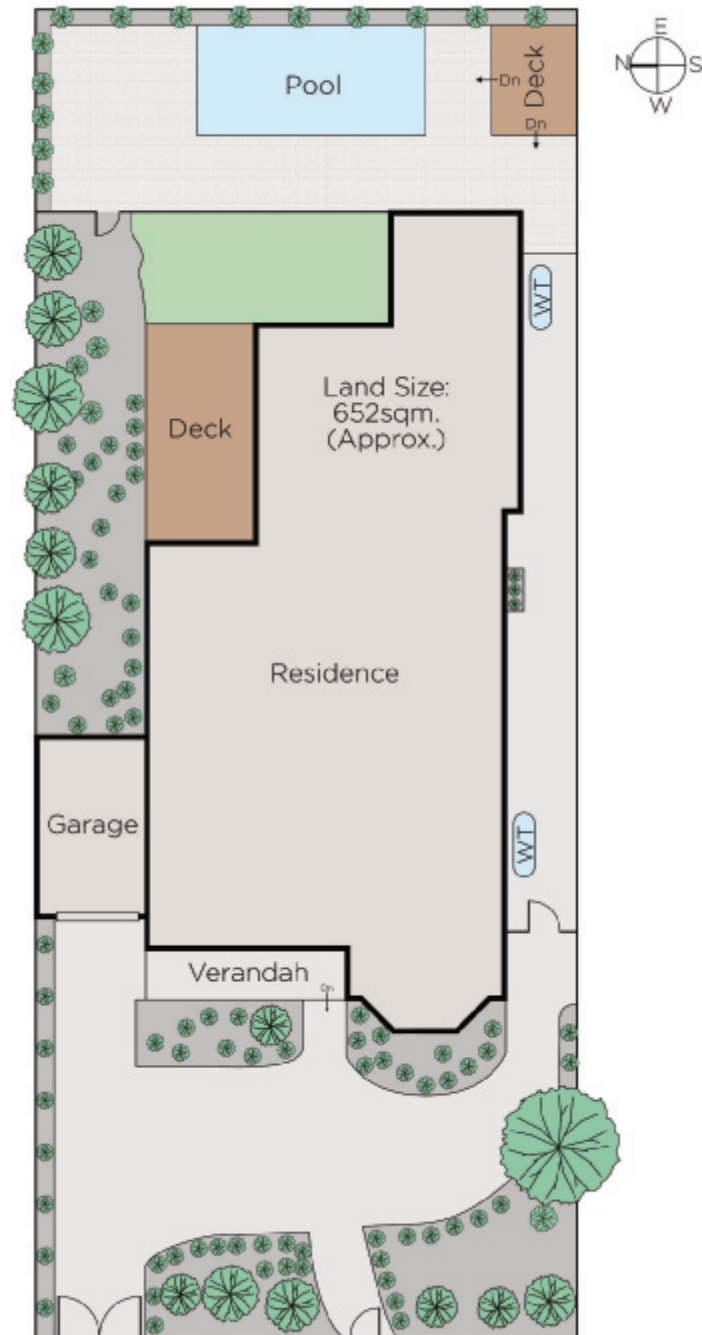
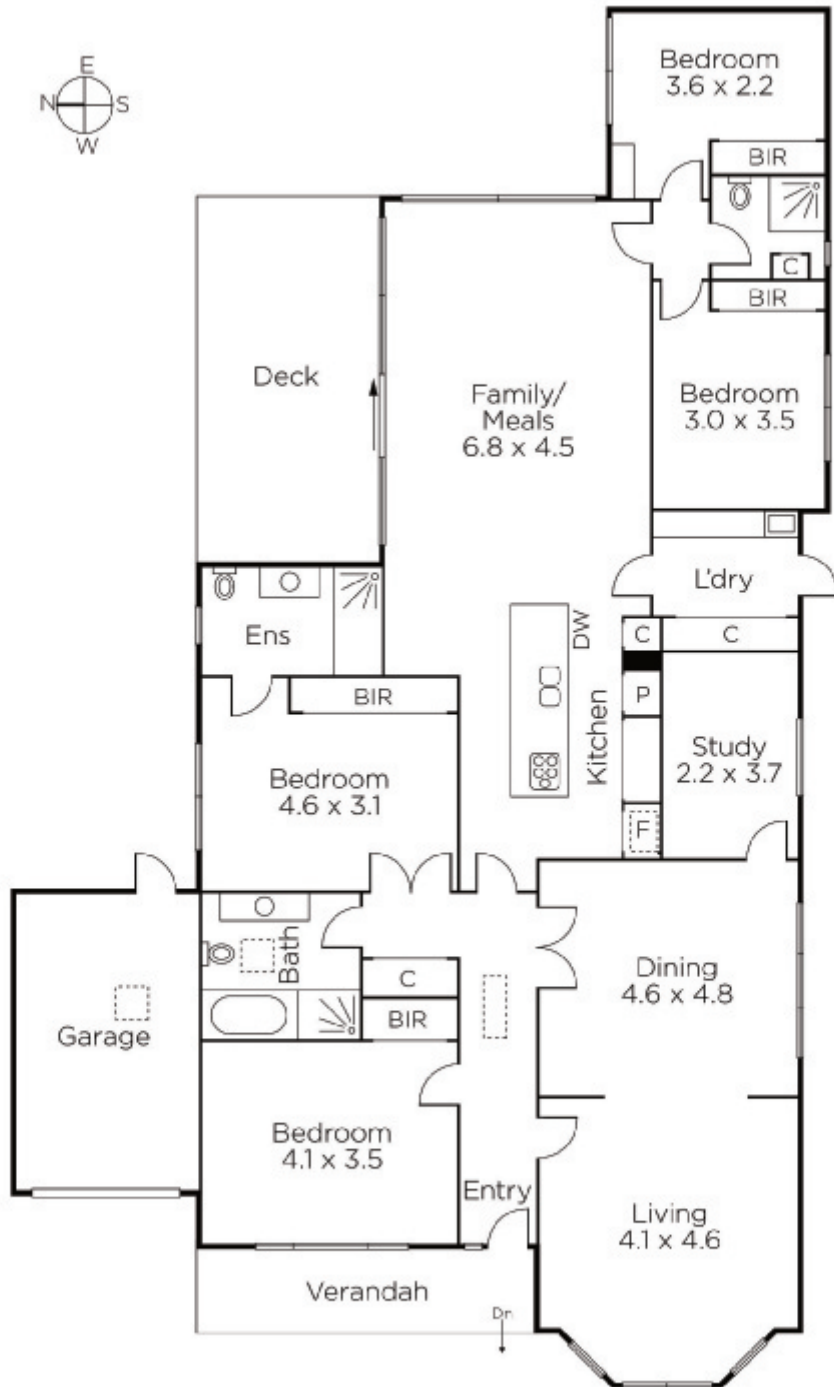
John Manton 0411 444 930

Sam Hobbs 0404 164 444

1111 High Street Armadale

marshallwhite.com.au


MARSHALLWHITE



Disclaimer: Information provided is believed to be accurate as at the date of printing, no responsibility is taken for any errors or omissions. It is your responsibility to obtain independent, professional advice. Personal information collected from you is for security purposes and to contact you should the property sell prior to auction. We may use this information to provide you with other real estate services including referrals to authorised financial services' providers. Visit our website at www.marshallwhite.com.au for our privacy policy.