



31


MARSHALLWHITE

31 Kasouka Road
Camberwell





"Riawena" - Standing Out from the Crowd

Superbly complementing the surrounding period streetscape, but with its own crisp white façade & stunning interior - this elegant family home is highlighted by beautiful and lush gardens delivering an instantly appealing living environment of the highest quality. Combining visual impact with immaculate presentation following total refurbishing inside and out which leaves a lasting impression. Preceded by a tessellated tile path and verandah the spacious, light-filled interior features a central double-arched hallway opening to a northern sitting and dining room with bay window and OFP, plus family living and dining area incorporating a superb timber kitchen with all-white Euro appliances - all of which opens to a sun-drenched sandstone courtyard with water feature, perfect for indoor/outdoor dining and entertaining with friends and family. Complemented by three bedrooms; front main with bay window, BIRs, WIR & ensuite, two at the rear; with BIRs, sparkling family bathroom, laundry and garden access. Other features include alarm, hydronic heating, R/C air conditioners, ample internal storage plus workshop & garden/potting shed, remote 2-door garage+storeroom with ROW. Land: 593sqm approx.

31kaouksaroad-camberwell.com

3  2  2 

Auction Saturday 16th September at 10.30am

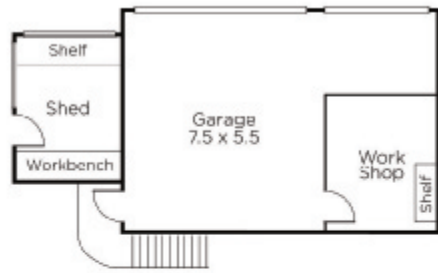
James Tostevin 0417 003 333

Sally O'Connell 0413 474 474

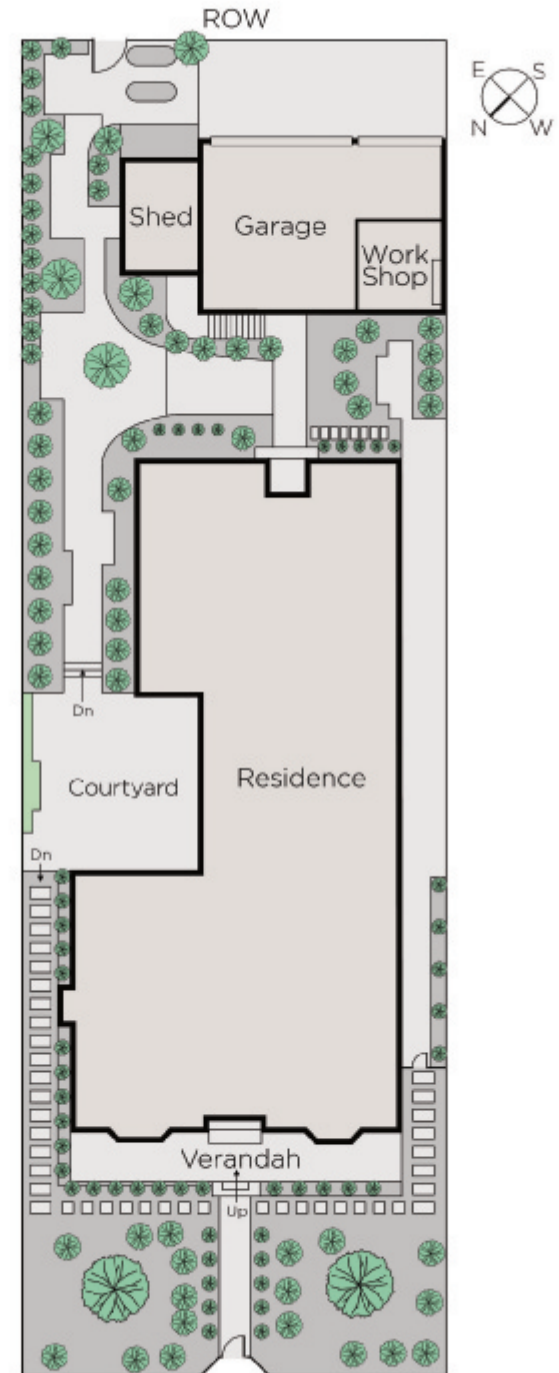
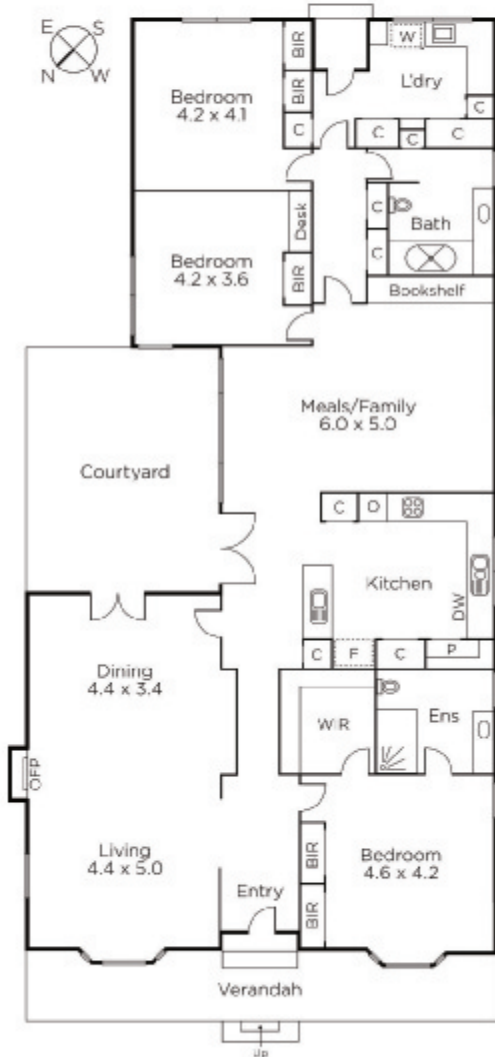
801 Glenferrie Road Hawthorn

marshallwhite.com.au


MARSHALLWHITE



(NOT IN POSITION)



Disclaimer: Information provided is believed to be accurate as at the date of printing, no responsibility is taken for any errors or omissions. It is your responsibility to obtain independent, professional advice. Personal information collected from you is for security purposes and to contact you should the property sell prior to auction. We may use this information to provide you with other real estate services including referrals to authorised financial services' providers. Visit our website at www.marshallwhite.com.au for our privacy policy.