



MARSHALLWHITE

31 John Street
Malvern East





Exemplary Style on the Edge of the Gascoigne

Peacefully nestled at the end of a cul de sac on the fringe of the Gascoigne Estate, the meticulous renovation of this captivating brick period residence has created an irresistibly appealing family domain that impressively marries period elegance with inspired contemporary style. Evocative leadlight windows, high ceilings & timber floors highlight the period elegance in the entrance hall & elegant sitting room with decorative fireplace. Bathed in northern light, the sensational extension comprises a striking gourmet kitchen boasting marble benches & butler's pantry, with exceptionally spacious living & dining areas that open to a landscaped private north-facing garden & studio/home office with kitchenette. The gorgeous main bedroom with decorative fire, walk in robe & en-suite & second double bedroom with built in robe are downstairs while a fabulous children's zone upstairs features two additional large bedrooms with built in robes, a spacious rumpus with north-facing balcony & a stylish bathroom. Convenient to Central Park, schools, Caulfield station, shops, bus & trams, it also includes plantation shutters, video intercom, powder-room, laundry, auto blinds, wine cupboard, carport, off street parking & auto gates.

31johnstreet-malverneast.com

4  2  3 

Auction Saturday 5th May at 2pm

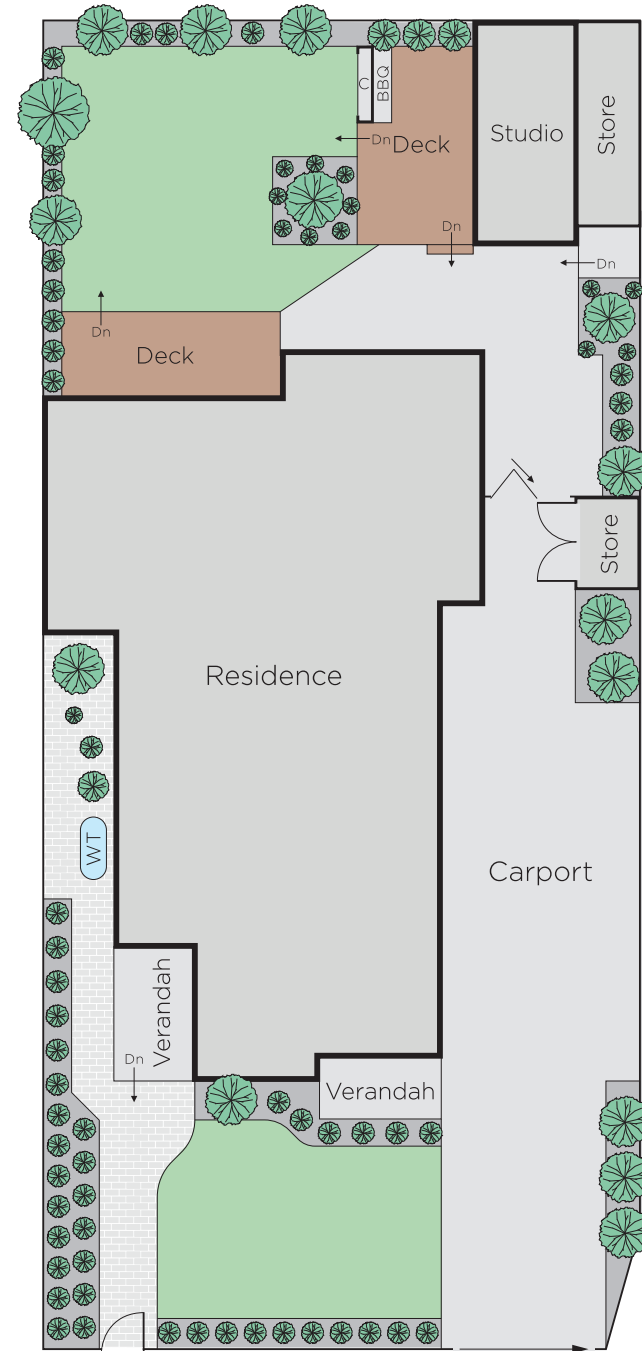
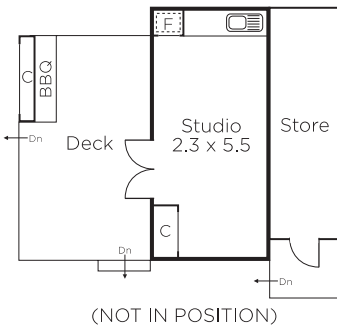
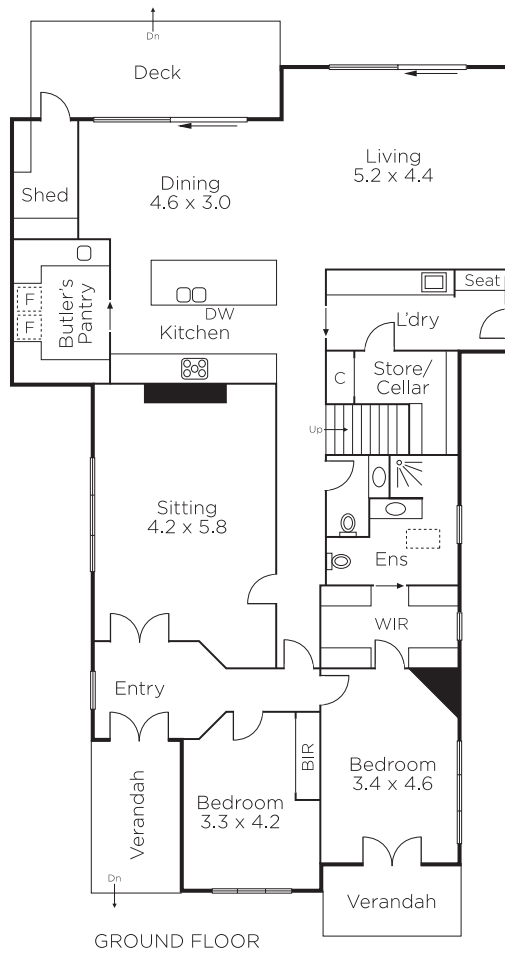
Daniel Wheeler
0411 676 058

Clare Moloney
0401 546 441

Justin Krongold
0403 163 355


MARSHALLWHITE

1111 High Street, Armadale



Disclaimer: Information provided is believed to be accurate as at the date of printing, no responsibility is taken for any errors or omissions. It is your responsibility to obtain independent, professional advice. Personal information collected from you is for security purposes and to contact you should the property sell prior to auction. We may use this information to provide you with other real estate services including referrals to authorised financial services' providers. Visit our website at www.marshallwhite.com.au for our privacy policy.