




MARSHALLWHITE

31 Carson Street
Kew



1157sqm
(approx.)

54.25m

21.34m



Substantial Allotment, Superb Opportunity

Magnificently occupying an outstanding 1157sqm approx. allotment in a prized Studley Park location with no heritage overlay, this five bedroom solid brick period residence has been treasured by the one family for over 50 years and now represents an exciting opportunity to renovate, extend or alternatively to rebuild as a new luxury home (STCA).

Wonderful period character including timber panelling and leadlight windows is featured through the central entrance hall, grand formal dining room with open fireplace and charming sitting or billiards room. Natural light streams through a large study and cosy den, the large well appointed kitchen and adjacent living and dining room opening to the deep private northwest garden with freestanding studio.

Desirably situated close to a range of schools, transport options with both buses and trams to the city, Kew Junction and the Yarra River parkland, it also includes a powder-room, laundry, water tanks, garden shed and double garage.

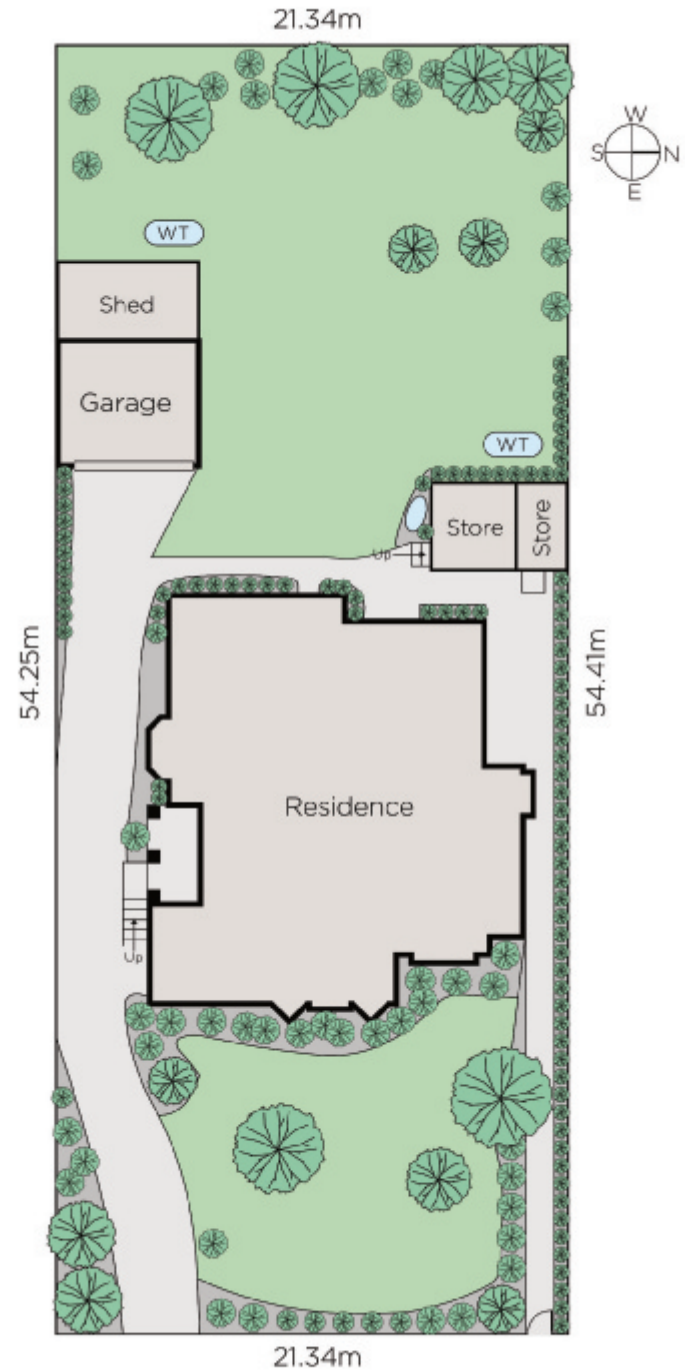
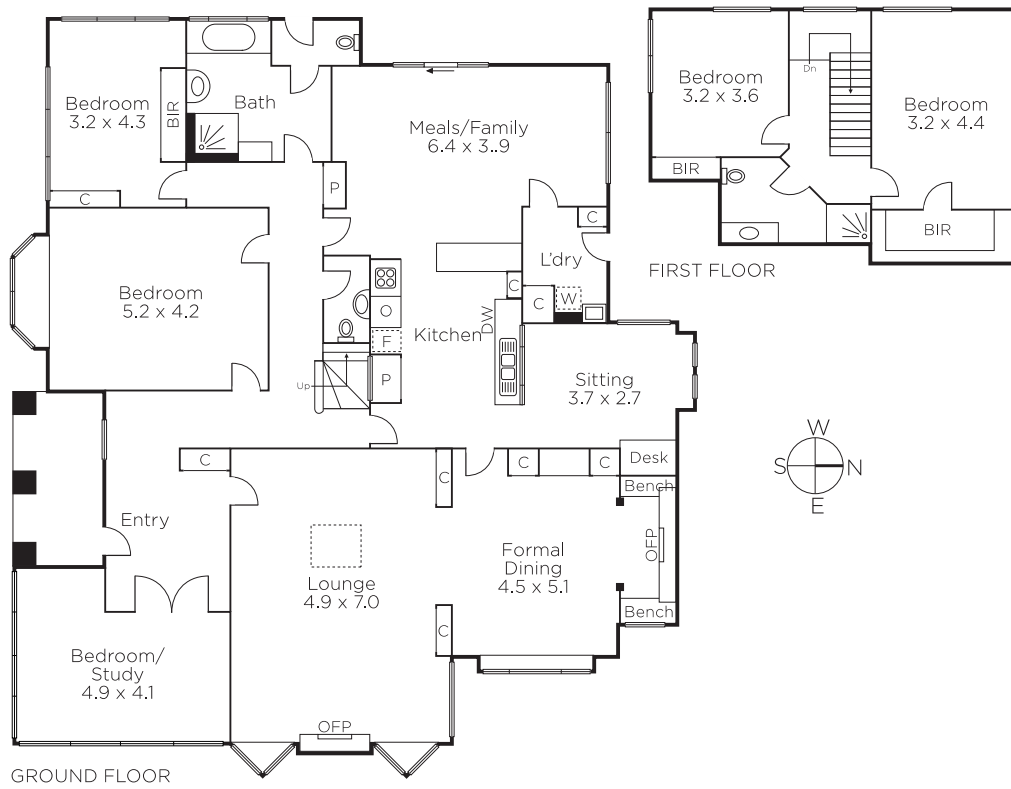
5  3  2 

Auction Saturday 15th September at 12.30pm

Nicholas Franzmann
0412 247 175

Kathy Malcolm
0416 279 966


MARSHALLWHITE
801 Glenferrie Road, Hawthorn



Disclaimer: Information provided is believed to be accurate as at the date of printing, no responsibility is taken for any errors or omissions. It is your responsibility to obtain independent, professional advice. Personal information collected from you is for security purposes and to contact you should the property sell prior to auction. We may use this information to provide you with other real estate services including referrals to authorised financial services' providers. Visit our website at www.marshallwhite.com.au for our privacy policy.