



MARSHALLWHITE

31 Belson Street
Malvern East



Gracious Living in the Gascoigne Estate

Superbly set behind a broad frontage in the Gascoigne Estate near Central Park, trams, schools, shops & restaurants, this elegant c1920's residence's light-filled, single level dimensions provide immediate family appeal with enormous scope to extend & update (STCA). A wide central hall introduces a beautiful sitting/dining room, well-appointed kitchen & sun-drenched living room opening to the picturesque private northwest garden. The generous main bedroom with built in robe is complemented by 2 additional bedrooms, study, bathroom & laundry with 2nd bathroom. Also includes water tank & garage. Land size: 674sqm approx.

31belsonstreet-malverneast.com

3-4 2 2

Auction Saturday 16th December at 12.30pm

James Tomlinson 0408 350 684

Hugh Tomlinson 0409 427 483

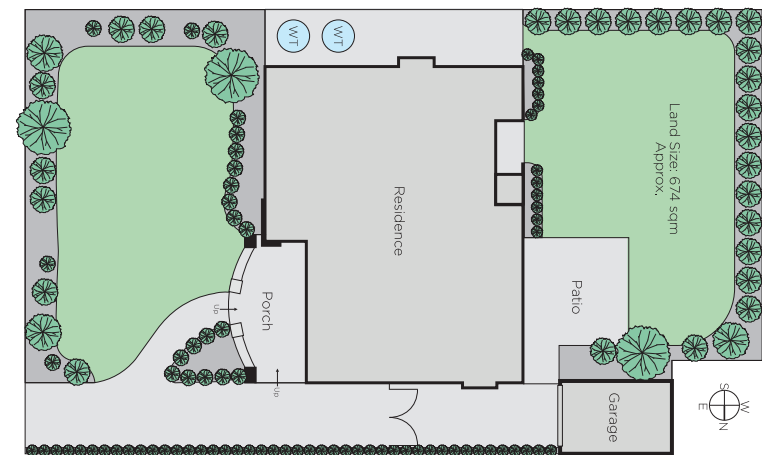
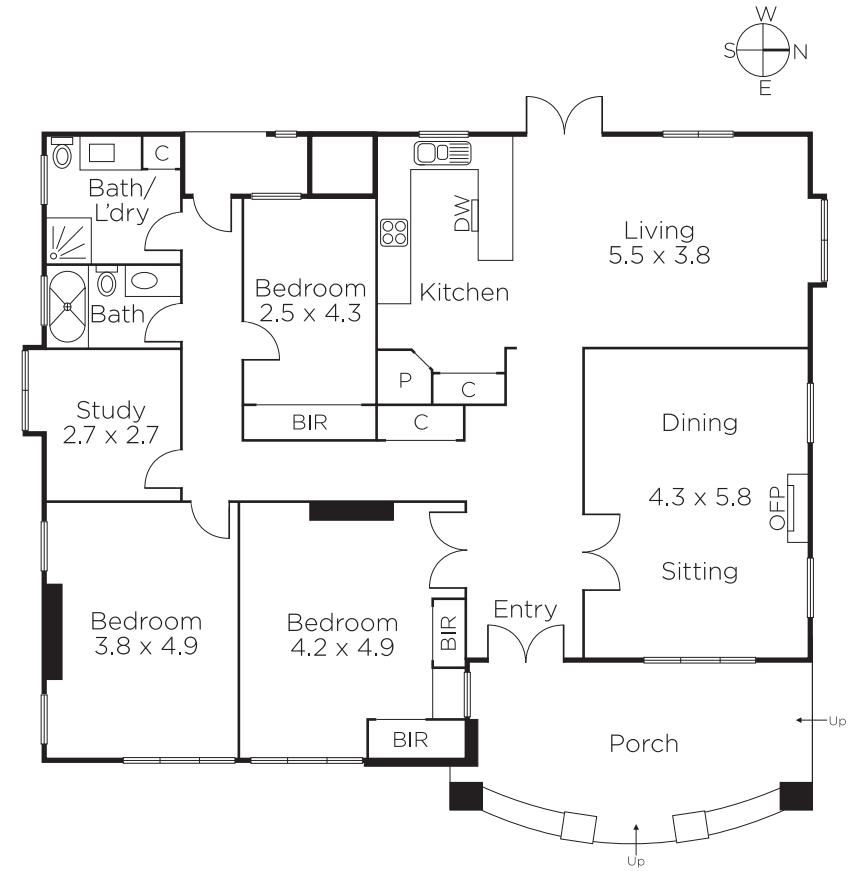
Rae Tomlinson 0418 336 234

1111 High Street Armadale

marshallwhite.com.au



MARSHALLWHITE



Disclaimer: Information provided is believed to be accurate as at the date of printing, no responsibility is taken for any errors or omissions. It is your responsibility to obtain independent, professional advice. Personal information collected from you is for security purposes and to contact you should the property sell prior to auction. We may use this information to provide you with other real estate services including referrals to authorised financial services' providers. Visit our website at www.marshallwhite.com.au for our privacy policy.