




MARSHALLWHITE
ONE
308C/19 Pickles Street
Port Melbourne



History, Luxury and the Beach

This visually striking and spacious two bedroom apartment is part of Sheridan Property's renowned 'Mid Apartments' with huge communal gardens, a 25 metre swimming pool with outdoor entertaining and a gymnasium to complete an enviable lifestyle of bayside indulgence. Immediately impressive, the home's open-plan kitchen/meals/living is vast with attractive concrete floors, premium appliances and an attractive flow through huge glass doors to a broad balcony that overlooks the gardens. Fully secure with video entry, basement parking, bike storage and swipe-access elevator, the home features robes in the bedroom and reverse cycle air conditioning. Combining easy city access with walkability to both the beach and to Bay St, this incredibly diverse position allows you to immerse yourself in terrific local cafes, restaurants and bars, plus Gasworks Park is just around the corner as well.

308c-19picklesstreet-portmelbourne.com 2 🚗 1 🚲 2 🚗

Auction Saturday 19th May at 2.30pm

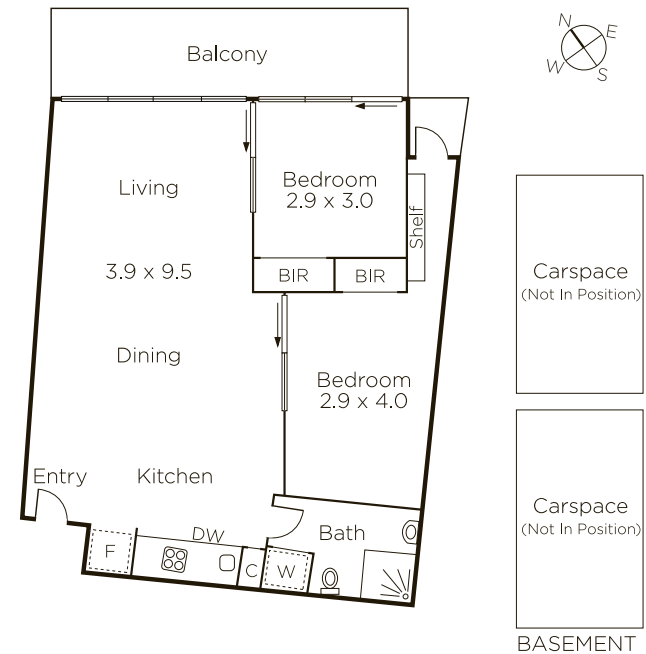
Jaymee Ntentis 0478 724 222

Matthew Grima 0403 438 601

Bradley Steinbach 0403 539 038

101 Dundas Place Albert Park

9822 9999 mwone.com.au



Disclaimer: Information provided is believed to be accurate as at the date of printing, no responsibility is taken for any errors or omissions. It is your responsibility to obtain independent, professional advice. Personal information collected from you is for security purposes to contact you should the property sell prior to auction. We may use this information to provide you with other real estate services including referrals to authorized financial services providers. Visit our website at www.mwone.com.au for our privacy policy.