



  
MARSHALLWHITE  
ONE

308/6 Lisson Grove  
Hawthorn



## Stunning City Views with Designer Excellence

As it frames spectacular views of the city skyline, from the third floor of the renowned 'Cumulus' building, this highly sophisticated two bedroom apartment is a stunning home that is incredibly easy to live in.

As it opens to a large balcony all with the city as its backdrop, the open-plan living is geared for entertaining and reveals Miele kitchen appliances, stone benches - including an island bench - and mirror splash backs. Set within beautifully landscaped gardens, with secure intercom entry and basement parking, the home also features robes in each bedroom, a semi-ensuite bathroom, laundry and reverse cycle air conditioning. Enticingly positioned for easy city access, this authentically urban location is just metres from city-bound transport, convenient to Bridge Rd, Swan St and Glenferrie Rd and within comfortable walking distance of beautiful Yarra parkland and trails.

308-6lissongrove-hawthorn.com

2 1 1

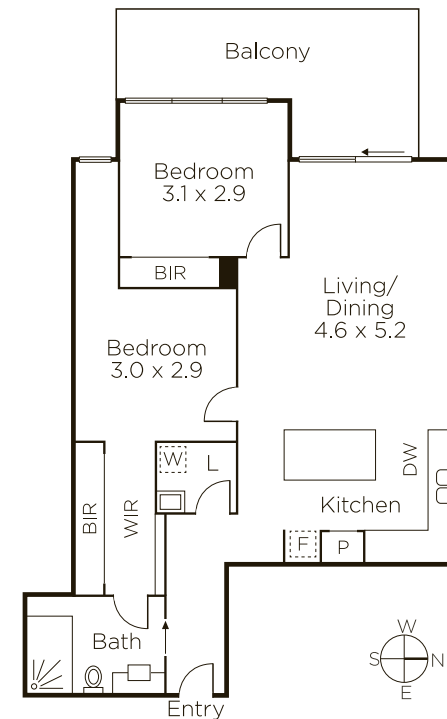
Auction Saturday 12th May at 11.30am

James Hill 0402 421 154

Bethany Wilkinson 0449 285 813

801 Glenferrie Road Hawthorn

9822 9999 mwone.com.au



MARSHALLWHITE  
ONE

Disclaimer: Information provided is believed to be accurate as at the date of printing, no responsibility is taken for any errors or omissions. It is your responsibility to obtain independent, professional advice. Personal information collected from you is for security purposes to contact you should the property sell prior to auction. We may use this information to provide you with other real estate services including referrals to authorized financial services providers. Visit our website at [www.mwone.com.au](http://www.mwone.com.au) for our privacy policy.