




MARSHALLWHITE

305/33 Wattle Road
Hawthorn





A Stunning and Secure Lifestyle Apartment

This luxuriously appointed apartment designed by Ascui Edwards Architects and built by the Hickory Construction Group, is conveniently situated within walking distance of Fairview Park and Yarra River walking and cycling tracks, moments from the local primary school and private schools, close to Glenferrie shopping and public transport options, Swinburne University and easy CBD/CityLink access - further reinforcing its inner city appeal and investment potential. Offering a private and secure lifestyle it delivers a perfect investment or downsizing opportunity with spacious single-level living plus lift access and a preferred northern aspect delivering abundant natural light to the living areas. The interior features a tiled entrance flowing to three bedrooms, main with ensuite opens to a wide balcony. Plus a family bathroom and generous living incorporating a sleek CaesarStone kitchen boasting prestige Miele appliances and WIP flowing to a sundrenched balcony overlooking lush central gardens. Other features include security entry with video intercom, high quality fixtures and fittings, fully-tiled bathrooms, basement storage cage with car parking for two.

305-33wattleroad-hawthorn.com

3  2  2 

Auction Saturday 11th November at 10am

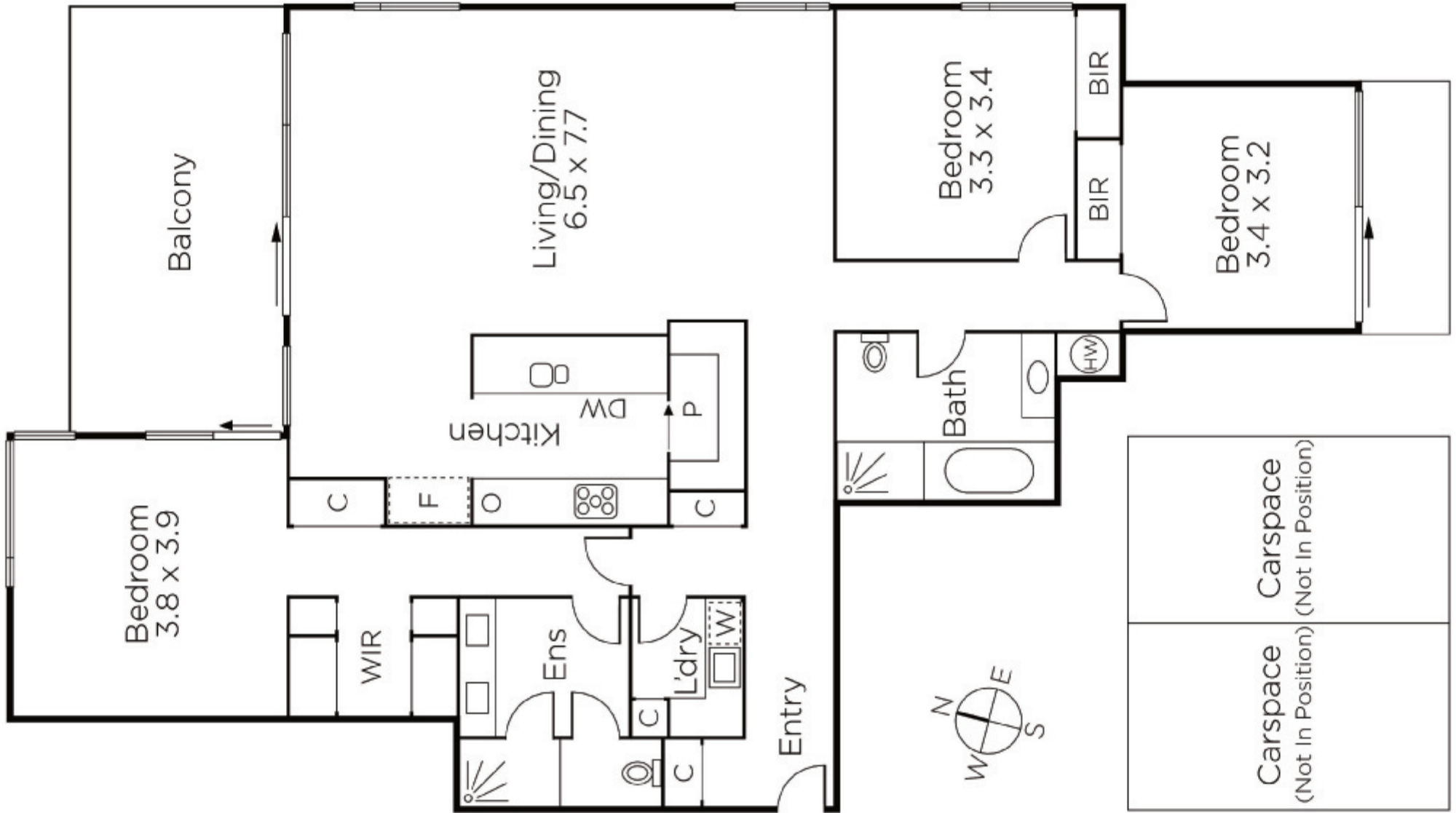
Mark Sutherland 0418 691 585

Antony Woodley 0421 286 741

801 Glenferrie Road Hawthorn

marshallwhite.com.au


MARSHALLWHITE



Disclaimer: Information provided is believed to be accurate as at the date of printing, no responsibility is taken for any errors or omissions. It is your responsibility to obtain independent, professional advice. Personal information collected from you is for security purposes and to contact you should the property sell prior to auction. We may use this information to provide you with other real estate services including referrals to authorised financial services' providers. Visit our website at www.marshallwhite.com.au for our privacy policy.