




MARSHALLWHITE
ONE

302/36 Bonview Road
Malvern



Bold and Expressive with a Northern Panorama

As it flows to a spectacular north-facing balcony with a captivating eastern suburban panorama, this meticulous, single bedroom apartment is larger than most and clearly differentiated from others with a commitment to quality that also defies cliché. Dark stone kitchen benches combine with charcoal soft close cabinetry, stainless steel Miele appliances and moody dark glass splash backs to create a dramatic open-plan backdrop for the home's broad, north-facing balcony, whilst the bathroom is crisp and white with a European laundry. Also features built-in robes, split system heating and cooling, as well as secure video entry, basement parking, storage and elevator access. This exclusive and leafy, urban setting allows you to wander easily to Malvern Village, shops, cafes, to the natural sanctuary of Malvern Gardens, to trams along Malvern Rd and to the prospect of ridiculously easy city-commuting via Tooronga Railway Station.

302-36bonviewroad-malvern.com

1 1 1

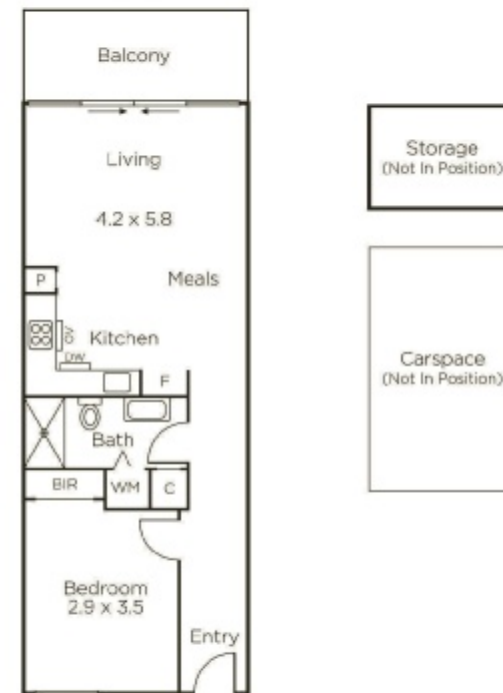
Auction Saturday 14th December at 12.30pm

Tom Hayne 0429 149 070

1111 High Street Armadale

Joseph Ben-Danan 0408 135 948

9822 9999 mwone.com.au




MARSHALLWHITE
ONE

Disclaimer: Information provided is believed to be accurate as at the date of printing, no responsibility is taken for any errors or omissions. It is your responsibility to obtain independent, professional advice. Personal information collected from you is for security purposes to contact you should the property sell prior to auction. We may use this information to provide you with other real estate services including referrals to authorized financial services providers. Visit our website at www.mwone.com.au for our privacy policy.