



TRAVEL HOUSE


MARSHALLWHITE

301/196 Albert Road
South Melbourne



"Silverpoint" - Opposite the Lake

Commanding spectacular views over Albert Park Lake, the effortlessly stylish and generously proportioned dimensions of this stunning boutique apartment delivers unbeatable bayside living.

Lavishly finished with Italian marble floors, the gourmet granite kitchen and spacious living/dining area open to a full width balcony overlooking the lake. The main bedroom with designer en-suite/BIR is matched by a second fitted bedroom, chic bathroom and study/3rd bedroom.

Includes panel heating, RC/air-con, security intercom, dual lift access, Euro-laundry, storage cage and 2 car spaces.

301-196albertroad-southmelbourne.com

3 2 2

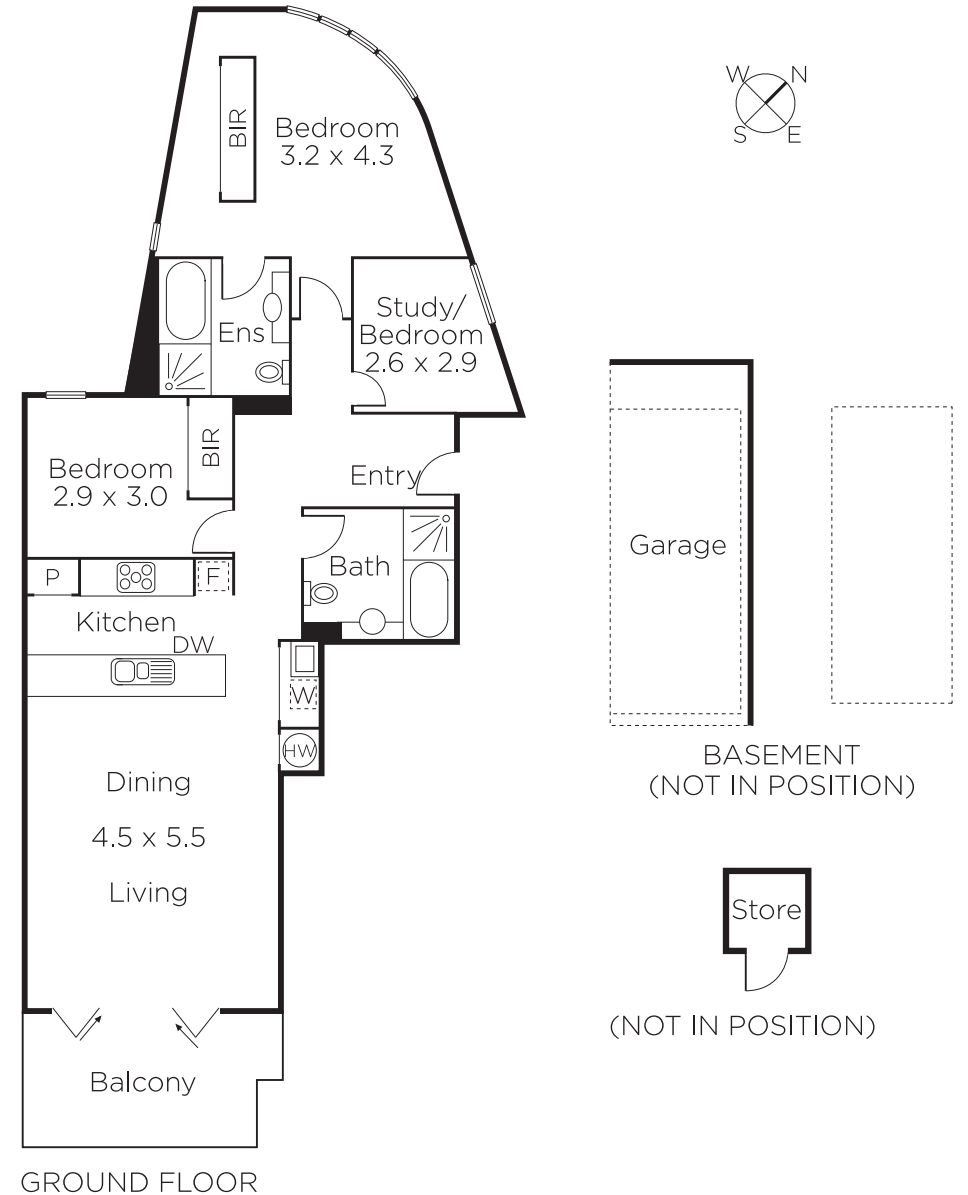
Auction Saturday 18th November at 11.30am

Justin Holod 0411 669 161

Nicholas Hoo 0435 728 272

101 Dundas Place Albert Park
marshallwhite.com.au


MARSHALLWHITE



Disclaimer: Information provided is believed to be accurate as at the date of printing, no responsibility is taken for any errors or omissions. It is your responsibility to obtain independent, professional advice. Personal information collected from you is for security purposes and to contact you should the property sell prior to auction. We may use this information to provide you with other real estate services including referrals to authorised financial services' providers. Visit our website at www.marshallwhite.com.au for our privacy policy.