



30



  
MARSHALLWHITE

30 Omama Road  
Murrumbena





## "Baile"

Every conceivable luxury has been meticulously considered in this impressive family abode. Catering to families who appreciate exceptional quality, this is a place to call home for many years to come. Magnificently situated adjacent to & opposite parkland, it offers close proximity to schools, Murrumbena station & cafes & Chadstone. Double door entry reveals timber floors, ornate ceilings & leadlight windows in the wide hallway, elegant sitting room with open fire & formal dining room with a gas fire. Vaulted ceilings add a wonderful sense of scale to the generous living/dining room with gas log-fire, study nook & state of the art Miele kitchen with butler's pantry. Full height sliding doors open to a sensational covered al fresco entertaining precinct with BBQ kitchen & open fire overlooking the heated pool & northeast private garden with gate to the park. The main bedroom is lavishly appointed with a designer en-suite & dressing room. A fabulous children's wing comprises four double bedrooms (BIRS), stylish bathroom & spacious media/theatre room. Comprehensively appointed with security system, heating/cooling, powder-room, mud-room, laundry & internally accessed double garage. Land size: 1,150sqm approx.

[30omamaroad-murrumbena.com](http://30omamaroad-murrumbena.com)

5  2.5  2 

Auction Saturday 21st October at 11.30am

Daniel Wheeler 0411 676 058

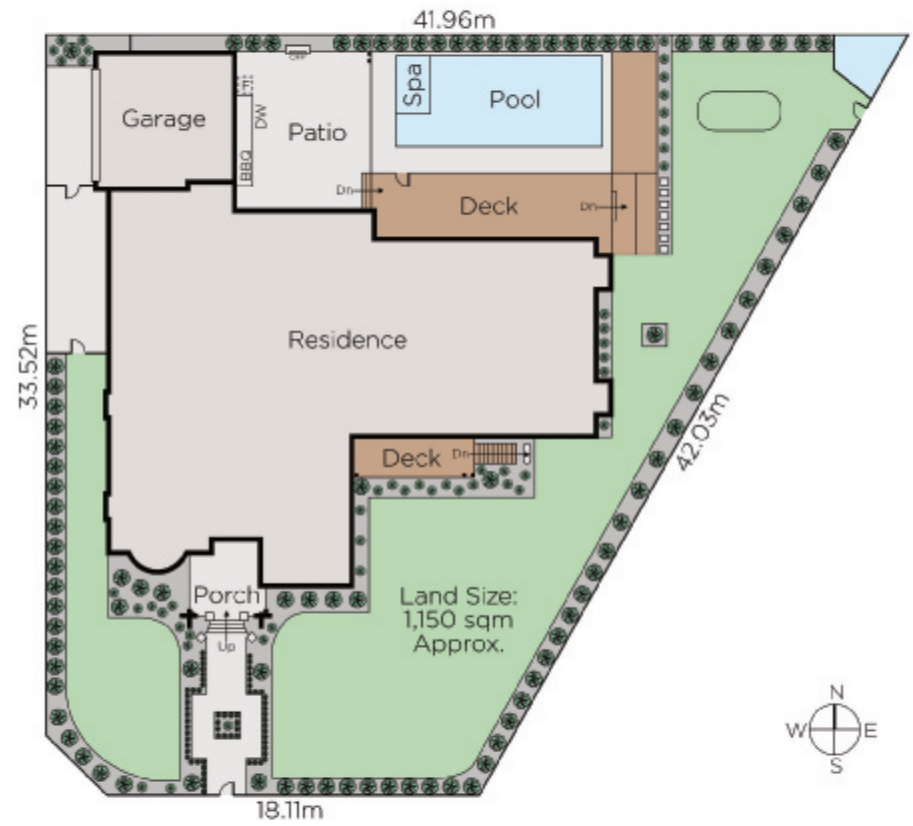
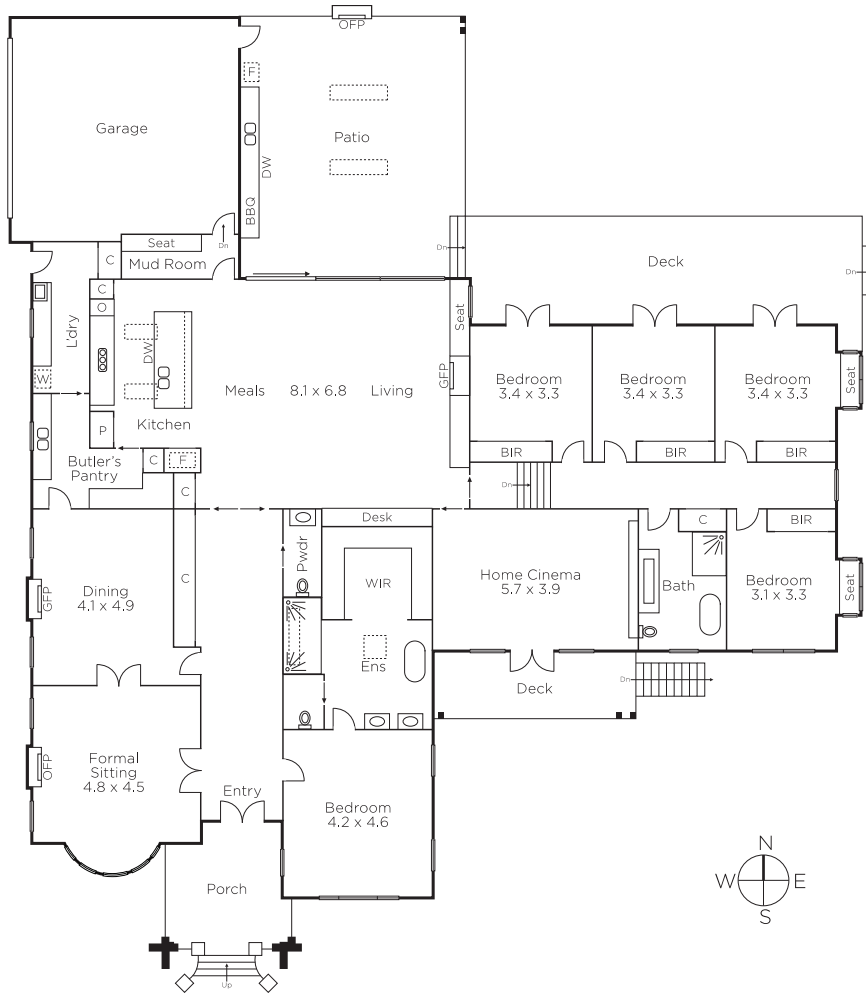
Clare Moloney 0401 546 441

Jason Brinkworth 0416 006 282

1111 High Street Armadale

[marshallwhite.com.au](http://marshallwhite.com.au)

  
MARSHALLWHITE



Disclaimer: Information provided is believed to be accurate as at the date of printing, no responsibility is taken for any errors or omissions. It is your responsibility to obtain independent, professional advice. Personal information collected from you is for security purposes and to contact you should the property sell prior to auction. We may use this information to provide you with other real estate services including referrals to authorised financial services' providers. Visit our website at [www.marshallwhite.com.au](http://www.marshallwhite.com.au) for our privacy policy.