




MARSHALLWHITE

3 Wiringa Avenue
Camberwell





Designer Style Inside and Out

Iconic Fasham Johnson design has been brilliantly reimagined with spectacular flair throughout this sensational contemporary 4/5 bedroom domain. This stunning residence is beautifully set within glorious Rick Eckersley designed north-facing garden and pool surrounds. Designed to maximize garden outlooks and natural light flow, soaring vaulted ceilings accentuate the sense of space in the exceptionally well proportioned sitting/dining room warmed by a gas fireplace. Spotted Gum floors flow through the wide hall to an equally generous living/dining room with a premium entertainer's kitchen. Enjoying wonderful leafy views, the living areas extend out to the picturesque deep private landscaped north-facing garden with BBQ, stone terraces and solar heated pool. A magnificent downstairs main bedroom with lavish marble en-suite and walk in robe and a study are matched upstairs by three bright double bedrooms with built in robes and a marble bathroom with freestanding bath. Includes gas ducted heating/refrigerated cooling, video intercom, remote blinds, powder-room, laundry, irrigation, 20,000ltr water tank and 2xgarage. Land size: 768sqm approx.

3wiringaavenue-camberwell.com

5  2.5  2 

Auction Saturday 23rd September at 1.30pm

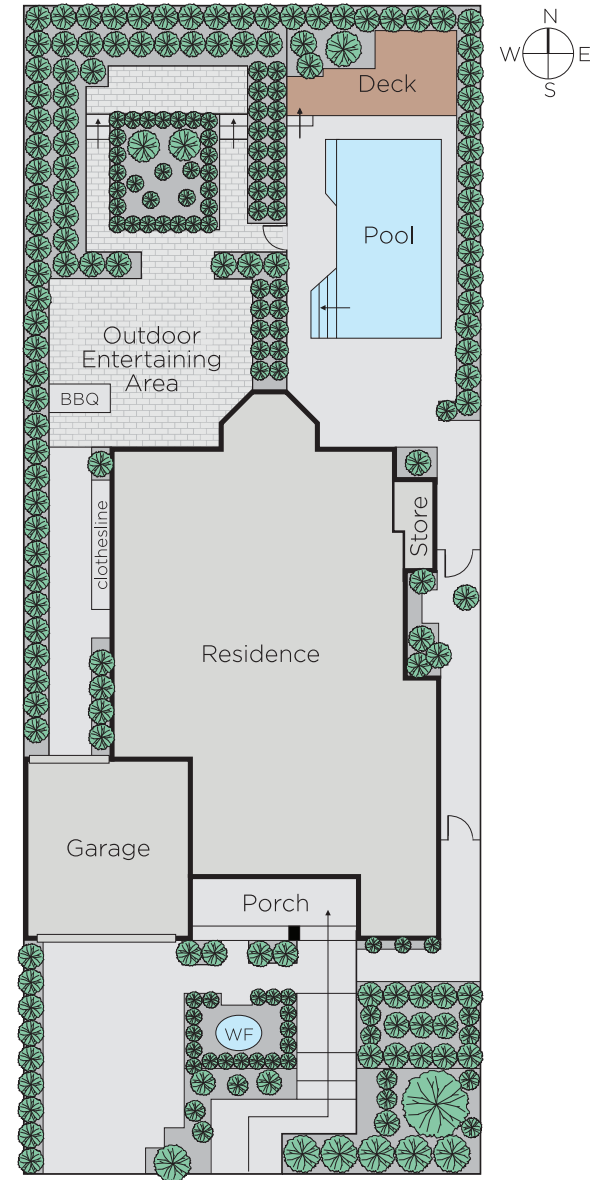
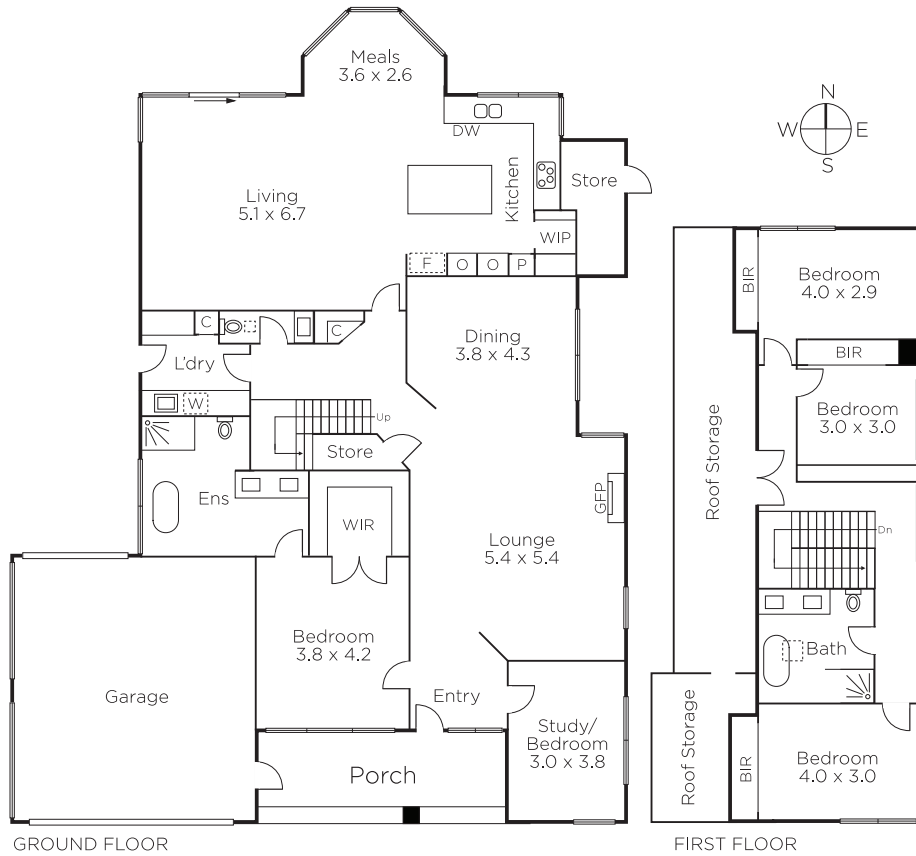
Désirée Wakim 0412 336 266

Hamish Tostevin 0408 004 766

801 Glenferrie Road Hawthorn

marshallwhite.com.au


MARSHALLWHITE



Disclaimer: Information provided is believed to be accurate as at the date of printing, no responsibility is taken for any errors or omissions. It is your responsibility to obtain independent, professional advice. Personal information collected from you is for security purposes and to contact you should the property sell prior to auction. We may use this information to provide you with other real estate services including referrals to authorised financial services' providers. Visit our website at www.marshallwhite.com.au for our privacy policy.