



  
MARSHALLWHITE

3 Wiltshire Drive  
Kew





## Stunning Willsmere Residence with City Views

Exclusively situated in the historic Willsmere Building in one of Melbourne's most picturesque locations - this stunning apartment with panoramic City views will exceed all expectations with its light-filled multi-level living areas. Superb renovations preserving period attributes whilst delivering stylish living spaces with a sitting room, sleek granite/Euro kitchen & dining, informal living/study, 3 bedrooms, main with pristine ensuite, 2nd bedroom offers breathtaking city views & third bedroom with a magnificent, rare Mansard roof and beams. Incls. security intercom, hydronic heating, d/cooling, OFPs, 2-car spaces.

[3wiltshiredrive-kew.com](http://3wiltshiredrive-kew.com)

3 2.5 3

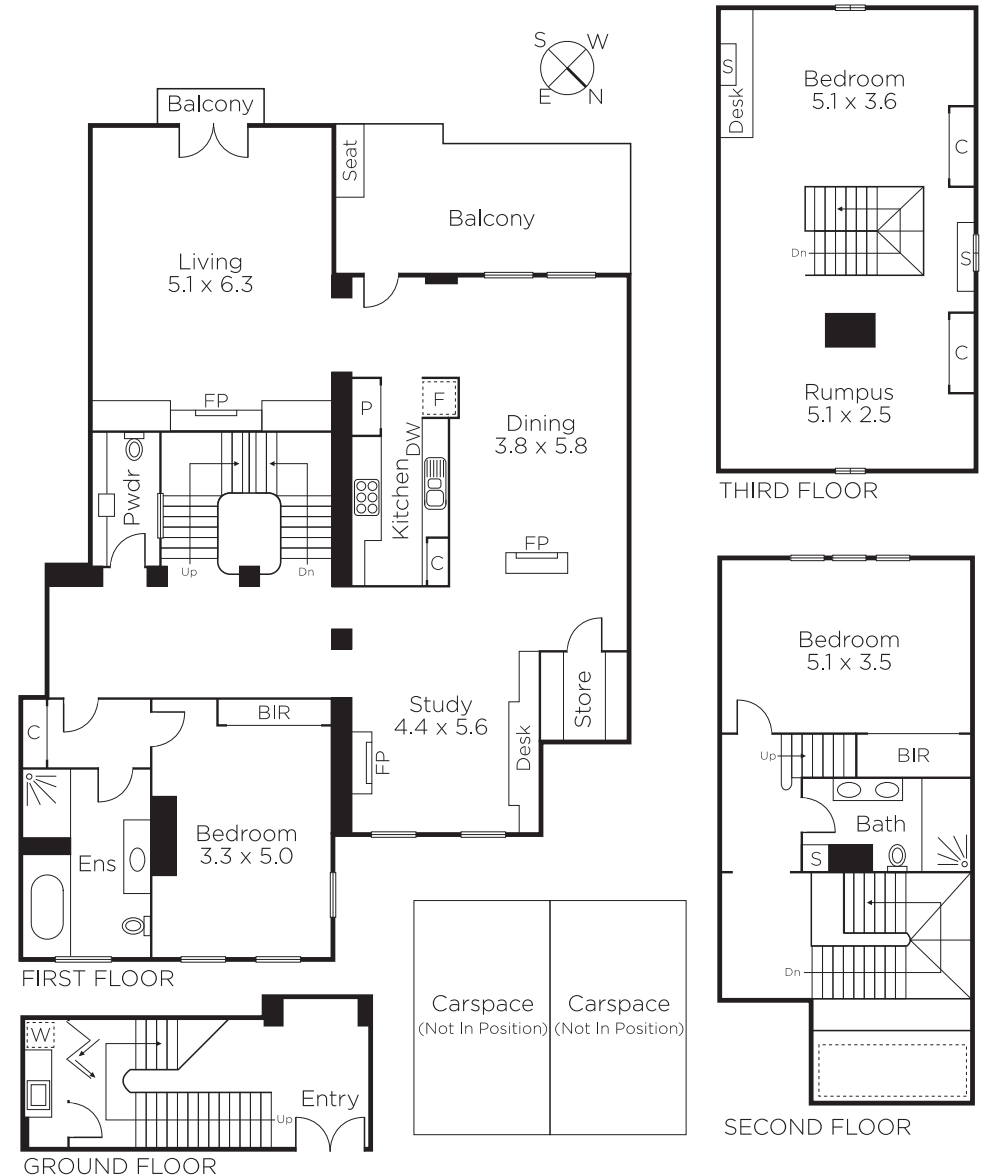
Expressions of Interest Close Wednesday 6th June at 5pm

**Davide Lettieri**  
0414 018 707

**Hamish Tostevin**  
0408 004 766

  
**MARSHALLWHITE**

801 Glenferrie Road, Hawthorn



Disclaimer: Information provided is believed to be accurate as at the date of printing, no responsibility is taken for any errors or omissions. It is your responsibility to obtain independent, professional advice. Personal information collected from you is for security purposes and to contact you should the property sell prior to auction. We may use this information to provide you with other real estate services including referrals to authorised financial services providers. Visit our website at [www.marshallwhite.com.au](http://www.marshallwhite.com.au) for our privacy policy.