




MARSHALLWHITE

3 Wilson Street
South Melbourne



Style Central

The "warehouse" inspired design of this sensational contemporary residence has created a stylish, ideally located and sun-drenched inner bayside domain near Clarendon St shops and restaurants, the market, Albert Park Lake and trams to the city. Bathed in natural light and featuring limed timber floors, the generous living/dining areas with a stylish kitchen opens to a private north balcony. The main bedroom on its own level above, features built in robe and sleek bathroom. The second bedroom and bright bathroom opens to a north courtyard. Includes alarm, video intercom, air conditioning and internally accessed garage.

3wilsonstreet-southmelbourne.com

2 2 1

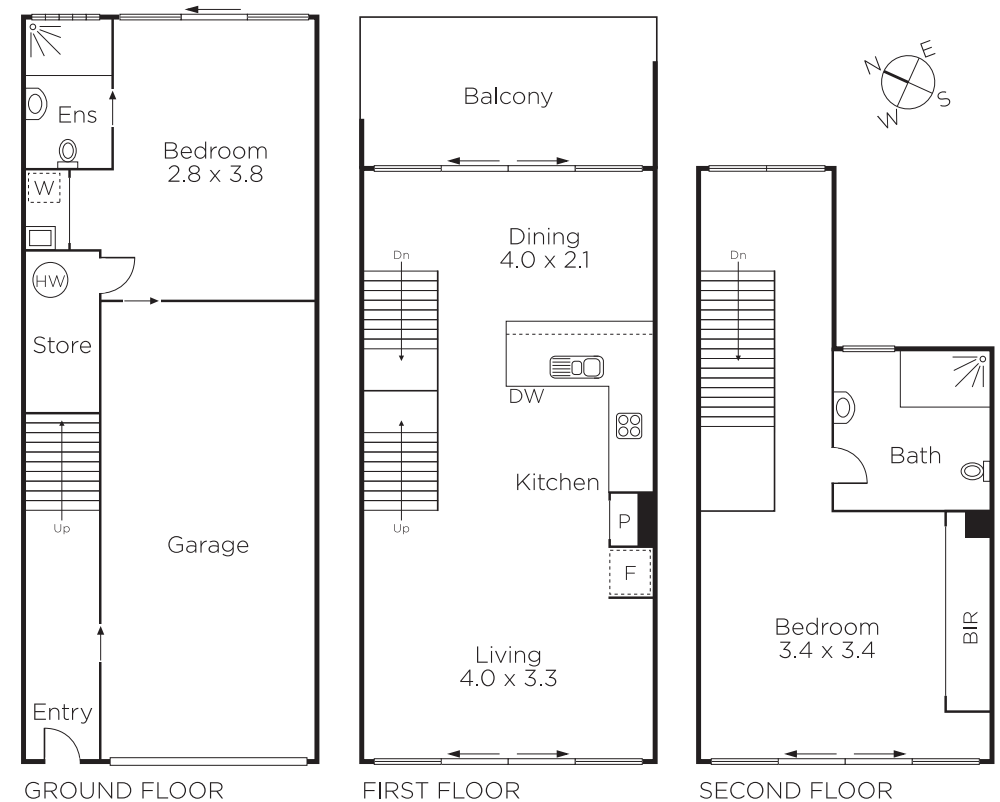
Auction Saturday 14th April at 11.30am

Scott O'Halloran
0413 464 473

Damian O'Sullivan
0418 566 916


MARSHALLWHITE

101 Dundas Place, Albert Park



Disclaimer: Information provided is believed to be accurate as at the date of printing, no responsibility is taken for any errors or omissions. It is your responsibility to obtain independent, professional advice. Personal information collected from you is for security purposes and to contact you should the property sell prior to auction. We may use this information to provide you with other real estate services including referrals to authorised financial services providers. Visit our website at www.marshallwhite.com.au for our privacy policy.