



MARSHALLWHITE


3 West Court
Camberwell





Classic Four-Bedroom Family Haven

Nestled at the rear of a quiet court, this enchanting residence features flexible four-bedroom accommodation in a setting perfect for modern family living and year-round entertaining. In a family-oriented locale, with Cooper Reserve and Wattle Park within a moment's reach, this light-filled abode features open-plan sitting with fireplace, dining and Caesarstone kitchen surrounded by huge windows embracing the connection with outside. Polished wood floors create flow throughout and the expansive main bedroom suite comprises walk-in robes, ensuite and a parents' retreat/study, accompanied by two further ground floor bedrooms. Suitable for a ranges of uses, the fourth bedroom or children's retreat is on the lower ground floor, opens to the garden and includes practical Euro laundry. Attractive leafy outlooks from every window complement all rooms and plenty of parking, a double carport, shed and cellar storage complete this sensational family home in easy reach of Wattle Park Primary, Presbyterian Ladies College, Riversdale Road tram and Through Road cafes. Land size: 688sqm approx.

4  2  2 

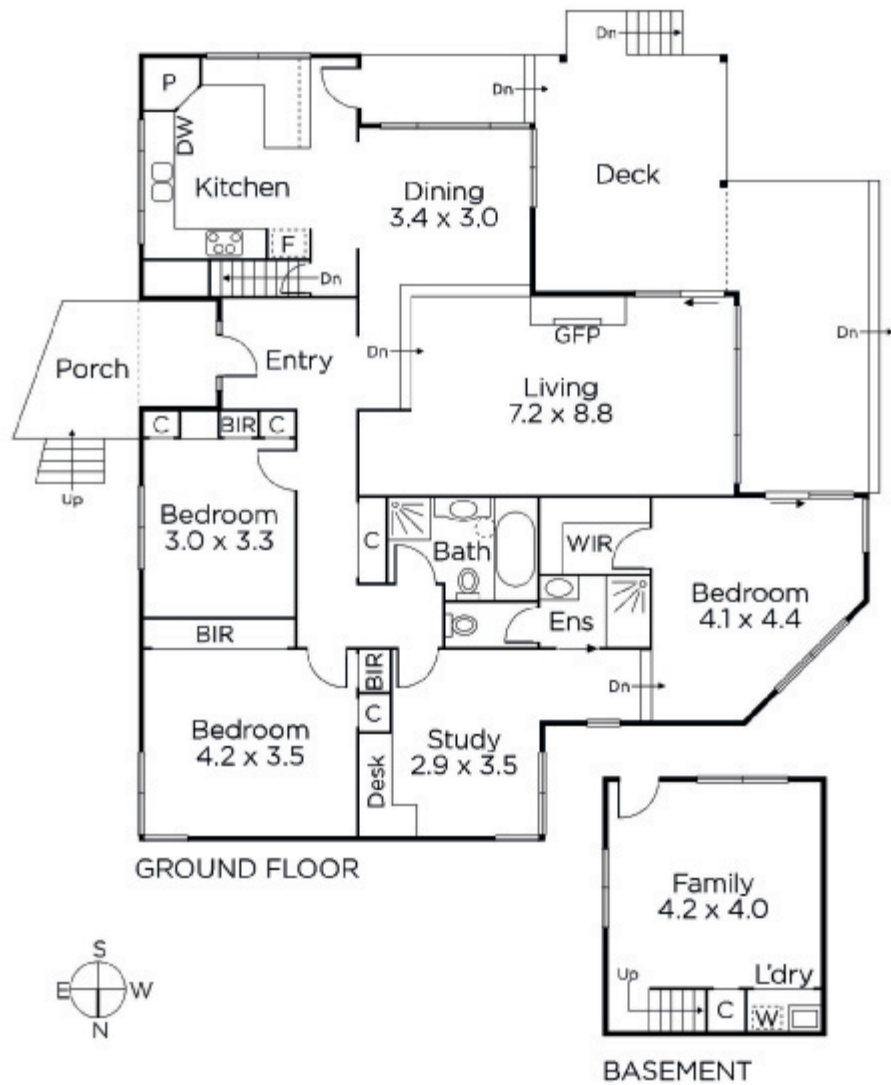
Auction Saturday 8th December at 2.30pm

Daniel Williams
0402 182 704

Grayson Rayner
0433 654 744

Luke Saville
0437 720 806


MARSHALLWHITE
801 Glenferrie Road, Hawthorn



Disclaimer: Information provided is believed to be accurate as at the date of printing, no responsibility is taken for any errors or omissions. It is your responsibility to obtain independent, professional advice. Personal information collected from you is for security purposes and to contact you should the property sell prior to auction. We may use this information to provide you with other real estate services including referrals to authorised financial services' providers. Visit our website at www.marshallwhite.com.au for our privacy policy.