



  
MARSHALLWHITE

3 Steele Avenue  
St Kilda





## 1880's Victorian - Sublimely Transformed

A sanctuary of sublime style, this traditional block fronted Victorian retains all the appeal of the era while remaining focused on a vibrant contemporary future - transformed by a thoughtful renovation and light-filled extension. Oak floorboards and high ceilings frame an elegant hallway that leads past two inviting bedrooms to arrive at a living/dining domain defined by bright natural light, perfect privacy and seamless transition to a landscaped courtyard. Marble tiling and Bosch appliances complement an open plan kitchen while a custom American Oak vanity and under floor heating enhance the central bathroom.

3steeleavenue-stkilda.com

2 1

Auction Saturday 8th April at 10.30am

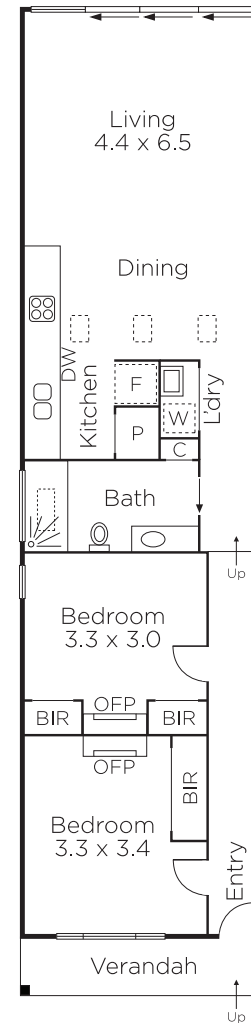
Sam Hobbs 0404 164 444

Daniel McGuire 0411 514 103

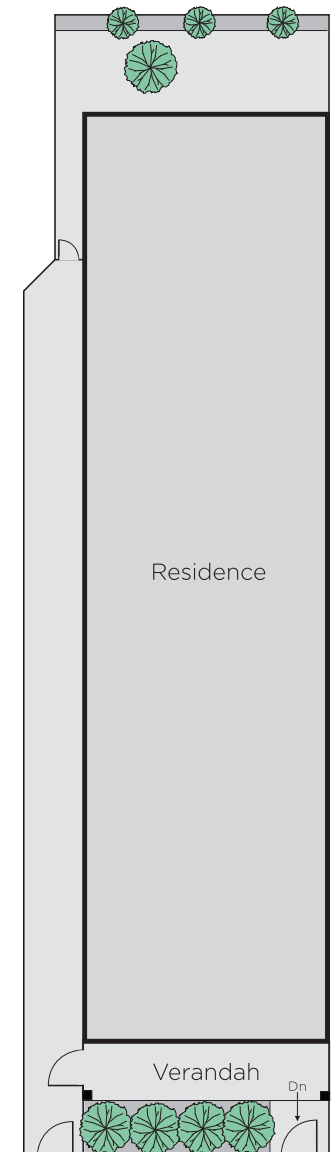
Michael Paproth 0488 300 800

101 Dundas Place Albert Park  
marshallwhite.com.au

  
MARSHALLWHITE



Store  
(NOT IN POSITION)



Disclaimer: Information provided is believed to be accurate as at the date of printing, no responsibility is taken for any errors or omissions. It is your responsibility to obtain independent, professional advice. Personal information collected from you is for security purposes and to contact you should the property sell prior to auction. We may use this information to provide you with other real estate services including referrals to authorised financial services' providers. Visit our website at [www.marshallwhite.com.au](http://www.marshallwhite.com.au) for our privacy policy.