




MARSHALLWHITE

3 Snowden Place
Canterbury





Stunning Golden Mile Family Residence

Situated within the prized Golden Mile precinct, this impressive contemporary split-level family residence is perfectly located within an exclusive cul-de-sac off Monomeath Avenue, one of Canterbury's finest and most highly regarded streets. Set privately behind a high front fence within a lush garden setting, the stunning home offers a light filled, flowing floor-plan and garden vistas to the living areas. Presented in perfect order throughout the home includes generous formal lounge and dining room leading to expansive open plan family/meals area with superb Sandstone OFP, well appointed Euro kitchen, adjacent laundry and bathroom. Floor-to-ceiling windows overlook a vine-clad pergola, terracotta terrace and heated pool with spa - perfect for summer relaxation and entertaining. Complemented by four bedrooms over two levels (main with ensuite), study/office, family bathroom and above garage retreat. With powder room, intercom entry, ducted heating and vacuum, R/C air conditioners, remote double garage plus additional gated off-street parking. Land: 1,220sqm approx.

3snowdenplace-canterbury.com

4  3  2 

Auction Saturday 11th November at 2pm

Robert Ding 0418 858 393

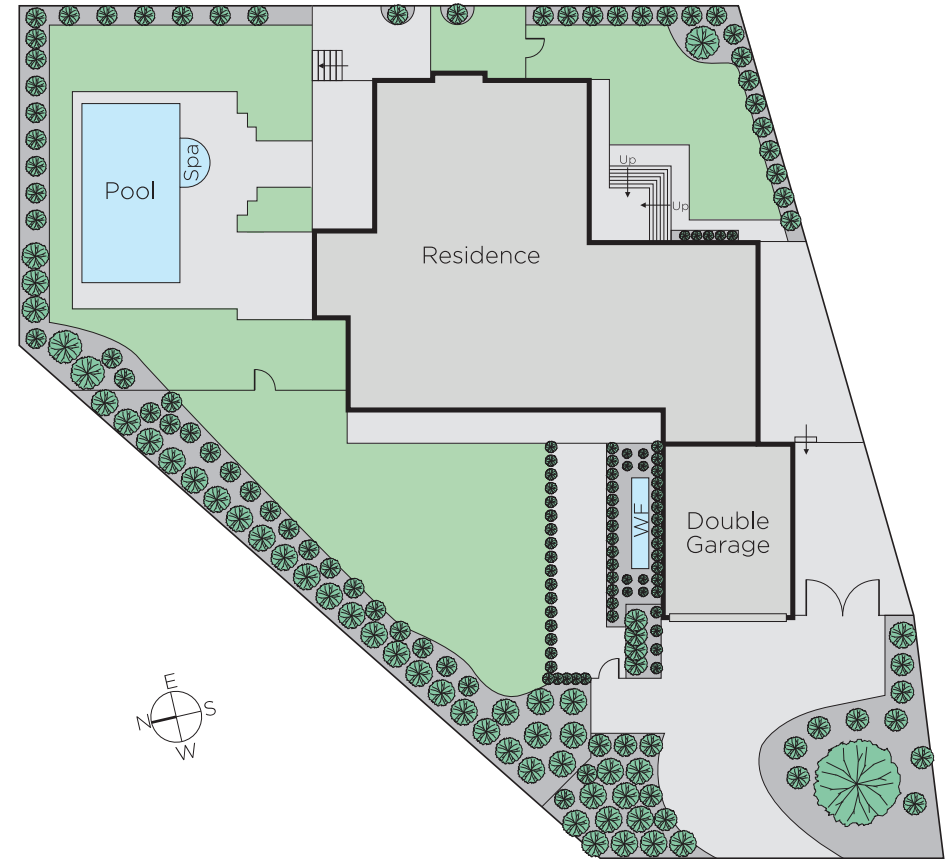
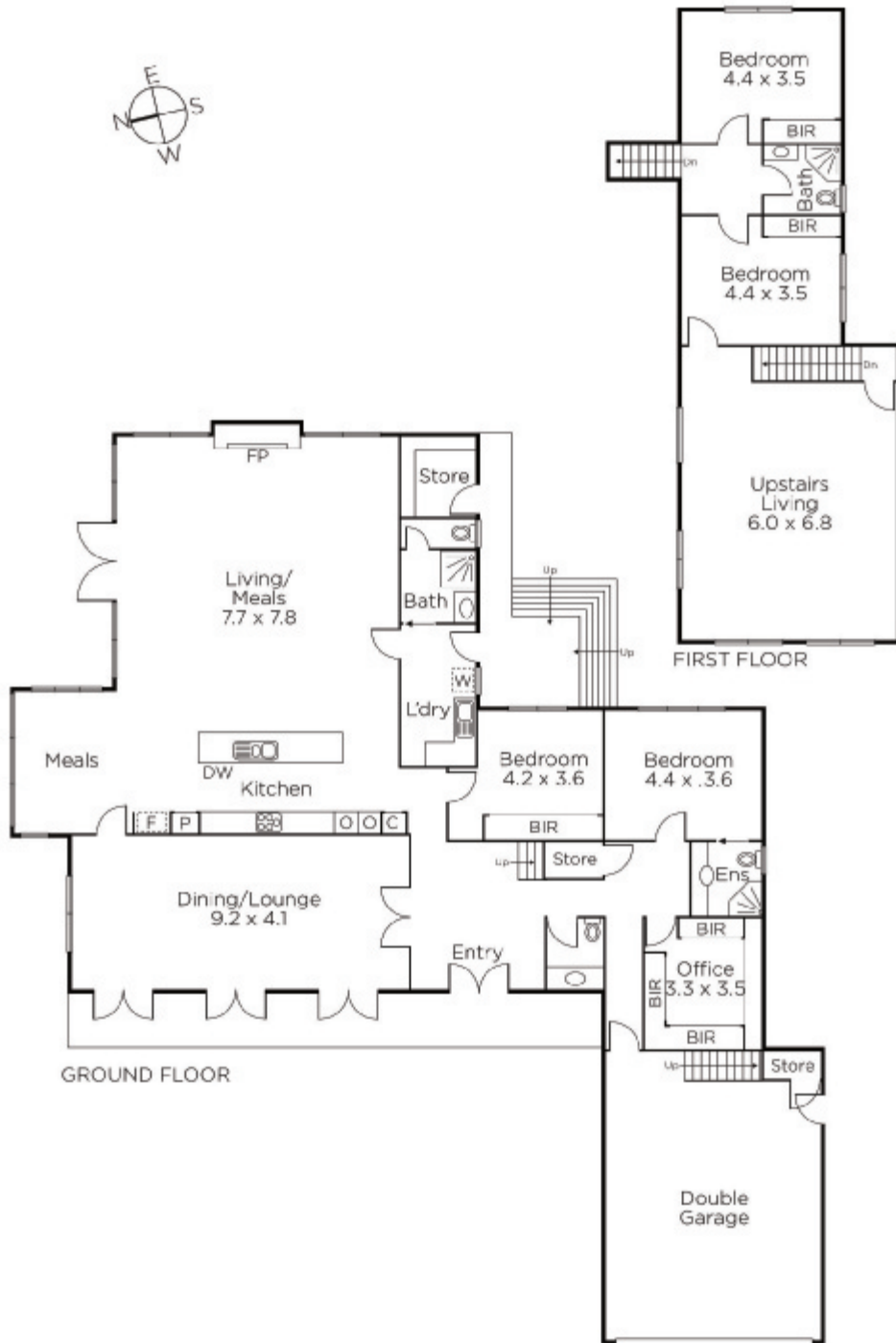
James Tostevin 0417 003 333

Sally O'Connell 0413 474 474

801 Glenferrie Road Hawthorn

marshallwhite.com.au


MARSHALLWHITE



Disclaimer: Information provided is believed to be accurate as at the date of printing, no responsibility is taken for any errors or omissions. It is your responsibility to obtain independent, professional advice. Personal information collected from you is for security purposes and to contact you should the property sell prior to auction. We may use this information to provide you with other real estate services including referrals to authorised financial services' providers. Visit our website at www.marshallwhite.com.au for our privacy policy.