



MARSHALLWHITE

3 Glendora Avenue
Brighton



Period Brighton Charm

Bring your vision to this charming Edwardian classic in Brighton, ideally located near Elsternwick Park and Elwood Shopping Precinct. Presenting with three well sized bedrooms, three living areas comprising a formal dining room and family room in addition to the light filled living zone flowing onto the rear landscaped gardens. Prime for renovation retaining the original features of a Baltic pine floor, open fireplace and ceiling roses. If you are wanting everything Bayside has to offer you cant go past this Brighton Charmer.

3 1

Auction Saturday 24th November at 10.30am

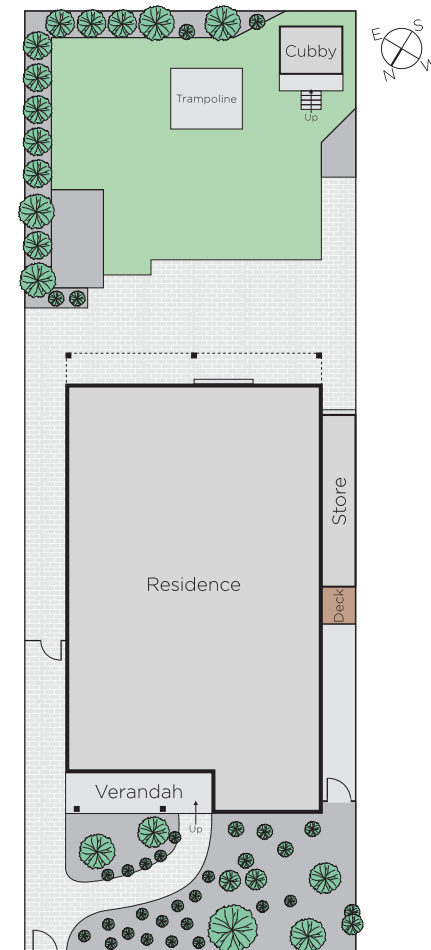
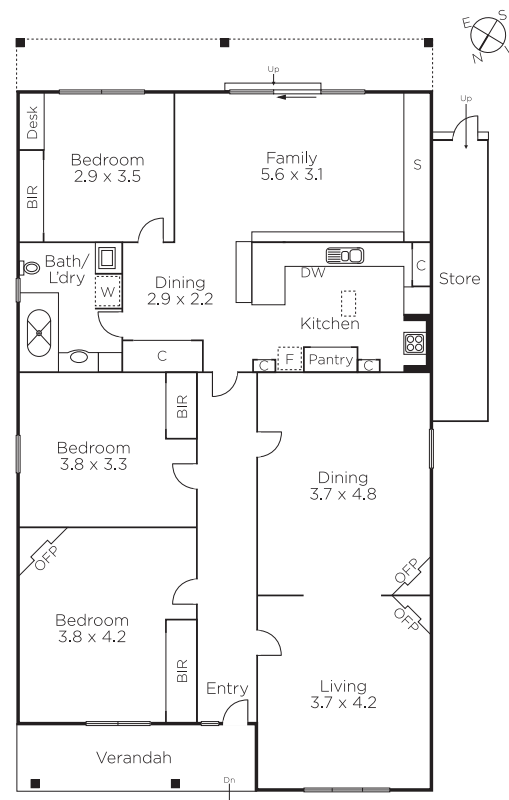
Ben Vieth
0404 084 793

Simon Monnier-Penny
0404 283 551

Kate Strickland
0400 125 946


MARSHALLWHITE

225 Bay Street, Brighton



Disclaimer: Information provided is believed to be accurate as at the date of printing, no responsibility is taken for any errors or omissions. It is your responsibility to obtain independent, professional advice. Personal information collected from you is for security purposes and to contact you should the property sell prior to auction. We may use this information to provide you with other real estate services including referrals to authorised financial services providers. Visit our website at www.marshallwhite.com.au for our privacy policy.