



MARSHALLWHITE

2b Garden Avenue
Brighton East



Exclusive Luxury and Superb Architecture

Few residences can match the architectural integrity, precision construction and deluxe interior of this like-new residence. Designed by Bower Architecture and constructed by Bowden Corporation, this comes with an impeccable fitout on show in two living zones, four bedrooms, and a marble and stone kitchen with butler's pantry. Large and luxurious family room, serene lounge, state-of-the-art parents' retreat, and many features including Sonos sound, gas fireplace, and six-star energy rating. Built on 485sqm approx. of land, this is a private and privileged oasis near South Road's schools and Dendy Park.

4 3 2

Expressions of Interest Close Thursday 13th December at 5pm

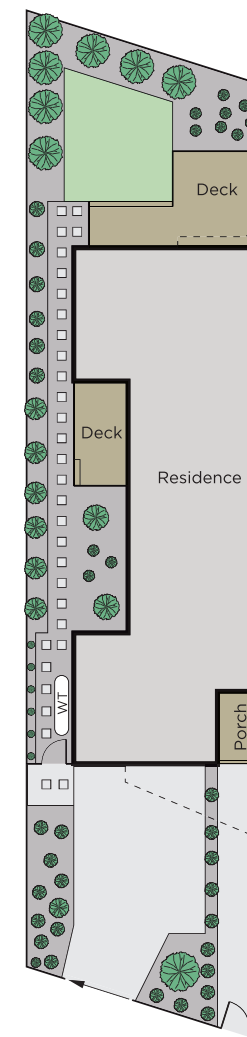
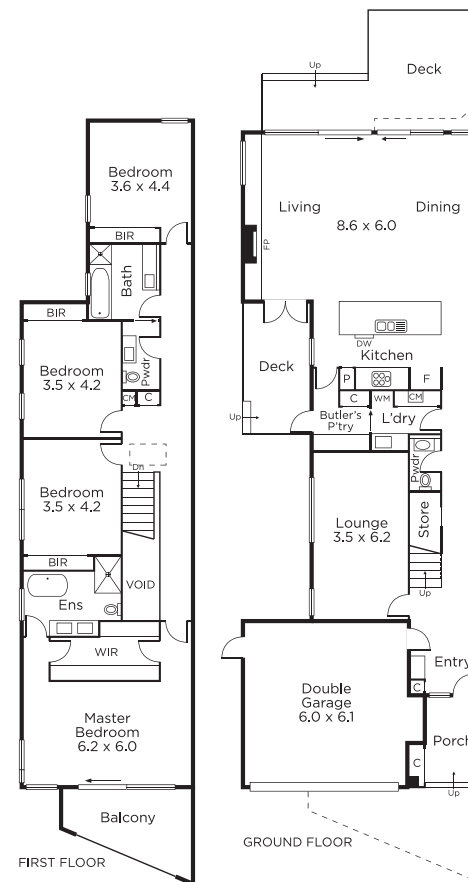
Andrew Campbell
0419 366 545

Ben Vieth
0404 084 793

Jack Johnstone
0426 241 841


MARSHALLWHITE

225 Bay Street, Brighton



Disclaimer: Information provided is believed to be accurate as at the date of printing, no responsibility is taken for any errors or omissions. It is your responsibility to obtain independent, professional advice. Personal information collected from you is for security purposes and to contact you should the property sell prior to auction. We may use this information to provide you with other real estate services including referrals to authorised financial services providers. Visit our website at www.marshallwhite.com.au for our privacy policy.