



3
97


MARSHALLWHITE
2/97 Cruikshank Street
Port Melbourne



Sensational Warehouse-Style Appeal

In a warehouse inspired boutique residence, this sensational 3-level contemporary home provides idyllic indoor-outdoor lifestyle appeal near Bay Street, South Melbourne Market, Albert Park Village, the beach, schools and trams. The expansive living/dining areas and gourmet kitchen open to two large private east and west terraces. The flexible floorplan offers the main bedroom with stylish ensuite on either the ground floor or second floor, whilst a third bedroom (robe), study/4th bedroom and sleek bathroom are on the ground level. Includes video intercom, powder-room, Euro-laundry and 2xgarage.

2-97cruikshankstreet-portmelbourne.com

4 3 2

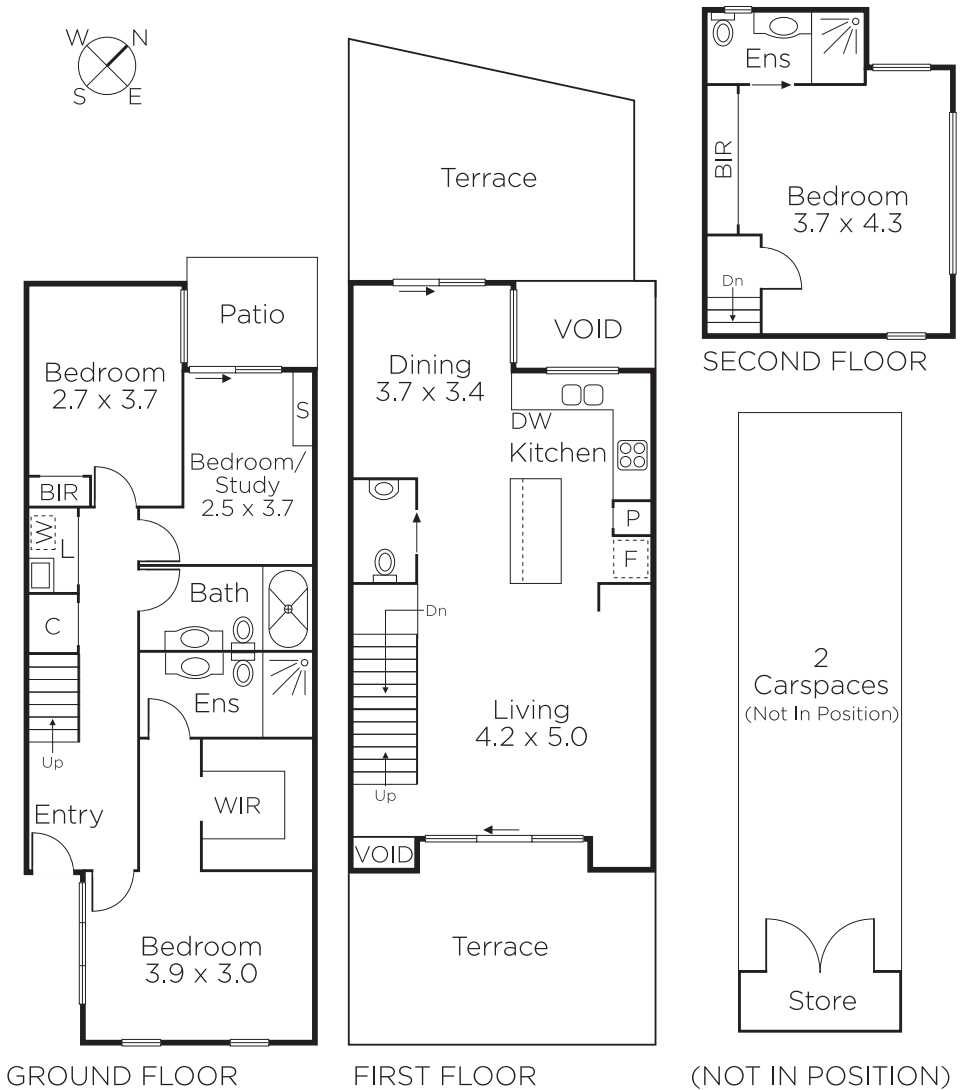
Auction Saturday 27th May at 10.30am

Sarah Wood 0408 902 827

Oliver Bruce 0409 856 599

101 Dundas Place Albert Park
marshallwhite.com.au

MARSHALLWHITE



Disclaimer: Information provided is believed to be accurate as at the date of printing, no responsibility is taken for any errors or omissions. It is your responsibility to obtain independent, professional advice. Personal information collected from you is for security purposes and to contact you should the property sell prior to auction. We may use this information to provide you with other real estate services including referrals to authorised financial services' providers. Visit our website at www.marshallwhite.com.au for our privacy policy.