



MARSHALLWHITE  
ONE

2/92 Wattletree Road  
Armadale





## Armada Terrace - Vast, Northern Exposure

This particularly spacious, secure and superbly appointed, single bedroom, ground floor apartment enjoys the most divine and sun-filled, north-facing, al fresco flow, all in a premium Armadale setting within metres of Malvern Central Shopping Centre, Glenferrie Rd and plenty of public transport. As it flows through huge glass sliding doors to a vast courtyard where established palm trees reinforce a remarkable sense of escape, the open-plan kitchen / meals / living is genuinely large with attractive parquet floors, a mixture of SMEG and Bosch appliances, resilient stone benches and sleek glass splash backs. Secure undercover parking is an enormous drawcard in this thriving location, for this home with intercom entry, two entry points, walk-in robes and semi-ensuite access to the bathroom, plus a European laundry and split system heating / cooling.

2-92wattlereeroad-armadale.com

1 1 1

Auction Saturday 26th October at 1pm

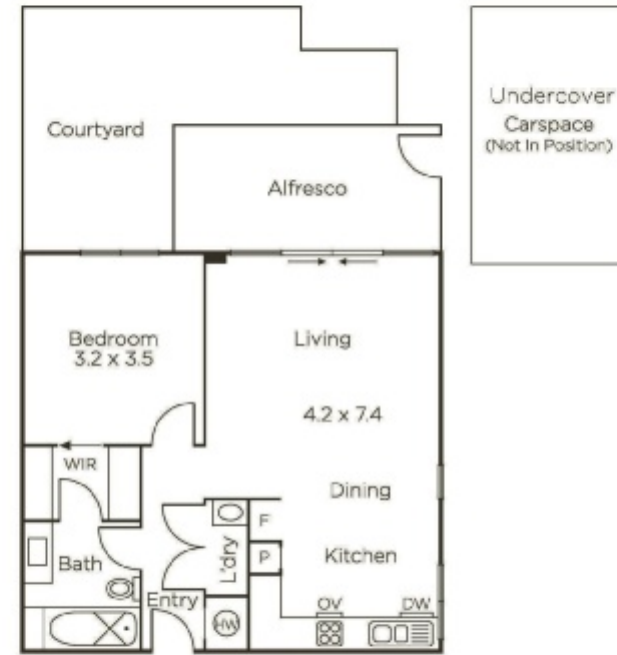
Joseph Ben-Danan 0408 135 948

Tom Hayne 0429 149 070

Madeline Kennedy 0411 873 913

1111 High Street Armadale

9822 9999 mwone.com.au



Balcony Area: 58 sqm (approx.)



**MARSHALLWHITE**  
**ONE**

Disclaimer: Information provided is believed to be accurate as at the date of printing, no responsibility is taken for any errors or omissions. It is your responsibility to obtain independent, professional advice. Personal information collected from you is for security purposes to contact you should the property sell prior to auction. We may use this information to provide you with other real estate services including referrals to authorized financial services' providers. Visit our website at [www.mwone.com.au](http://www.mwone.com.au) for our privacy policy.