



MARSHALLWHITE

29 John Street
Malvern East



Stylish Serenity on the Fringe of Gascoigne Estate

Enjoying a tranquil setting at the end of a cul de sac on the fringe of the Gascoigne Estate, this captivating period residence provides an enticing single level environment near Malvern Primary, trams, Central Park & shops. Baltic pine floors flow through the hall to a formal room, main bedroom with open fire, ensuite & built in robe, two additional bedrooms, study & second bathroom. Northern light streams through the spacious living/dining room with gas fire & gourmet kitchen opening to private leafy north gardens. Includes alarm, laundry, irrigation & off street parking. Land size: 493sqm (approx.)

3 2 1

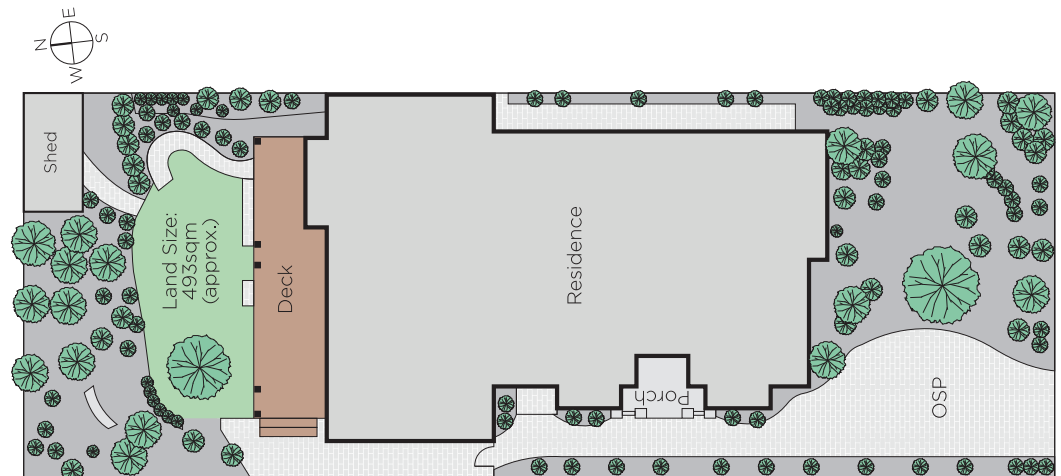
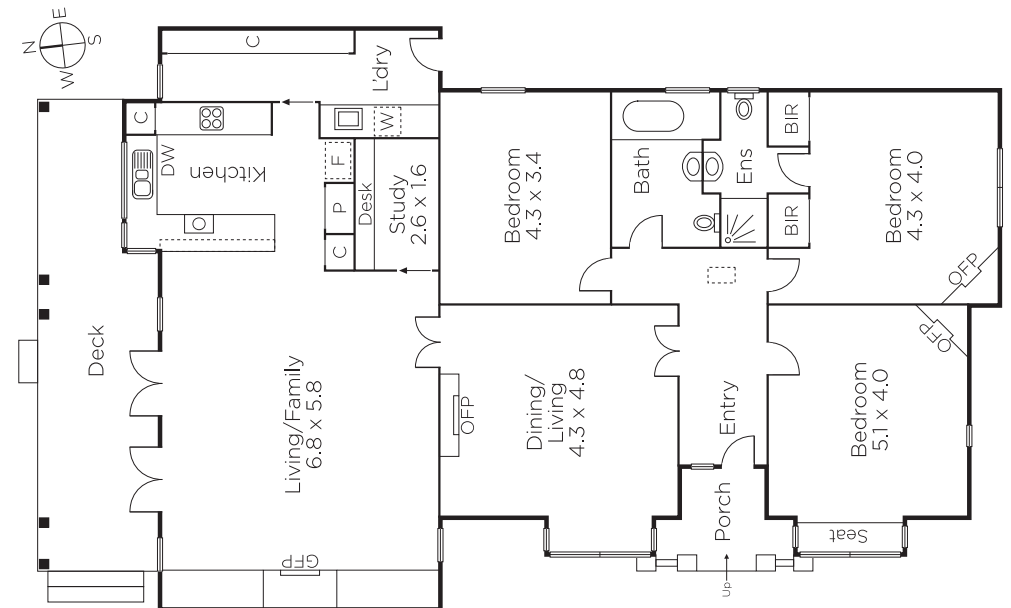
Auction Saturday 24th November at 10.30am

David Volpato
0414 701 983

James Redfern
0412 360 667


MARSHALLWHITE

1111 High Street, Armadale



Disclaimer: Information provided is believed to be accurate as at the date of printing, no responsibility is taken for any errors or omissions. It is your responsibility to obtain independent, professional advice. Personal information collected from you is for security purposes and to contact you should the property sell prior to auction. We may use this information to provide you with other real estate services including referrals to authorised financial services providers. Visit our website at www.marshallwhite.com.au for our privacy policy.