



MARSHALLWHITE

281 Esplanade East
Port Melbourne



Transformed Victorian in Prime Location

An inspired architectural design that brilliantly maximizes space and northern light has resulted in this sophisticated and stylish domain near Bay St shops and restaurants, the beach, Sth Melbourne Market, the light rail and schools. Within a classic Victorian façade, contemporary style defines the generous living/dining room with pebble gas fire and gourmet kitchen opening to a private north courtyard. Three double bedrooms with robes all feature stylish en-suites while a 4th possible bedroom/study and retreat open to a north-facing sun-deck offering city views.

Includes auto blinds and Euro-laundry.

281esplanadeeast-portmelbourne.com

3 3

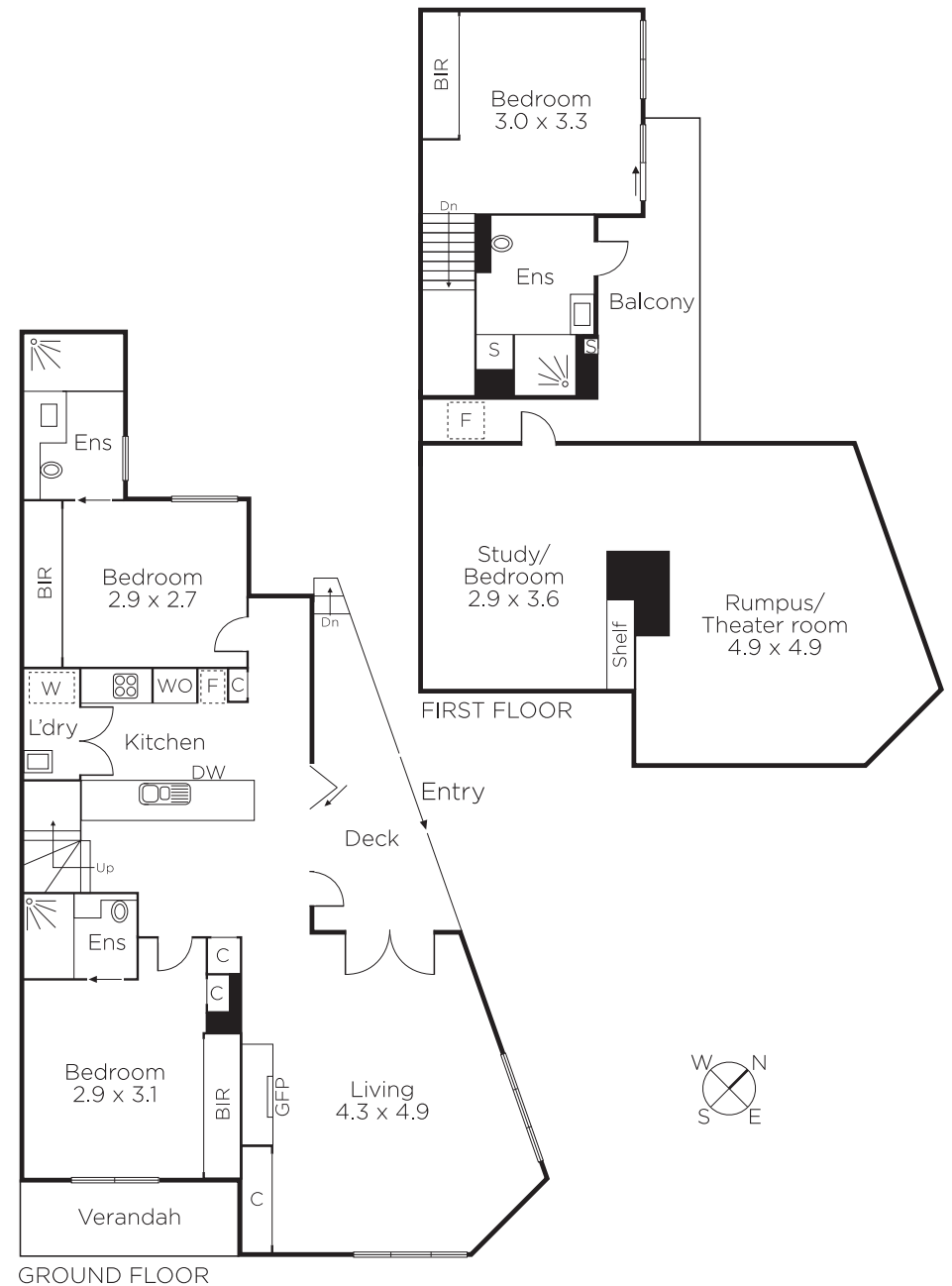
Auction Saturday 6th May at 1.30pm

Justin Holod 0411 669 161

Nicholas Beks 0417 511 548

101 Dundas Place Albert Park
marshallwhite.com.au


MARSHALLWHITE



Disclaimer: Information provided is believed to be accurate as at the date of printing, no responsibility is taken for any errors or omissions. It is your responsibility to obtain independent, professional advice. Personal information collected from you is for security purposes and to contact you should the property sell prior to auction. We may use this information to provide you with other real estate services including referrals to authorised financial services' providers. Visit our website at www.marshallwhite.com.au for our privacy policy.