



  
MARSHALLWHITE

2/8 Tyne Street  
Camberwell





## Superior Quality, Single Level Ease

Brilliantly designed around a central courtyard, this impressively finished residence delivers single level refinement & low-maintenance convenience with a sophisticated sense of style. Contemporary elegance is displayed through generous formal room, living/dining and gourmet kitchen opening to the idyllic private courtyard. The main bedroom with stunning en-suite & walk in robe is matched by 2 additional bedrooms (robes) & a stylish bathroom. Close to Lynden Park, Leo's, trams, Burwood and Hartwell stations and schools, it includes alarm, security intercom, powder-room, auto gates & double garage.

2-8tynestreet-camberwell.com

3 2.5 2

Auction Saturday 17th March at 1.30pm

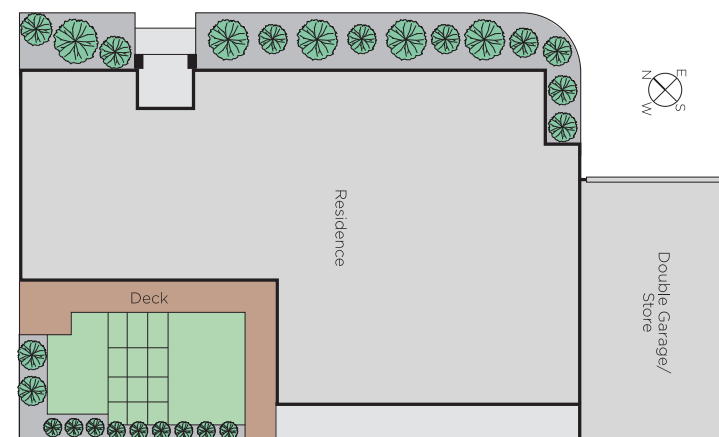
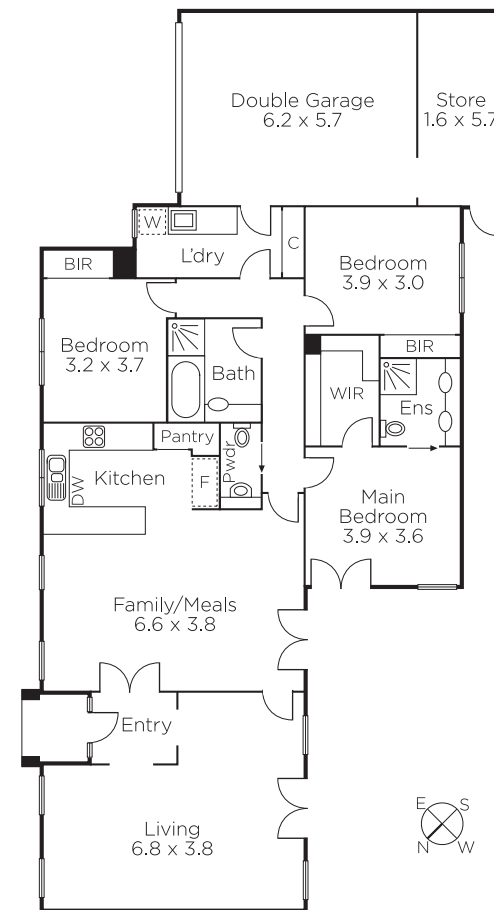
Désirée Wakim  
0412 336 266

Hamish Tostevin  
0408 004 766

Kane Penhalluriack  
0406 556 445

  
MARSHALLWHITE

801 Glenferrie Road, Hawthorn



Disclaimer: Information provided is believed to be accurate as at the date of printing, no responsibility is taken for any errors or omissions. It is your responsibility to obtain independent, professional advice. Personal information collected from you is for security purposes and to contact you should the property sell prior to auction. We may use this information to provide you with other real estate services including referrals to authorised financial services providers. Visit our website at [www.marshallwhite.com.au](http://www.marshallwhite.com.au) for our privacy policy.