



Rae Tomlinson 0418 336 234
rae.tomlinson@marshallwhite.com.au

Madeline Kennedy 0411 873 913
madeline.kennedy@marshallwhite.com.au

1111 High Street, Armadale



MARSHALLWHITE

28 Thanet Street,
Malvern

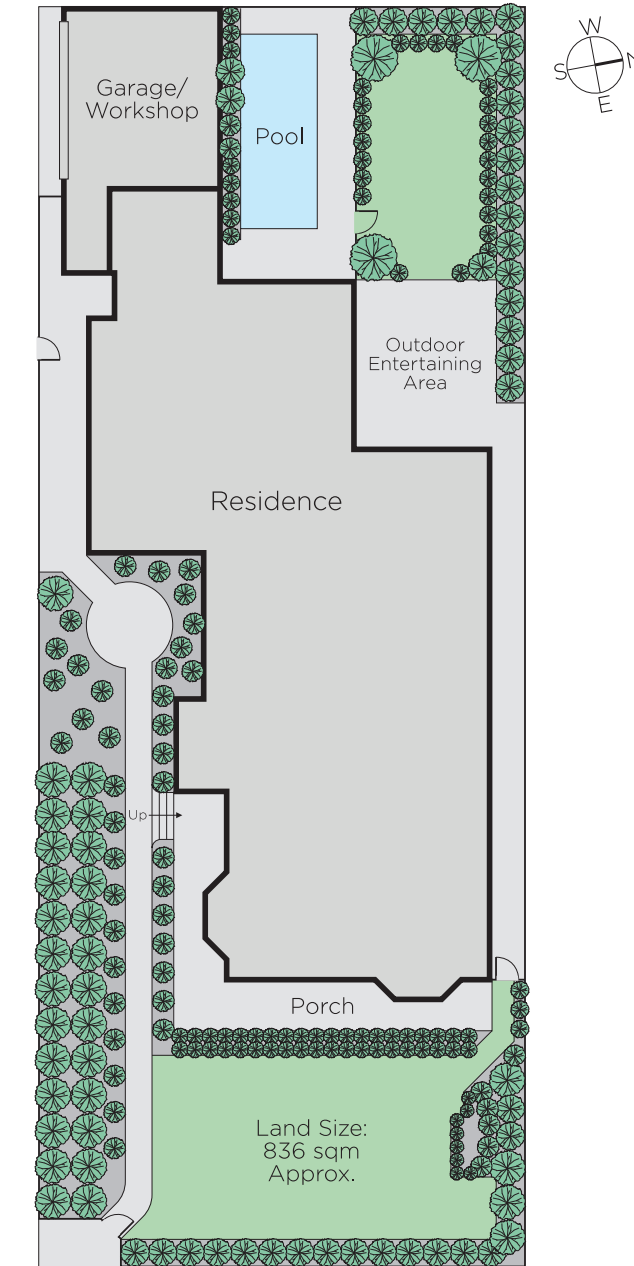
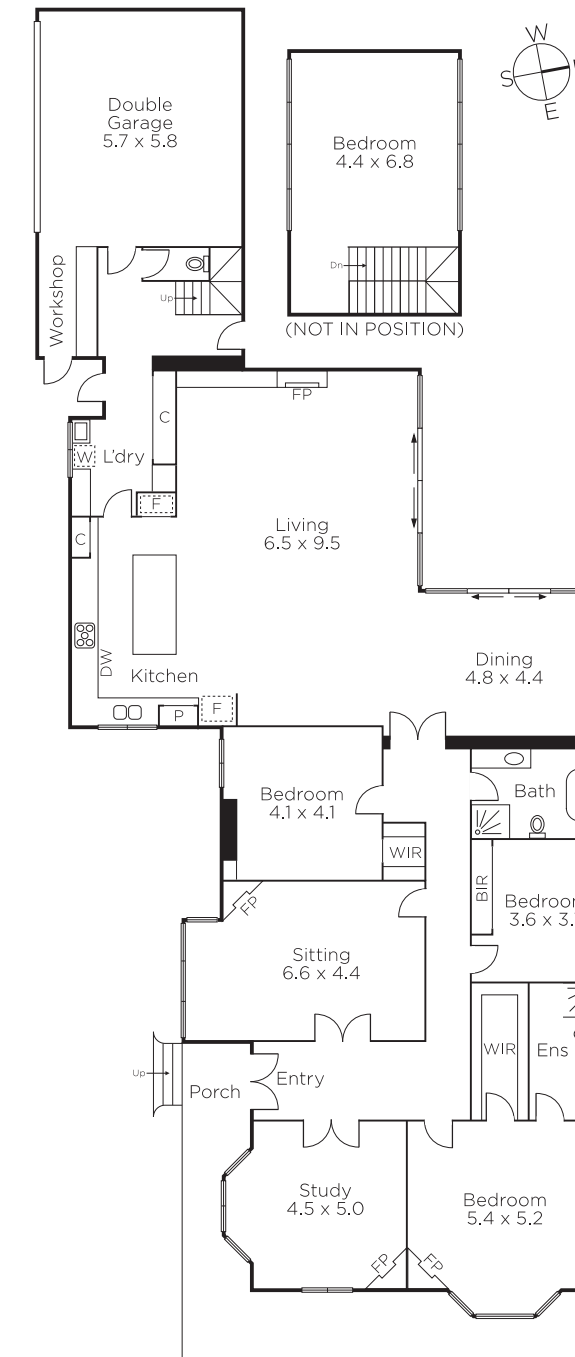


Enjoying a highly sought after location near Glenferrie Rd, schools & trams, the irresistible appeal of this distinguished four bedroom solid brick Federation residence's blend of exquisite elegance & designer style is immeasurably enhanced by its stunning northwest garden & pool surrounds. The reception hall featuring dark Baltic pine floors & high ceilings flows through to a beautiful study with open fire & a gracious sitting room with gas fireplace.

Spectacular in scale, the light-filled living & dining room with marble gas fire & gourmet Miele kitchen with wine fridge opens to a picturesque private northwest garden & pool. The glorious main bedroom with open fire, walk in robe & lavish en-suite is accompanied by two double bedrooms with robes, a designer bathroom with freestanding bath & an upstairs 4th bedroom or retreat. Double lock-up garage with internal access. Land size 836sqm approx.

Auction Saturday 28th October at 1.30pm
28th.netstreet-malvern.com





Disclaimer: Information provided is believed to be accurate as at the date of printing, no responsibility is taken for any errors or omissions. It is your responsibility to obtain independent, professional advice. Personal information collected from you is for security purposes and to contact you should the property sell prior to auction. We may use this information to provide you with other real estate services including referrals to authorised financial services' providers. Visit our website at www.marshallwhite.com.au for our privacy policy.