



28


MARSHALLWHITE

28 New Street
Armadale



Irresistible Elegance and Serenity

Magnificently displaying exquisite period elegance, the gracious dimensions of this beautiful c1910 Edwardian residence create a wonderful serene sanctuary only moments from High St, Armadale station, schools and Victory Square Reserve. Elaborate high ceilings are featured through the wide hall, main bedroom with open fireplace, built in robes and en-suite, second bedroom with open fireplace and built in robe and bathroom. The impressive sitting and formal dining room with open fireplace, casual dining area and superb kitchen open to a private covered courtyard with off street parking. Includes security intercom and attic storage.

28newstreet-armadale.com

2 2 1

Auction Saturday 19th August at 2.30pm

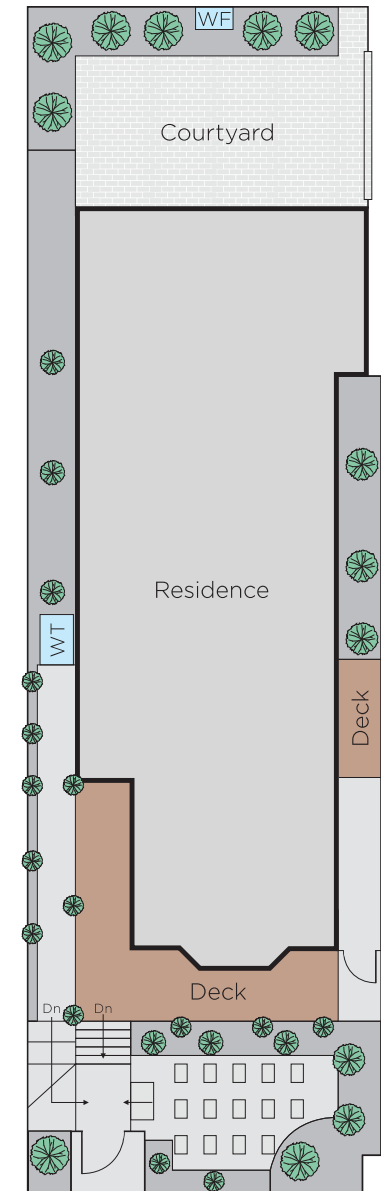
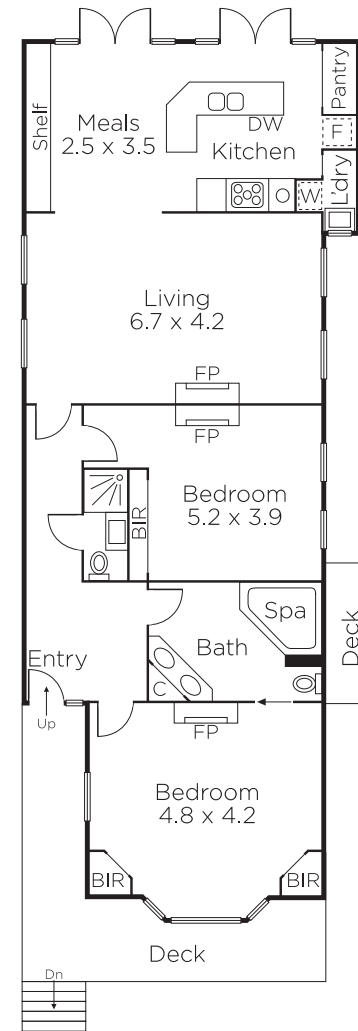
Fraser Cahill 0400 592 572

Dean Gilbert 0418 994 939

Richard Mackinnon 0414 822 579

1111 High Street Armadale
marshallwhite.com.au


MARSHALLWHITE



Disclaimer: Information provided is believed to be accurate as at the date of printing, no responsibility is taken for any errors or omissions. It is your responsibility to obtain independent, professional advice. Personal information collected from you is for security purposes and to contact you should the property sell prior to auction. We may use this information to provide you with other real estate services including referrals to authorised financial services' providers. Visit our website at www.marshallwhite.com.au for our privacy policy.