



MARSHALLWHITE

28 Nelson Place
South Melbourne



"The Island House"

A quiet street sets the scene for this 3 bedroom freestanding double fronted Victorian residence defined by its traditional beauty and charming details tucked behind a pristine façade with a picket fence and lush greenery. Presenting spaciousness beyond expectation each bedroom is equipped with built-in robes, while the main features a large ensuite, and the third bedroom/study features a loft attic space. The open-plan living/dining area comprises fireplace and modern kitchen, with glass doors to a north-facing courtyard and garden. Additional features include a bathroom, laundry, built-in barbeque and 3 street frontages.

28nelsonplace-southmelbourne.com

3 2 1

Auction Saturday 6th May at 12.30pm

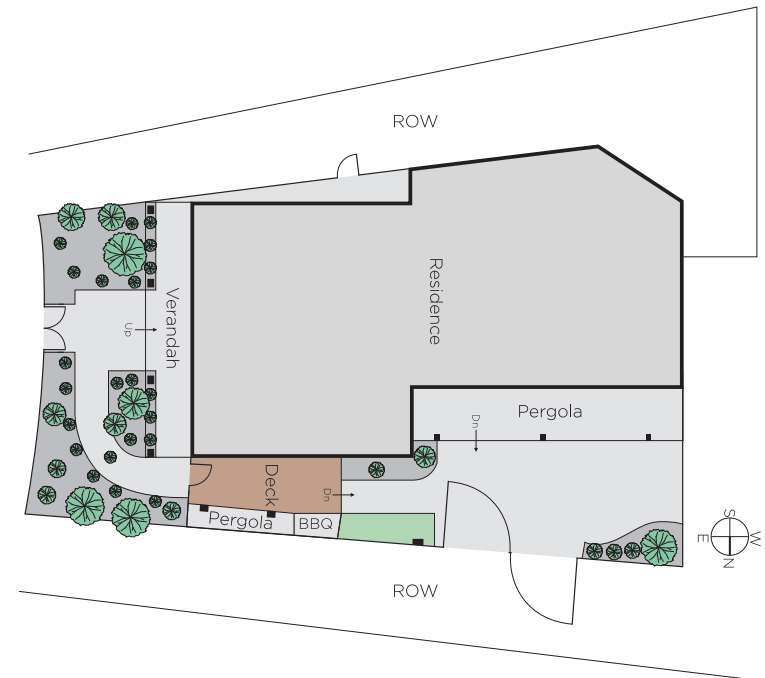
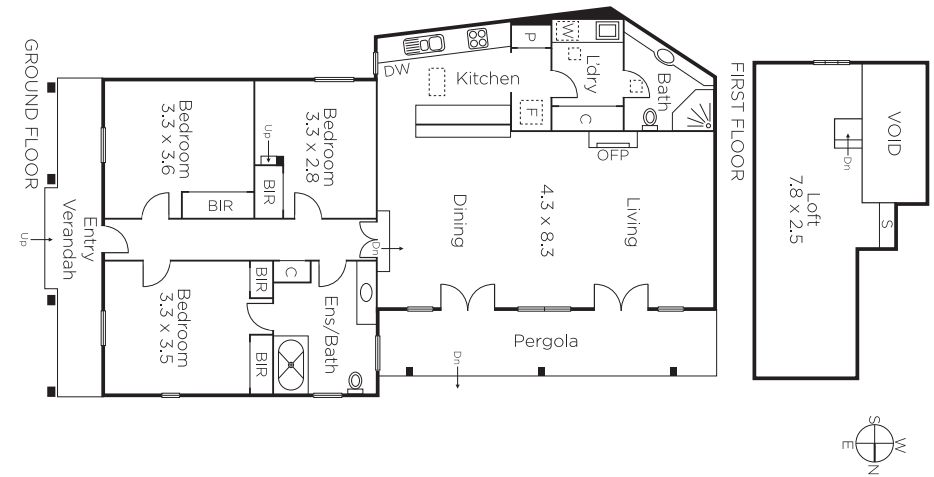
Kaine Lanyon 0411 875 478

Oliver Bruce 0409 856 599

Colette Valdock 0468 367 100

101 Dundas Place Albert Park
marshallwhite.com.au


MARSHALLWHITE



Disclaimer: Information provided is believed to be accurate as at the date of printing, no responsibility is taken for any errors or omissions. It is your responsibility to obtain independent, professional advice. Personal information collected from you is for security purposes and to contact you should the property sell prior to auction. We may use this information to provide you with other real estate services including referrals to authorised financial services' providers. Visit our website at www.marshallwhite.com.au for our privacy policy.