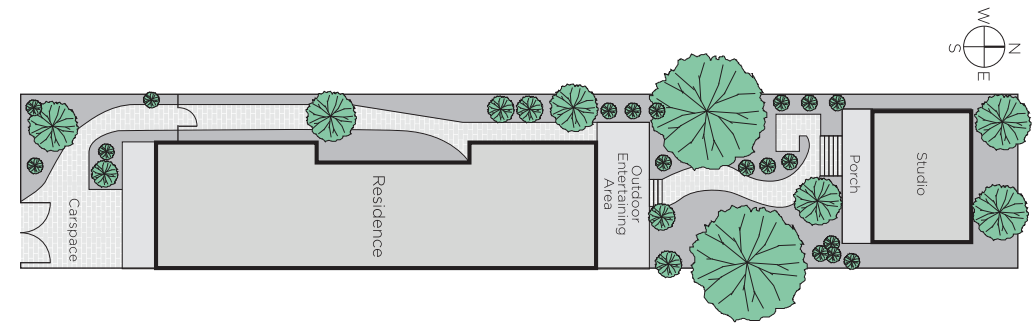
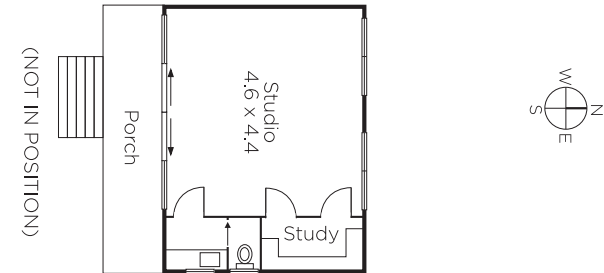
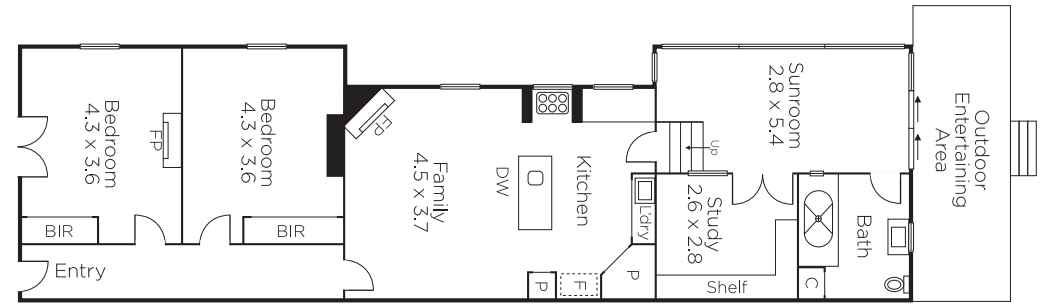




28


MARSHALLWHITE

28 Allenby Road
Canterbury



Captivating Charm, Coveted Location

Rich in character and charm, this evocative solid brick and slate roofed Victorian residence's versatile spaces and deep north-facing garden delivers idyllic lifestyle appeal near Burke Road shops and trams, Camberwell station and schools. Baltic pine floors and high ceilings define the wide hall, two bedrooms with built in robes, a study/third bedroom and stylish bathroom. The inviting dining room with open fire, modern kitchen and light-filled living room open to a deep north-facing garden with freestanding studio/retreat with powder-room. Perfect for now but also offering scope to extend, it includes off street parking.

3 1 1

Private Sale

Grayson Rayner 0433 654 744

Daniel Williams 0402 182 704

Sophie Su 0425 270 125

801 Glenferrie Road Hawthorn
marshallwhite.com.au



Disclaimer: Information provided is believed to be accurate as at the date of printing, no responsibility is taken for any errors or omissions. It is your responsibility to obtain independent, professional advice. Personal information collected from you is for security purposes and to contact you should the property sell prior to auction. We may use this information to provide you with other real estate services including referrals to authorised financial services' providers. Visit our website at www.marshallwhite.com.au for our privacy policy.