



27a


MARSHALLWHITE



27a Thanet Street
Malvern





Classic Architecture, Coveted Locale

Displaying timeless elegance and a pleasing generosity of scale, this Nicholas Day classically designed executive residence's beautifully presented dimensions are equally ideal for lavish entertaining and relaxed family living in a highly sought after location near the Glenferrie Rd and High St shopping and restaurant precincts, trams and schools. The ample reception hall featuring parquet floors sets the tone for the gracious formal sitting and dining room appointed with an open fire and French doors to a leafy side garden. Parquet floors continue through the gourmet stone kitchen and spacious, light-filled living and dining room opening to a picturesque private northeast garden shaded by a grove of Birch trees. Sky-lit stairs lead up to the gorgeous main bedroom with en-suite and walk in robe, three additional double bedrooms with built in robes and a bright bathroom. The perfect lock up and leave lifestyle solution, it also includes a powder-room, laundry and internally accessed double garage.

4  2  2 

Auction Saturday 1st December at 12.30pm

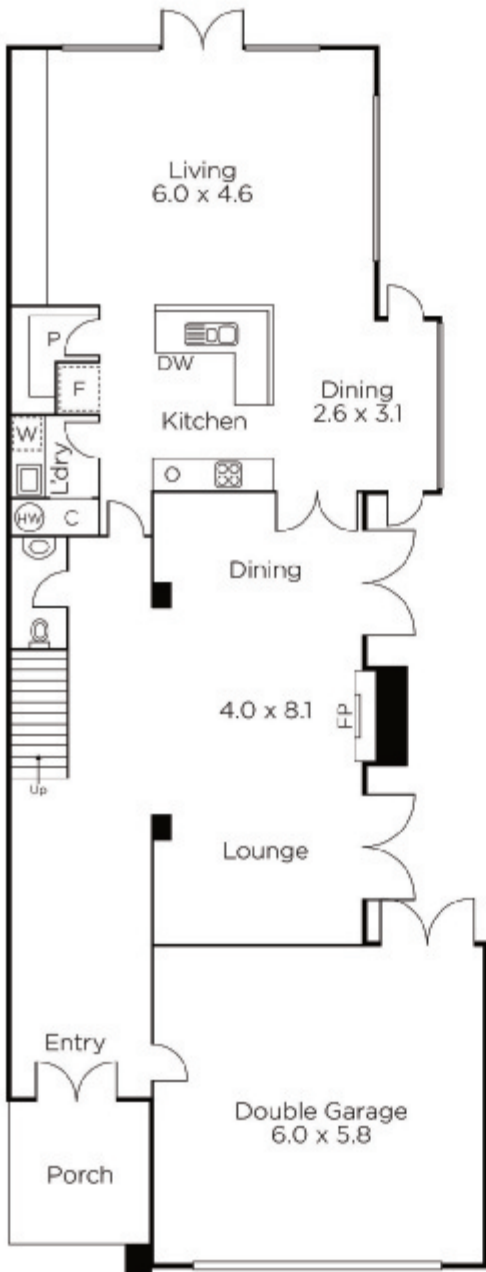
Fraser Cahill
0400 592 572

Richard Mackinnon
0414 822 579

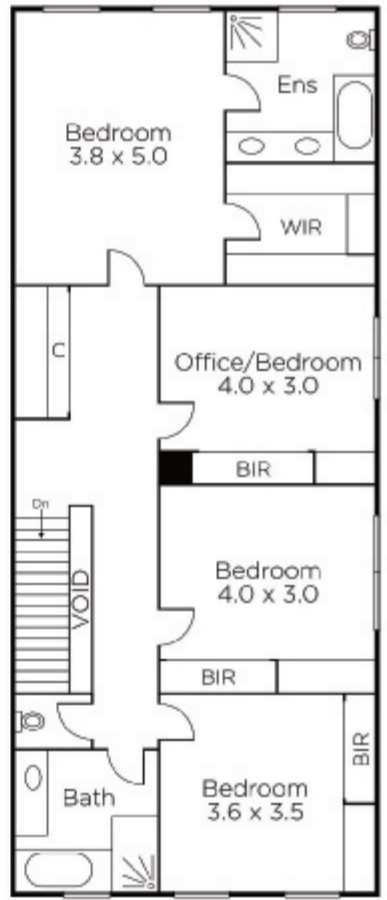
Mark Harris
0414 799 343


MARSHALLWHITE

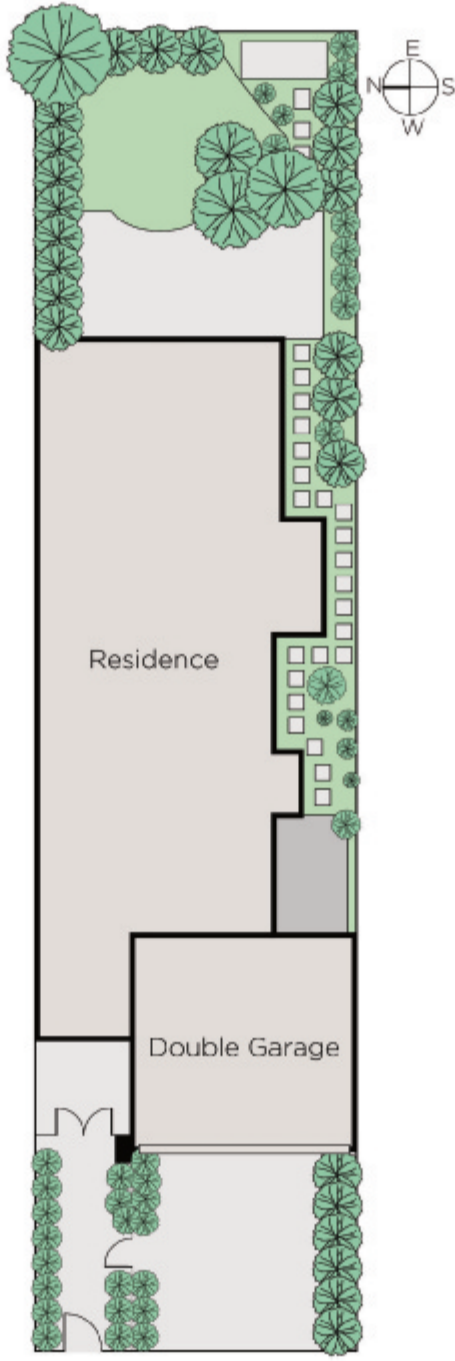
1111 High Street, Armadale



GROUND FLOOR



FIRST FLOOR



Disclaimer: Information provided is believed to be accurate as at the date of printing, no responsibility is taken for any errors or omissions. It is your responsibility to obtain independent, professional advice. Personal information collected from you is for security purposes and to contact you should the property sell prior to auction. We may use this information to provide you with other real estate services including referrals to authorised financial services' providers. Visit our website at www.marshallwhite.com.au for our privacy policy.