



MARSHALLWHITE


273 Dandenong Road
Prahran





Period Grace, Family Space

Prominently situated on the corner of Kenleigh Grove close to Lumley Park, High St's shops and restaurants, trams and schools, this evocative solid brick period residence's superb presentation and substantial dimensions provide immediate family appeal while also offering scope to further update if desired (STCA). A memorable first impression is created by the ornate ceilings, leadlight windows and generous proportions in the welcoming central hall. Dark timber floors flow through the formal dining room with open fireplace and elegant sitting room. The well appointed kitchen and spacious, light-filled living and dining areas open to a deep private north-facing garden with double garage accessed via Kenleigh Gr. The dark timber floors continue through two downstairs double bedrooms with a fully tiled bathroom while upstairs there are three additional double bedrooms with robes, a mezzanine retreat and second bathroom. Ideal to move in now and enjoy while considering potential improvements, it also includes an alarm, laundry, irrigation and 2 additional car-spaces. Land size: 706sqm (approx.)

5  2  4 

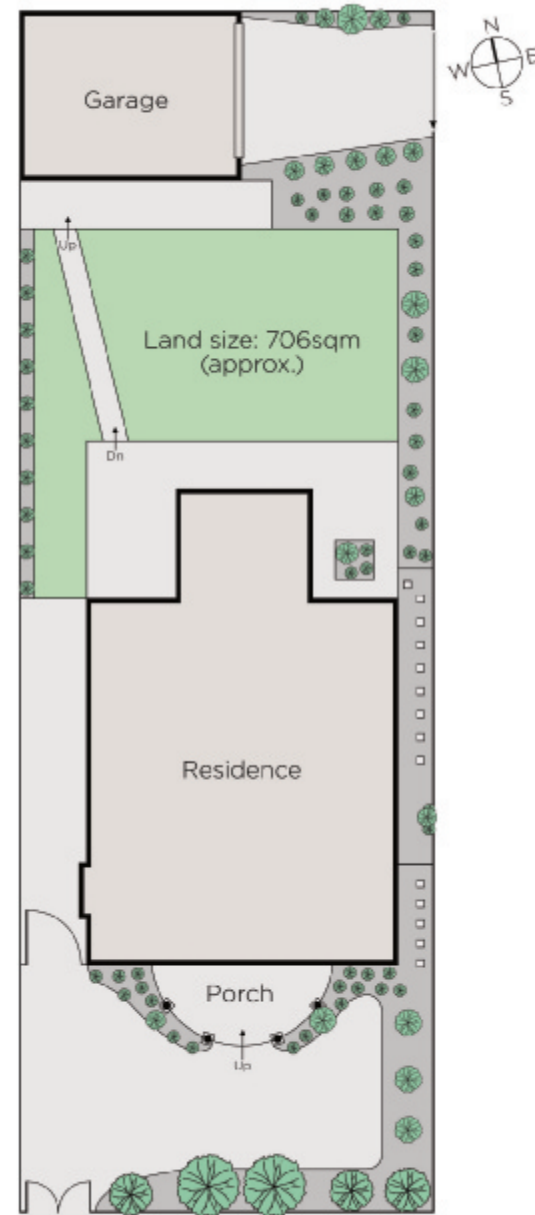
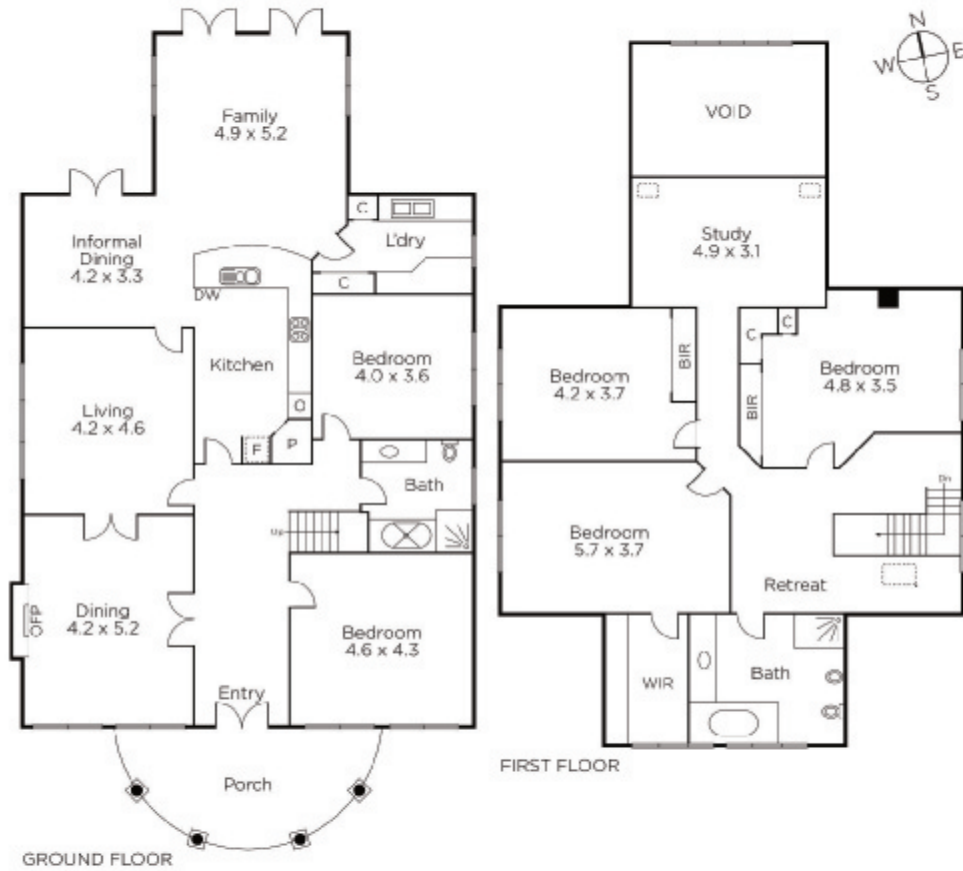
Auction Saturday 16th February at 9.30am

Dean Gilbert
0418 994 939

James McCormack
0410 503 389


MARSHALLWHITE

1111 High Street, Armadale



Disclaimer: Information provided is believed to be accurate as at the date of printing, no responsibility is taken for any errors or omissions. It is your responsibility to obtain independent, professional advice. Personal information collected from you is for security purposes and to contact you should the property sell prior to auction. We may use this information to provide you with other real estate services including referrals to authorised financial services' providers. Visit our website at www.marshallwhite.com.au for our privacy policy.