

JESSAMINE AVENUE



727sqm
(approx.)

44.10m

16.76m



MARSHALLWHITE

271 Dandenong Road
Prahran





Instantly Captivating

Entrance of Jessamine Avenue

Superbly occupying a substantial north facing allotment on the corner of Jessamine Ave, the home is close to schools, trams and High St shops and cafes. This glorious solid brick Interwar residence's stylishly presented and impressively proportioned dimensions provide immediate family appeal with scope for future improvement (STCA). Reflecting the imposing proportions throughout, the exceptionally spacious central reception hall featuring ornate ceilings and dark timber floors flows through to a generous sitting room with open fire and a light-filled living room. The well appointed stone kitchen with inviting dining area and a sun-drenched retreat or study overlook the private north garden. The four expansive bedrooms all with dark timber floors are complemented by a large fully tiled bathroom with spa bath. Ideal to enjoy now while considering straightforward plans to extend or simply update, it also includes a laundry, storage and double garage accessed via Jessamine Ave. Land size: 727sqm (approx.)



4  1  2 

Auction Saturday 10th November at 9.30am

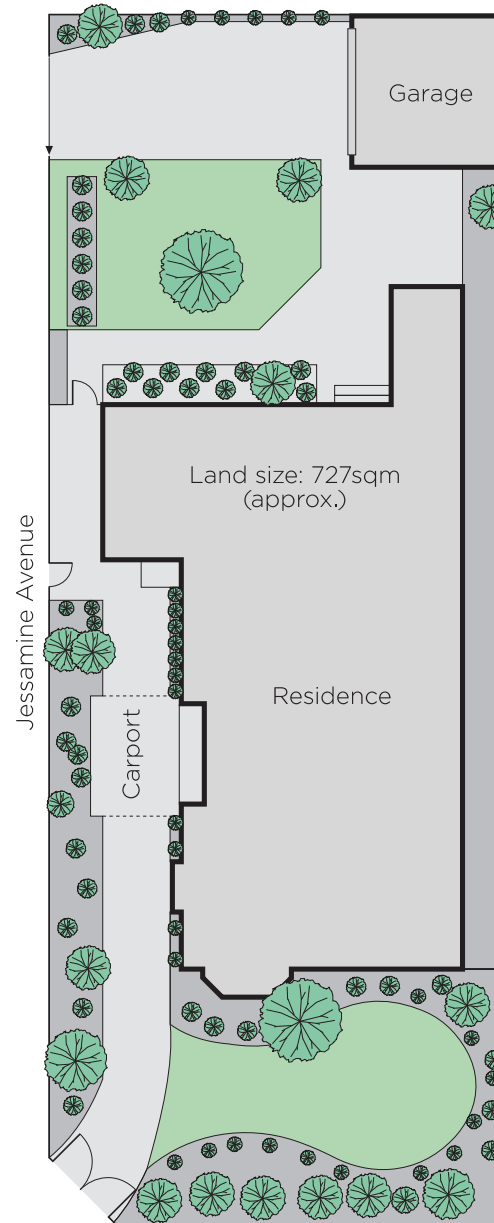
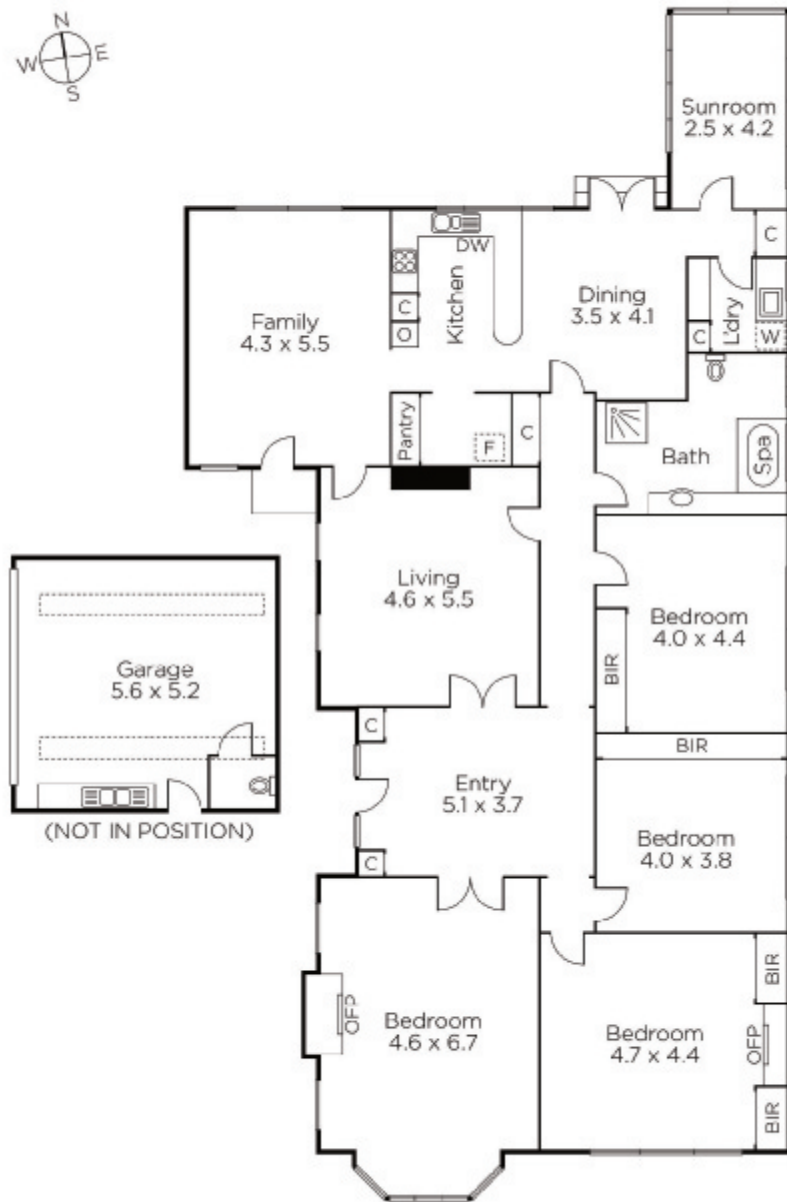
Dean Gilbert
0418 994 939

James McCormack
0410 503 389




MARSHALLWHITE

1111 High Street, Armadale



Disclaimer: Information provided is believed to be accurate as at the date of printing, no responsibility is taken for any errors or omissions. It is your responsibility to obtain independent, professional advice. Personal information collected from you is for security purposes and to contact you should the property sell prior to auction. We may use this information to provide you with other real estate services including referrals to authorised financial services' providers. Visit our website at www.marshallwhite.com.au for our privacy policy.