



MARSHALLWHITE

26a Wandsworth Road
Surrey Hills





"Montserrat" c1888 - A Piece of Surrey Hills History

"Montserrat" is a classic example of a single-storey Victorian Italianate mansion. It graces a magnificent garden spanning over 2,200sqm, reminiscent of a country estate. It presents a rare opportunity to purchase a landmark home of historic and architectural significance, one designed and built by its owner, architect George Jobbins.

It is defined by separate wings on either side of an informal living and dining room with a cathedral ceiling, stained glass window, Baltic Pine floors and a Spanish staircase which leads to a rooftop observation deck allowing City skyline glimpses. Gracious traditional rooms feature period attributes and an original arched hallway flowing to 4 bedrooms, study, 2 bathrooms, laundry and powder room. Plus a sitting room and formal dining room and a superbly appointed granite kitchen with breakfast room, Falcon gourmet stove and Miele dishwasher. The garden also houses a fully self-contained bungalow, IG spa and private alfresco dining area. Other features include hydronic heating, iron lacework verandahs, ceiling roses, marble OFPs, box bay windows, underground wine cellar and double garage with OSP/turning area.

4  2  2 

Auction Saturday 8th December at 2.30pm

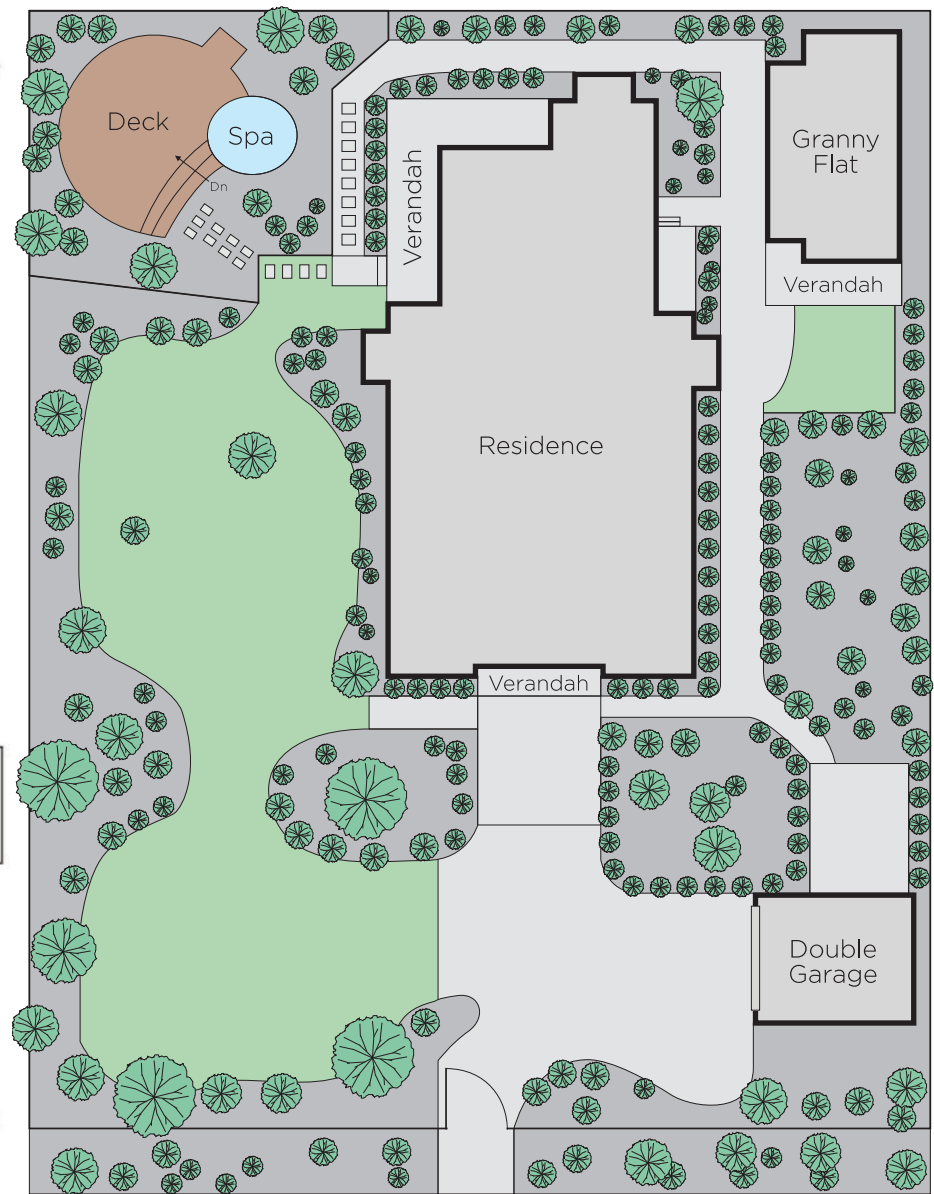
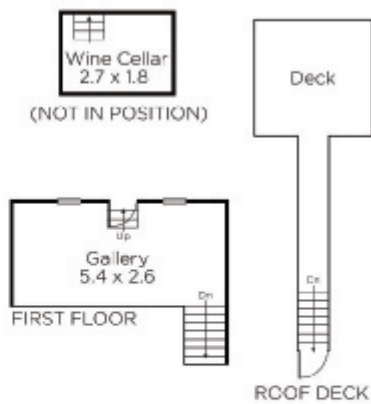
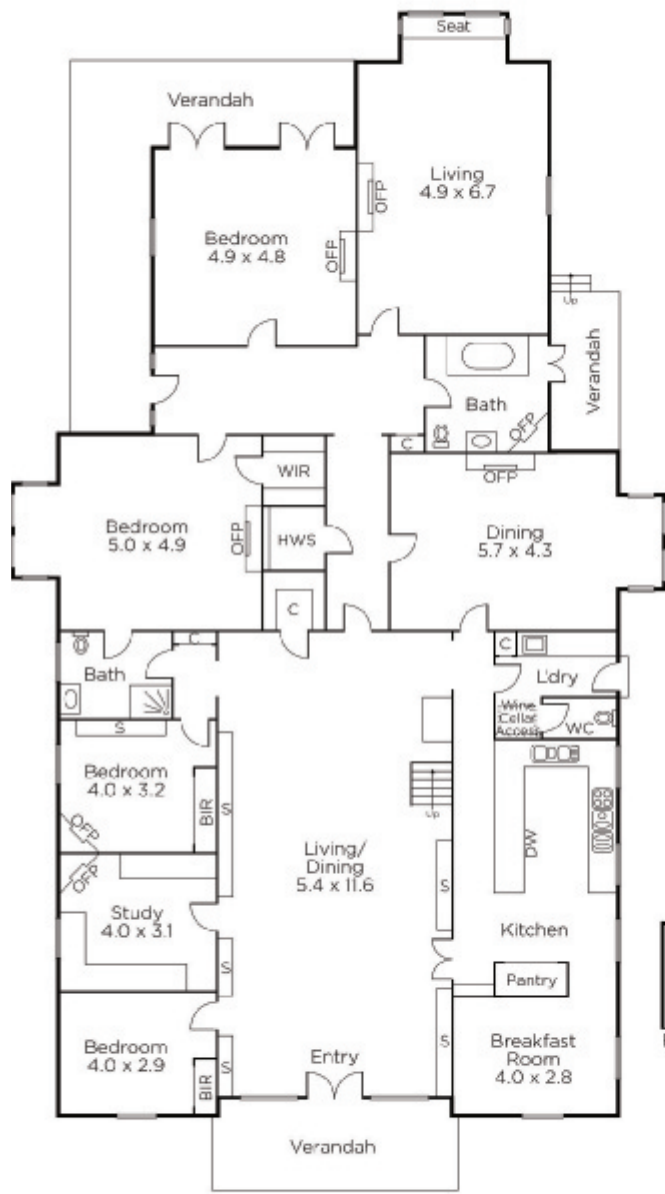
Hamish Tostevin
0408 004 766

Nicholas Franzmann
0412 247 175

Kathy Malcolm
0416 279 966


MARSHALLWHITE

801 Glenferrie Road, Hawthorn



Disclaimer: Information provided is believed to be accurate as at the date of printing, no responsibility is taken for any errors or omissions. It is your responsibility to obtain independent, professional advice. Personal information collected from you is for security purposes and to contact you should the property sell prior to auction. We may use this information to provide you with other real estate services including referrals to authorised financial services' providers. Visit our website at www.marshallwhite.com.au for our privacy policy.