




MARSHALLWHITE

2/68a Glyndon Road
Camberwell





Peerless Luxury and Refinement

A brilliant collaboration by architect Nicholas Day and landscape designer John Patrick has resulted in this luxurious 4 bedroom boutique residence. The lavishly appointed and proportioned residence delivers the ultimate in lock up and leave convenience near Middle Camberwell Village, Hartwell and Willison stations, Leo's, leading schools, parks and trams. The superior attention to detail throughout is highlighted by 3m ceilings and European oak parquetry floors. Custom designed wrought iron double doors introduce a central hallway, elegant sitting room and study. A premium kitchen appointed with Calacatta marble benches and Gaggenau appliances and the generous living/dining room with gas fireplace opens completely to a private landscaped north garden. The beautiful ground floor master bedroom with opulent Travertine en-suite and walk in robe sets a benchmark in luxury that is matched by a second double bedroom with Travertine en-suite and built in robe and two additional bedrooms with built in robes and a shared Travertine en-suite. Comprehensively appointed with alarm, video intercom, heating/cooling, ducted vacuum, powder-room, laundry, irrigation, auto gates and internally accessed double garage.

4  3  2 

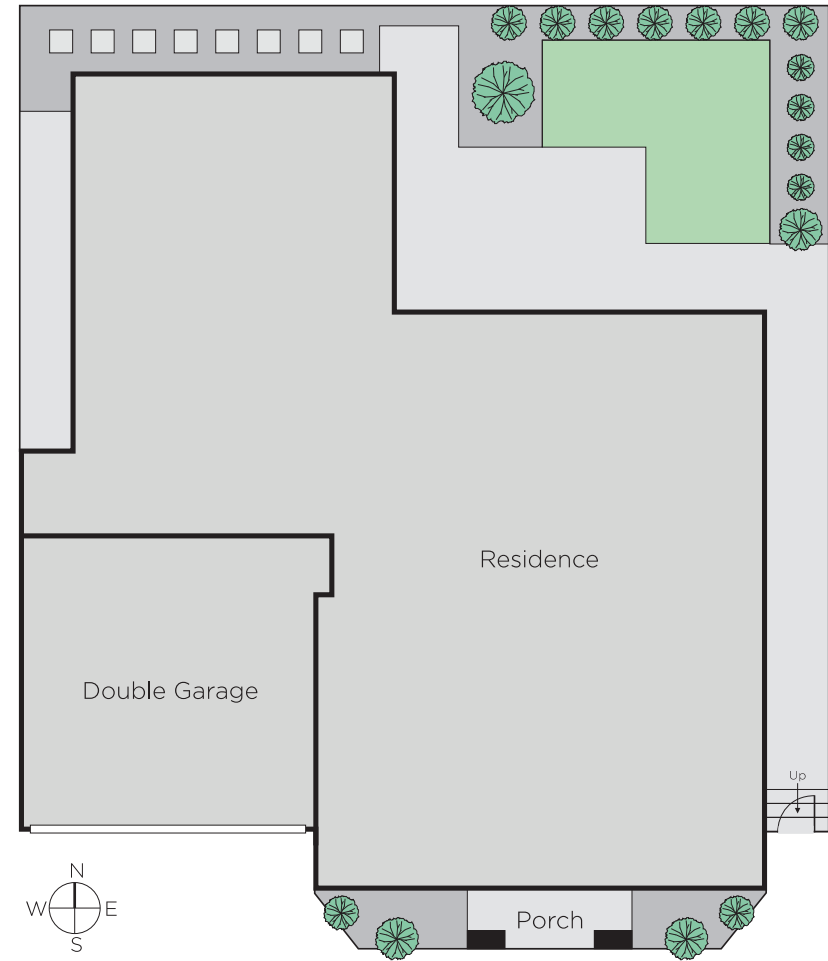
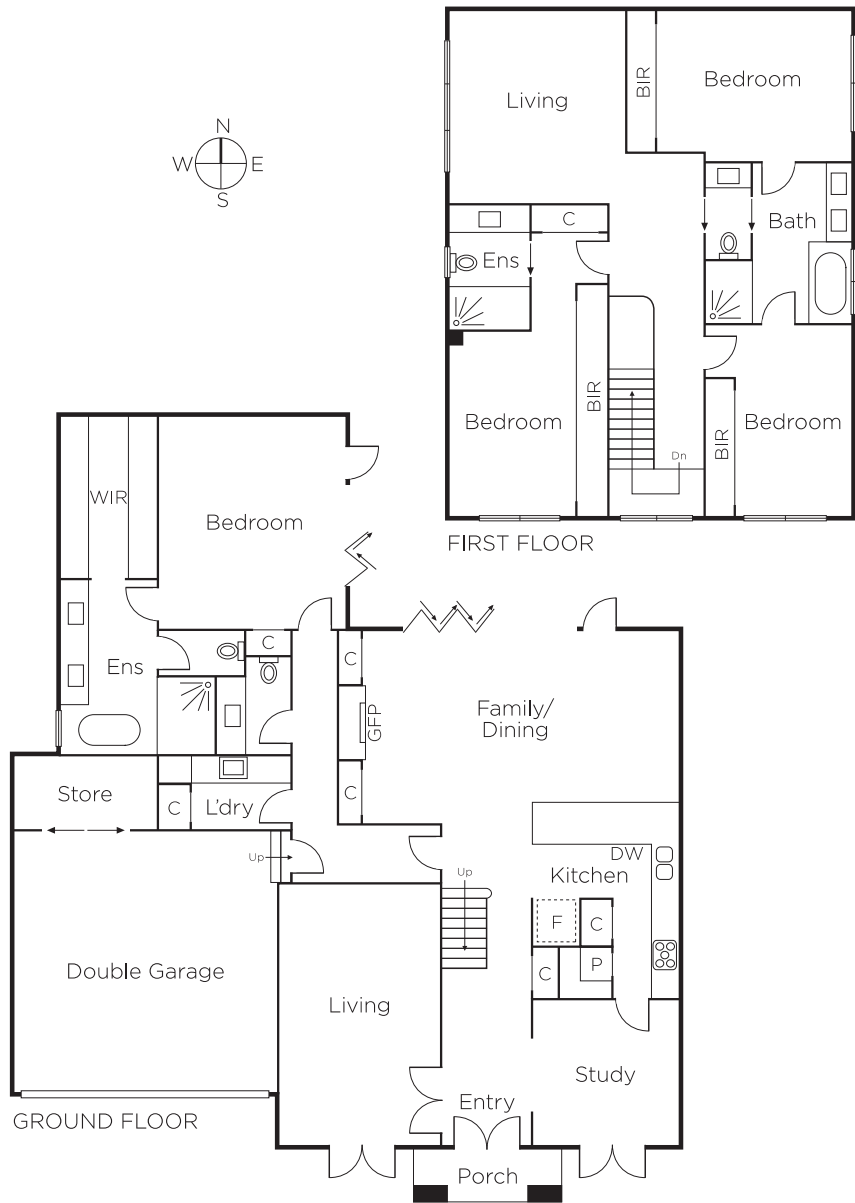
Auction Saturday 27th October at 12.30pm

Désirée Wakim
0412 336 266

Jason Brinkworth
0416 006 282

Hamish Tostevin
0408 004 766


MARSHALLWHITE
801 Glenferrie Road, Hawthorn



Disclaimer: Information provided is believed to be accurate as at the date of printing, no responsibility is taken for any errors or omissions. It is your responsibility to obtain independent, professional advice. Personal information collected from you is for security purposes and to contact you should the property sell prior to auction. We may use this information to provide you with other real estate services including referrals to authorised financial services' providers. Visit our website at www.marshallwhite.com.au for our privacy policy.