




MARSHALLWHITE
ONE

26/4 Victoria Street
Windsor



Superior and Private, North-Facing, Loft Apartment

Opening to an oversized, north-facing balcony with city glimpses, this loft apartment is just metres from Chapel Street offers genuine points of difference, making it a brilliant way to start or a wise way to invest in one of Melbourne's most coveted urban positions. Streamlined with a sunny flow to the balcony, the home's open-plan kitchen / living combines premium integrated appliances with stainless steel benches and a dramatic ceiling, whilst the bedrooms are discretely located upstairs. Highly secure with remote entry to a desirable underground car space combined with a huge storage cage, monitored security and elevator access. Metres from the intersection of Chapel St and High St, the selection of local cafes and restaurants is a foodies' dream, while the bars offer great nightlife options, the shops are brilliant and there is plenty of transport.

26-4victoriastreet-windsor.com

2 1 1

Auction Saturday 10th November at 2pm

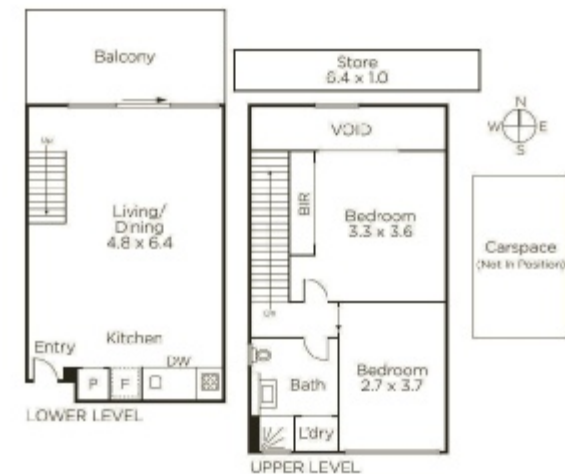
Jack Nicol 0400 774 428

Matt Giulieri 0407 851 206

Mark Harris 0414 799 343

1111 High Street Armadale

9822 9999 mwone.com.au



MARSHALLWHITE
ONE

Disclaimer: Information provided is believed to be accurate as at the date of printing, no responsibility is taken for any errors or omissions. It is your responsibility to obtain independent, professional advice. Personal information collected from you is for security purposes to contact you should the property sell prior to auction. We may use this information to provide you with other real estate services including referrals to authorized financial services providers. Visit our website at www.mwone.com.au for our privacy policy.