



263



MARSHALLWHITE

263 Bridge Street
Port Melbourne



Super Stylish, Superb Lifestyle

Perfectly positioned to enjoy a sensational inner bayside lifestyle close to Bay St, light rail, parks and the beach, this charming block-fronted residence has been taken to a spectacular new level of refinement by an inspired contemporary extension and renovation. Hardwood floors flow through the arched hall to two gorgeous bedrooms with built in robes and a stylish bathroom. The gourmet kitchen and exceptionally spacious living/dining open through bi-fold doors to a private garden with built in BBQ and bench seating. Appointed with plantation shutters, Euro-laundry and off street parking via rear lane.

2 1 1

Auction Saturday 27th October at 10.30am

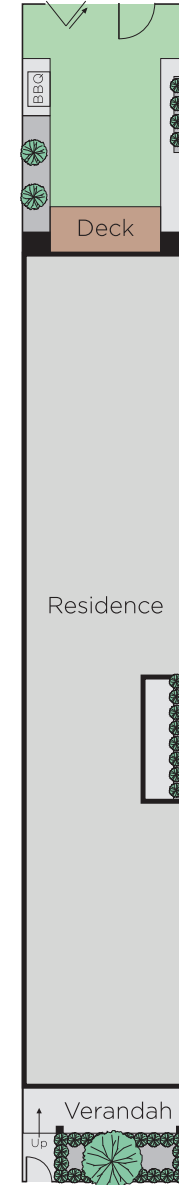
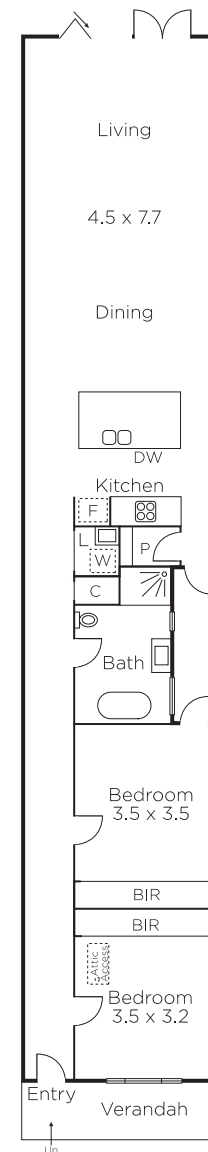
Sarah Wood
0408 902 827

Oliver Bruce
0409 856 599

Ben Manolitsas
0400 201 626

MARSHALLWHITE

101 Dundas Place, Albert Park



Disclaimer: Information provided is believed to be accurate as at the date of printing, no responsibility is taken for any errors or omissions. It is your responsibility to obtain independent, professional advice. Personal information collected from you is for security purposes and to contact you should the property sell prior to auction. We may use this information to provide you with other real estate services including referrals to authorised financial services providers. Visit our website at www.marshallwhite.com.au for our privacy policy.