



26

  
MARSHALLWHITE

26 Ross Street  
Toorak









## Lavish Living on the Edge of Toorak Village

Displaying a contemporary interpretation of classic Georgian architecture, this luxuriously proportioned and finished residence's instant appeal is further enhanced by its coveted location just metres from Toorak Village, Brookville Park, schools, trams and Hawksburn Village.

Radiantly light throughout, the wide parquetry entrance hall introduces an expansive living and formal dining room with a gas fireplace and Juliet balcony. Parquetry floors continue through the inviting living/dining room with gourmet kitchen featuring stone benches opening out to a leafy landscaped northeast paved garden. The superb proportions are mirrored upstairs through a light-filled main bedroom with walk in robe, marble en-suite and Juliet balcony, two additional double bedrooms with built in robes, a marble bathroom with spa-bath and study nook.

Impeccably appointed with alarm, video intercom, ducted vacuum, powder-room, laundry, ample storage, basement 4 car garage and plans for a lift.

[26rossstreet-toorak.com](http://26rossstreet-toorak.com)

3  2.5  4 

Auction Saturday 28th October at 12.30pm

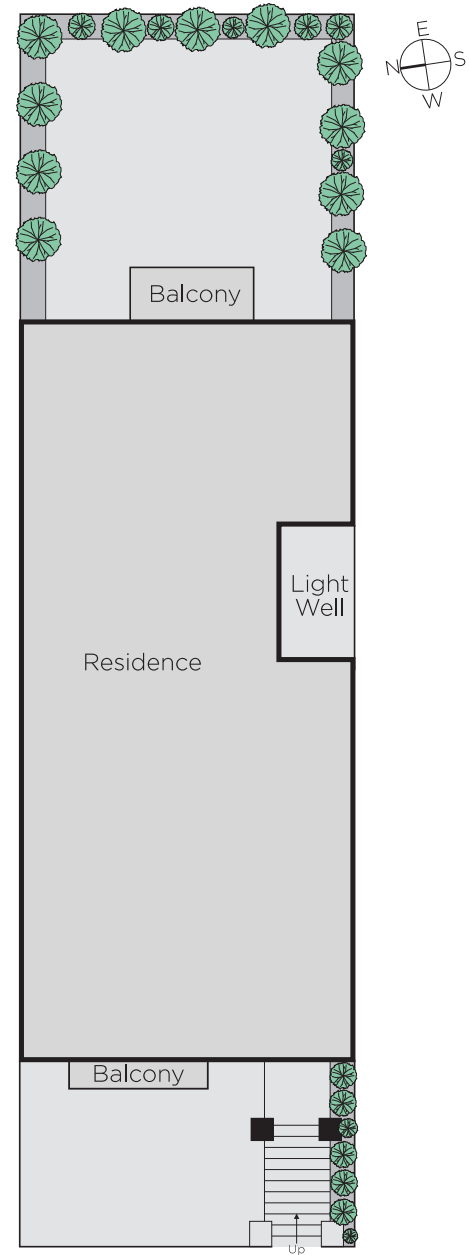
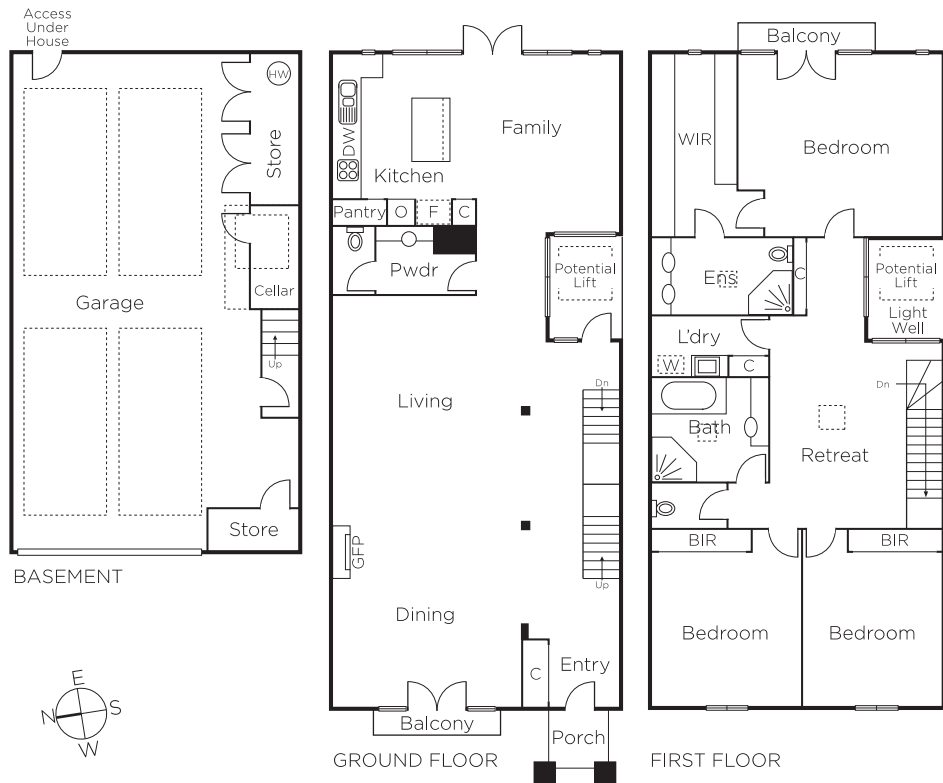
Marcus Chiminello 0411 411 271

Fraser Cahill 0400 592 572

1111 High Street Armadale

[marshallwhite.com.au](http://marshallwhite.com.au)

  
MARSHALLWHITE



Disclaimer: Information provided is believed to be accurate as at the date of printing, no responsibility is taken for any errors or omissions. It is your responsibility to obtain independent, professional advice. Personal information collected from you is for security purposes and to contact you should the property sell prior to auction. We may use this information to provide you with other real estate services including referrals to authorised financial services' providers. Visit our website at [www.marshallwhite.com.au](http://www.marshallwhite.com.au) for our privacy policy.