




MARSHALLWHITE

26 Hughes Street
Malvern East





Family Excellence, Ardrie Park Vicinity

Totally captivating inside and out, this stunning tuck-pointed solid brick period residence displays a sublime blend of classic elegance and contemporary style through exceptionally generous and superbly zoned family dimensions. An evocative tessellated verandah introduces the wide entrance hall featuring dark timber floors and high ceilings and a beautiful sitting room with open fireplace. Bathed in natural light and impressively proportioned, the inviting living and dining areas are either side of the gourmet stone kitchen. The living spaces open out to a private hedged northeast garden with large entertaining terrace. An abundance of accommodation comprises a main bedroom with walk in robe and designer en-suite, three additional double bedrooms, a fitted study and stylish family bathroom. Desirably situated near Ardrie Park, Terminus Village and trams and schools, it is impeccably appointed with an alarm, video intercom, powder-room, laundry, garden shed, auto gate and carport. Land size: 571sqm approx.

26hughesstreet-malverneast.com

4  2  2 

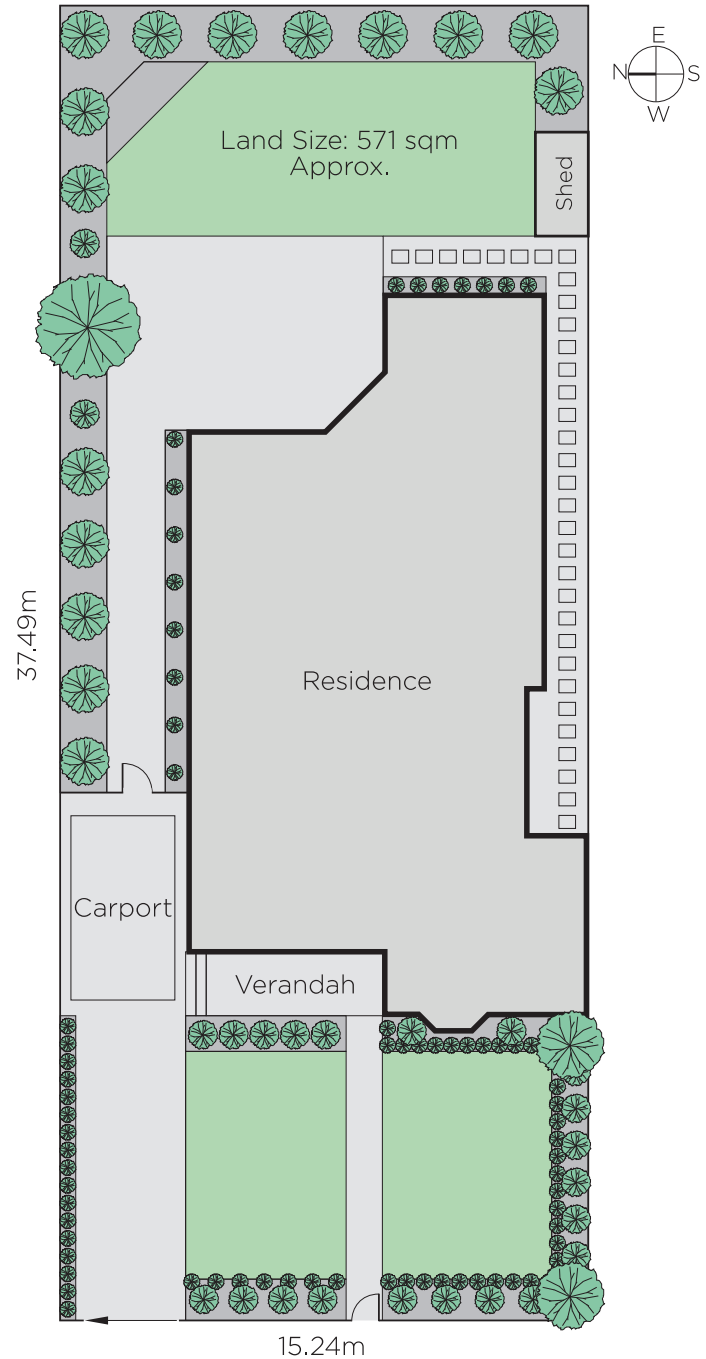
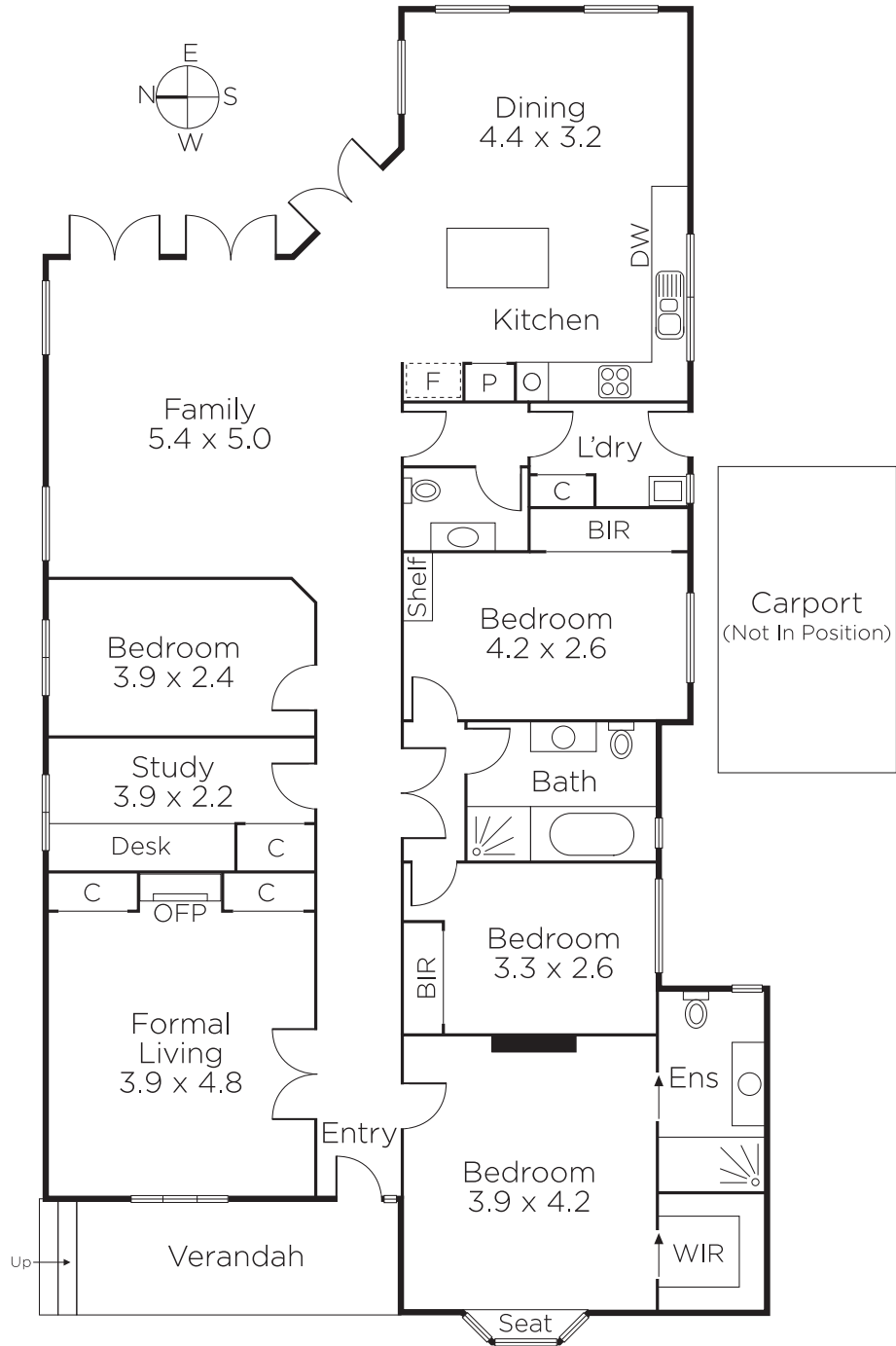
Auction Saturday 26th May at 10.30am

Daniel Wheeler
0411 676 058

Justin Krongold
0403 163 355


MARSHALLWHITE

1111 High Street, Armadale



Disclaimer: Information provided is believed to be accurate as at the date of printing, no responsibility is taken for any errors or omissions. It is your responsibility to obtain independent, professional advice. Personal information collected from you is for security purposes and to contact you should the property sell prior to auction. We may use this information to provide you with other real estate services including referrals to authorised financial services' providers. Visit our website at www.marshallwhite.com.au for our privacy policy.