



MARSHALLWHITE

26 Hartington Street
Kew



"Ballara" c1903

This captivating Edwardian home, renovated to the highest standards is highlighted by unexpectedly spacious, zoned living & entertaining areas over two levels. Includes a Baltic Pine hallway, 4/5 bedrooms (main/WIR/ensuite), study/5th bedroom, two family bathrooms, formal lounge & dining rooms; plus a generous upstairs retreat. A superb granite/Blanco kitchen overlooks an expansive family/meals area opening out to a lovely rear garden featuring north-facing split-level deck, paved casual dining & solar/gas heated pool with water feature & spa all gently shaded by a magnificent Golden Elm tree.

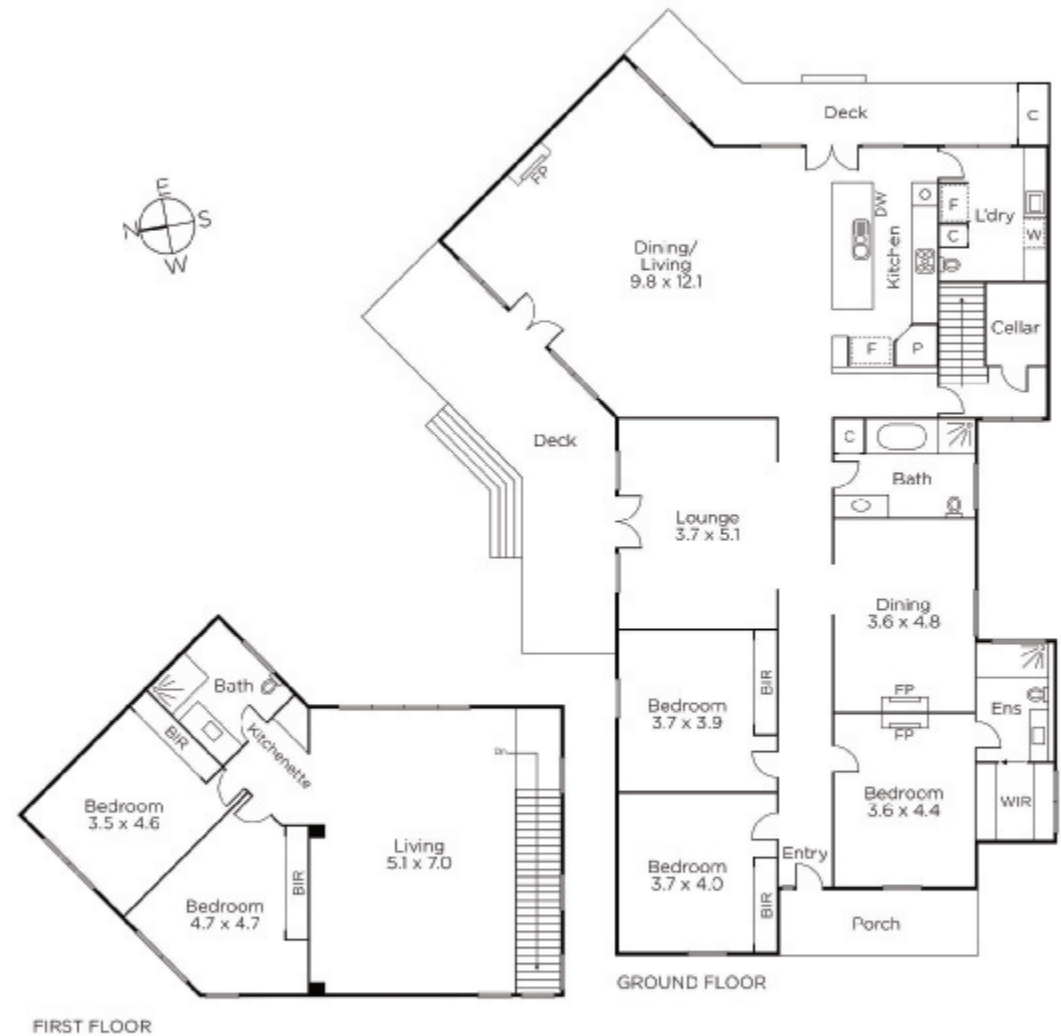
26hartingtonstreet-kew.com

5 3 2

Auction Saturday 5th May at 11.30am

Robert Ding
0418 858 393

James Tostevin
0417 003 333



MARSHALLWHITE

801 Glenferrie Road, Hawthorn

Disclaimer: Information provided is believed to be accurate as at the date of printing, no responsibility is taken for any errors or omissions. It is your responsibility to obtain independent, professional advice. Personal information collected from you is for security purposes and to contact you should the property sell prior to auction. We may use this information to provide you with other real estate services including referrals to authorised financial services providers. Visit our website at www.marshallwhite.com.au for our privacy policy.