



54


MARSHALLWHITE

2/54 Wattle Road
Hawthorn





Compelling Boutique Luxury

Spectacular in scale and lavishly finished, this luxurious ground level boutique residence, one of only four, impressively showcases contemporary European elegance at its finest in a coveted location near Glenferrie Road shops and restaurants, Hawthorn and Glenferrie stations and schools. High ceilings and oak parquet floors define open plan living and dining areas of exceptional proportions that are ideal for both relaxed living and entertaining on a grand scale. Appointed with a gas log fireplace and a gourmet kitchen featuring Calacatta marble benches and premium Miele appliances including a coffee maker and integrated fridge/freezer, the living spaces open through bi-fold doors to a private northeast courtyard with a bluestone terrace. The beautiful main bedroom with opulent en-suite and walk in robe opens to a private west-facing landscaped courtyard. In a separate wing, two additional double bedrooms with built in robes share a designer en-suite. Impeccably appointed with alarm, video intercom, powder-room, laundry, ample storage and two basement car-spaces.

[2-54wattleroad-hawthorn.com](https://www.2-54wattleroad-hawthorn.com)

3  2  2 

Auction Saturday 12th May at 10.30am

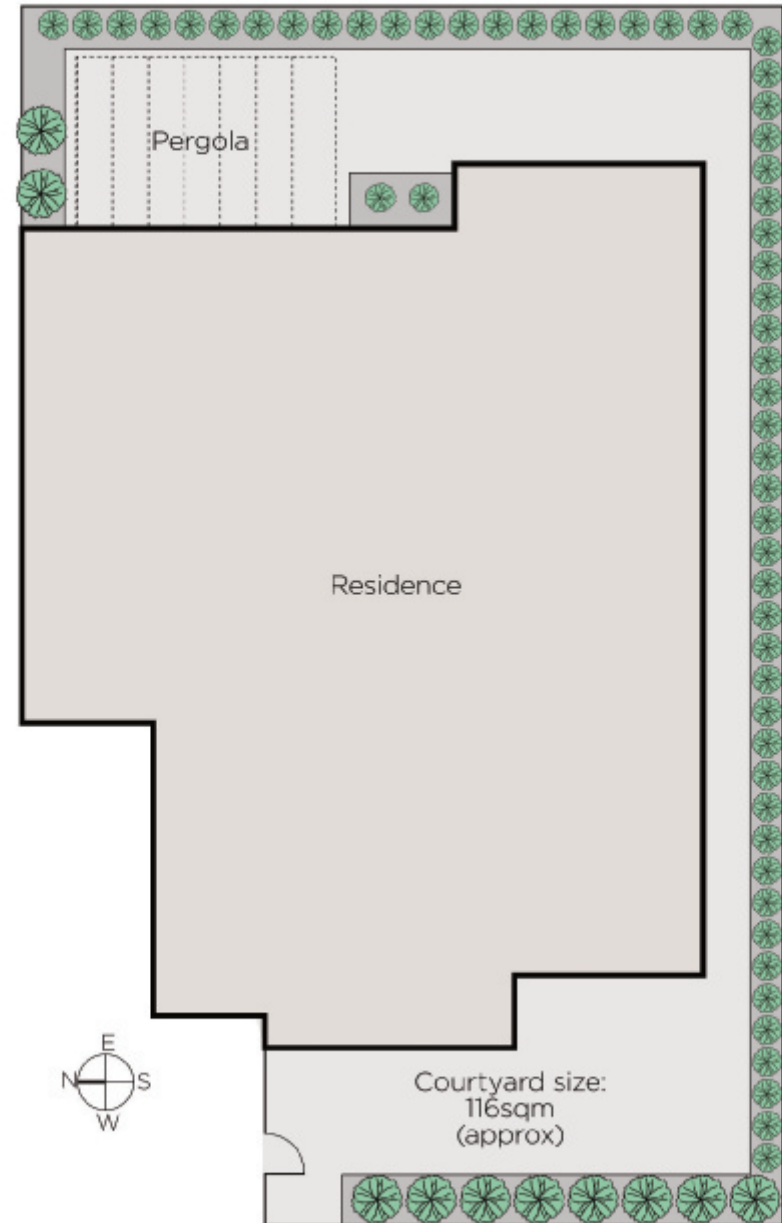
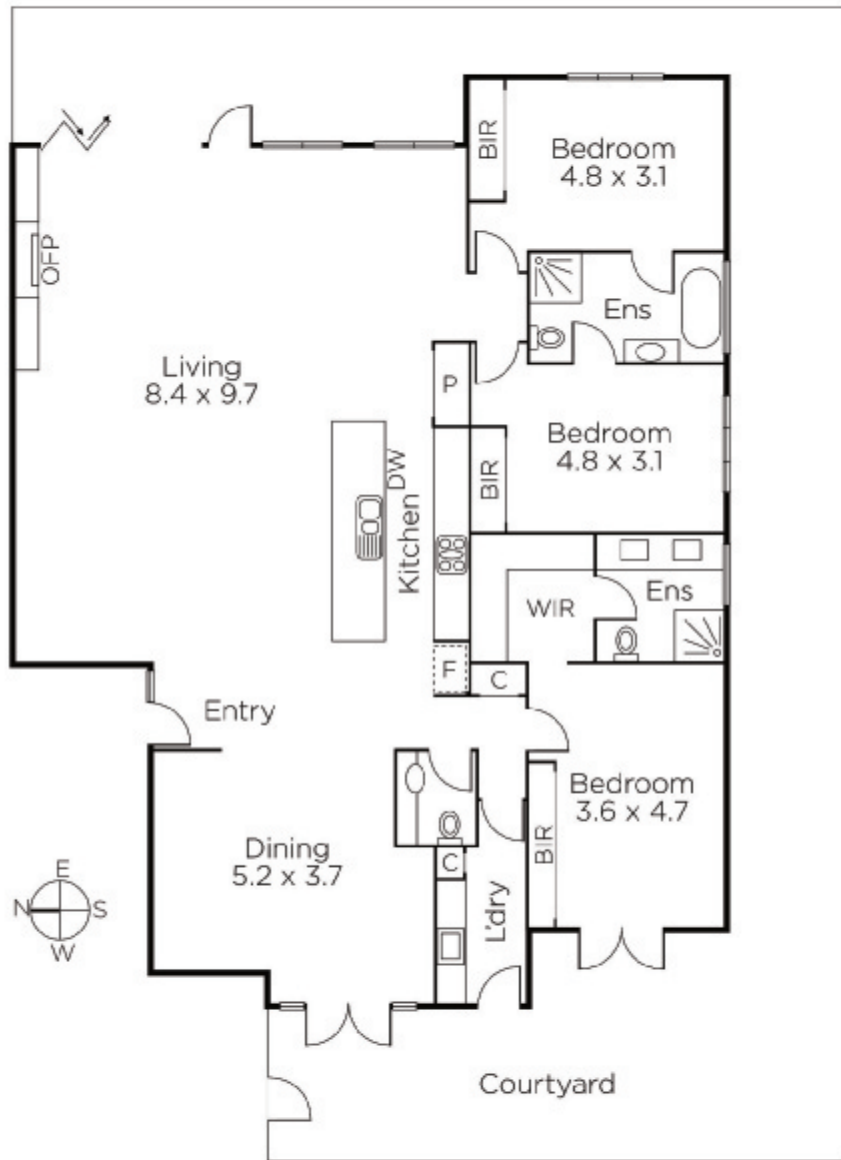
Duane Wolowiec
0418 567 581

Damian O'Sullivan
0418 566 916

Luke Saville
0437 720 806


MARSHALLWHITE

801 Glenferrie Road, Hawthorn



Disclaimer: Information provided is believed to be accurate as at the date of printing, no responsibility is taken for any errors or omissions. It is your responsibility to obtain independent, professional advice. Personal information collected from you is for security purposes and to contact you should the property sell prior to auction. We may use this information to provide you with other real estate services including referrals to authorised financial services' providers. Visit our website at www.marshallwhite.com.au for our privacy policy.