



MARSHALLWHITE

2/53 Chaucer Crescent
Canterbury

02



"Abingdon" - Living on the Park

Enjoying a glorious leafy outlook to the park opposite, this sensational garden residence's superbly presented, light-filled and stylish interior spaces deliver enviable lock up and leave lifestyle appeal near Maling Rd, Canterbury station, Canterbury Gardens and schools. The generous living/dining room with a gourmet kitchen command wonderful leafy park views. The main bedroom with walk in robe and chic en-suite is in its own wing while the second double bedroom with built in robe and stylish bathroom and a study nook are in a separate wing. Includes an alarm, video intercom and basement car-space.

2-53chaucercrescent-canterbury.com

2 2 1

Auction Saturday 19th May at 10.30am

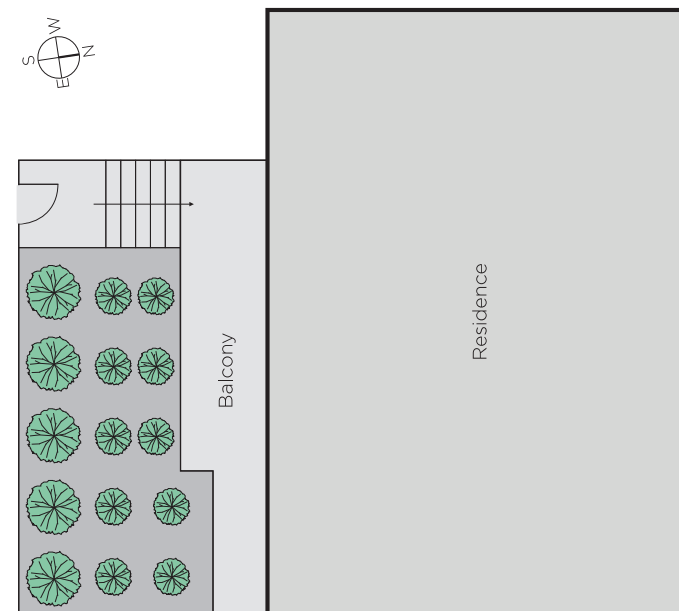
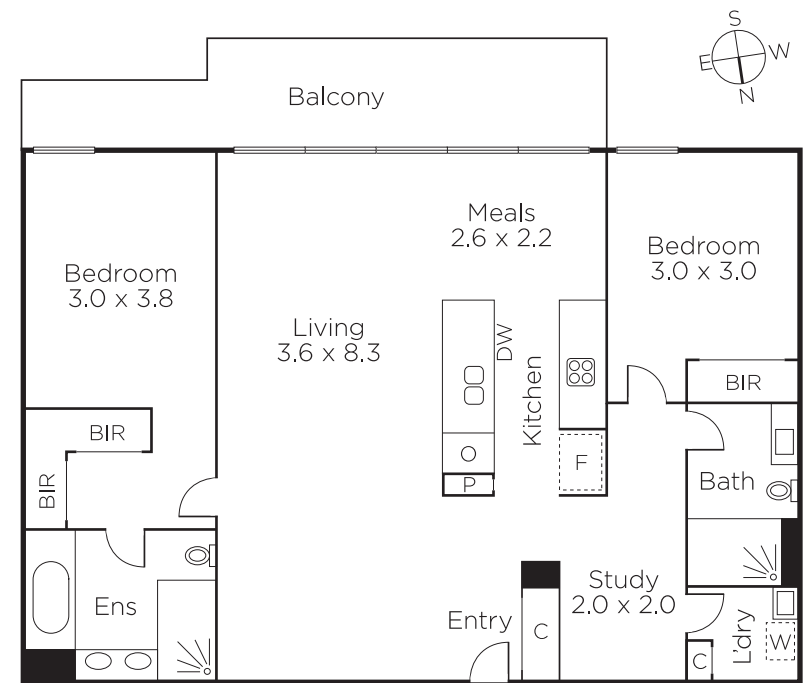
Stuart Evans
0402 067 710

Duane Wolowiec
0418 567 581

Grayson Rayner
0433 654 744


MARSHALLWHITE

801 Glenferrie Road, Hawthorn



Disclaimer: Information provided is believed to be accurate as at the date of printing, no responsibility is taken for any errors or omissions. It is your responsibility to obtain independent, professional advice. Personal information collected from you is for security purposes and to contact you should the property sell prior to auction. We may use this information to provide you with other real estate services including referrals to authorised financial services providers. Visit our website at www.marshallwhite.com.au for our privacy policy.