



MARSHALLWHITE

2/51 Wandsworth
Road
Surrey Hills





Classical Elegance - Sunny Single Level Living

Benefitting from a private and secure rear position plus a preferred northern rear aspect this classic single-level contemporary town residence offers luxurious low-maintenance surroundings that are ideally matched to today's lifestyle offering both formal and informal living areas, plenty of bright natural light and leafy north-facing paved courtyard and garden. Providing an exceptional opportunity for young professionals, families or retirees scaling down without compromising on quality or a desirable Surrey Hills lifestyle location.

Features include an attractive brick and rendered façade preceding a spacious neutral toned interior with polished timber entrance hall flowing to a combined sitting and dining room, stylish open-plan black granite and Euro stainless steel kitchen with informal dining/living opening to the courtyard. Complemented by three bedrooms, main with a WIR and ensuite, a pristine family bathroom, powder room and laundry. Other features include intercom entry, alarm system, ducted heating & cooling, watering system, easy care gardens, auto gates to remote double garage with secure internal access and turning area.

2-51wandsworthroad-surreyhills.com

3  2  2 

Auction Saturday 19th August at 9.30am

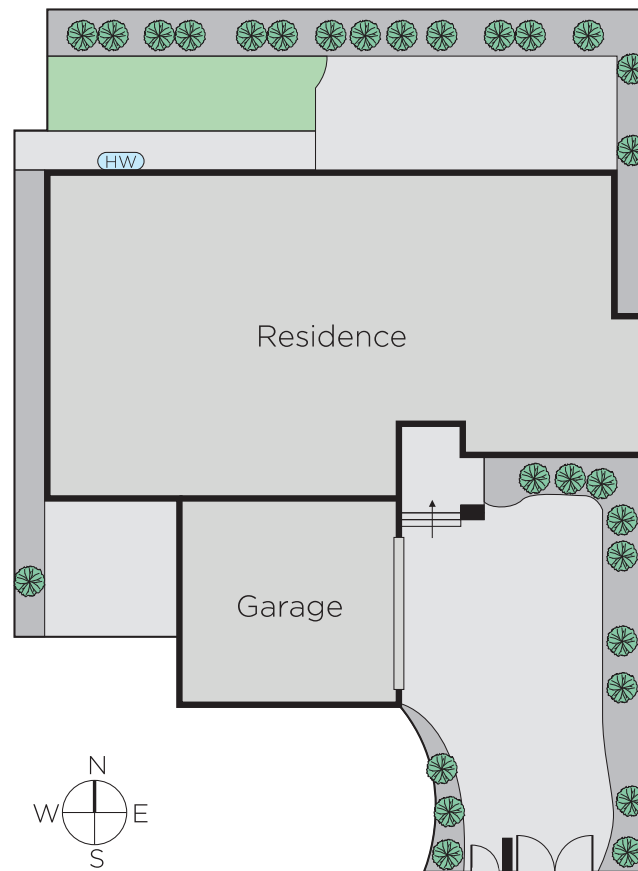
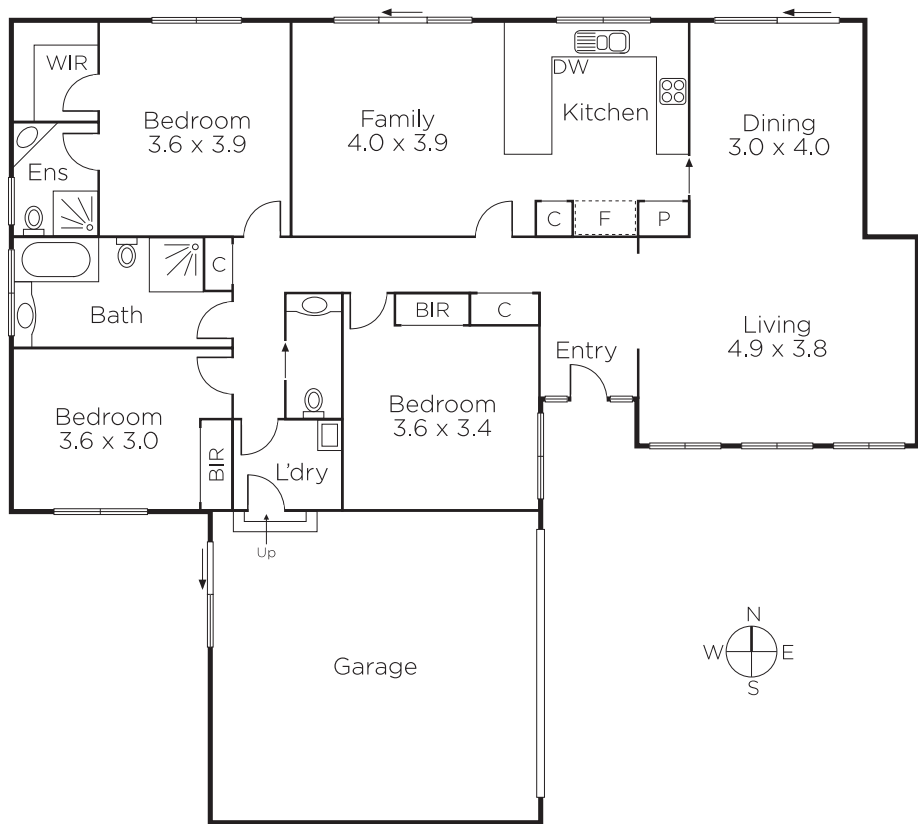
James Tostevin 0417 003 333

Charlie Tostevin 0431 713 205

801 Glenferrie Road Hawthorn

marshallwhite.com.au


MARSHALLWHITE



Disclaimer: Information provided is believed to be accurate as at the date of printing, no responsibility is taken for any errors or omissions. It is your responsibility to obtain independent, professional advice. Personal information collected from you is for security purposes and to contact you should the property sell prior to auction. We may use this information to provide you with other real estate services including referrals to authorised financial services' providers. Visit our website at www.marshallwhite.com.au for our privacy policy.