



MARSHALLWHITE

25 Mozart Street
St Kilda



Enticing Style, Envable Position

On the edge of the St Kilda Botanic gardens, this totally captivating solid brick Edwardian residence offers an impressive blend of period elegance & contemporary style near schools, trams, Acland St, Carlisle St & the beach. Behind a picturesque landscaped garden, the L-shaped entrance hall featuring high ceilings & solid timber floors introduces three spacious bedrooms with open fireplaces & a stylish central bathroom. A generously proportioned living/dining room with modern kitchen & light-filled study open to a private garden. Includes alarm, powder-room/laundry, store-room, irrigation & pull-down attic storage.

25mozartstreet-stkilda.com

3 1

Auction Saturday 23rd June at 10.30am

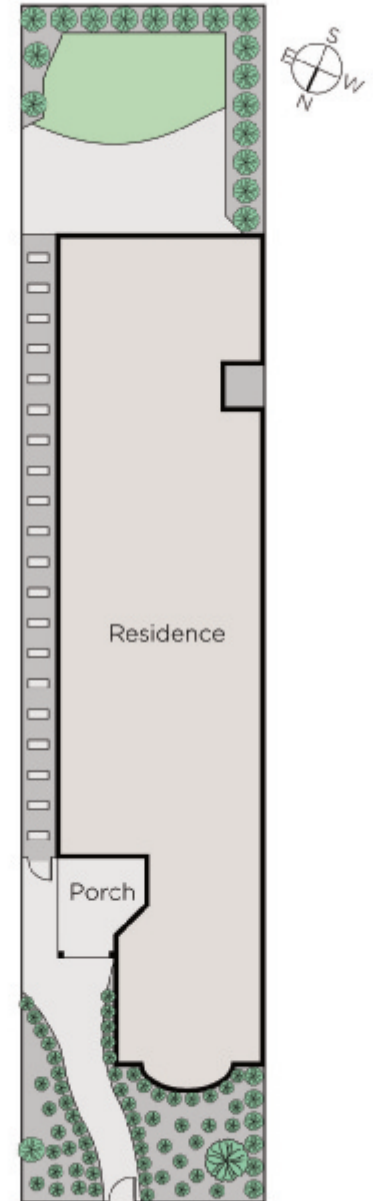
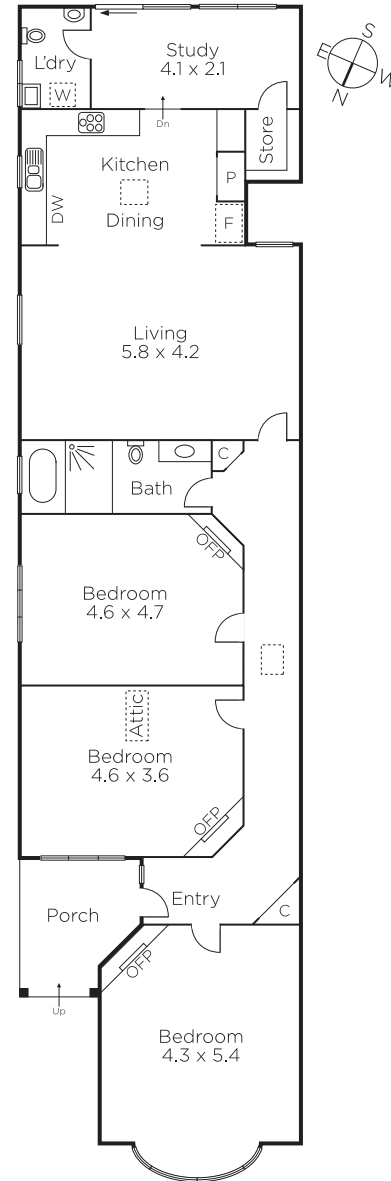
Sam Hobbs
0404 164 444

Alyce Fleming
0499 082 614

Robin Parker
0409 336 282


MARSHALLWHITE

225 Bay Street, Brighton



Disclaimer: Information provided is believed to be accurate as at the date of printing, no responsibility is taken for any errors or omissions. It is your responsibility to obtain independent, professional advice. Personal information collected from you is for security purposes and to contact you should the property sell prior to auction. We may use this information to provide you with other real estate services including referrals to authorised financial services providers. Visit our website at www.marshallwhite.com.au for our privacy policy.