



AVALON



MARSHALLWHITE

25 Erasmus Street
Surrey Hills





"Avalon"

Captivating charm, a glorious north-facing garden setting and prized leafy location highlight the immeasurable family appeal of this delightful Edwardian residence. Generous dimensions completely meet current day needs while also offering the opportunity to further update if desired (STCA). Decorative ceilings, leadlight windows and timber fretwork display wonderful period charm in the wide central hallway leading to an elegant sitting room and fifth bedroom or generous study with open fireplace. Timber floors flow through the light-filled dining room with open fireplace, superbly appointed kitchen and spacious living room opening to the deep leafy private north-facing garden with double carport via rear lane. The gorgeous main bedroom with open fireplace and built in robe and a period style bathroom are downstairs while a children's zone upstairs comprises three additional double bedrooms, walk in robe and a bathroom. Enjoying close proximity to Surrey Park, Union Rd Village, Surrey Hills station, schools and Box Hill Central, it also includes an alarm, laundry and sprinkler system. Land size: 680sqm approx.

25erasmustreet-surreyhills.com

5 2 2

Auction Saturday 24th March at 2pm

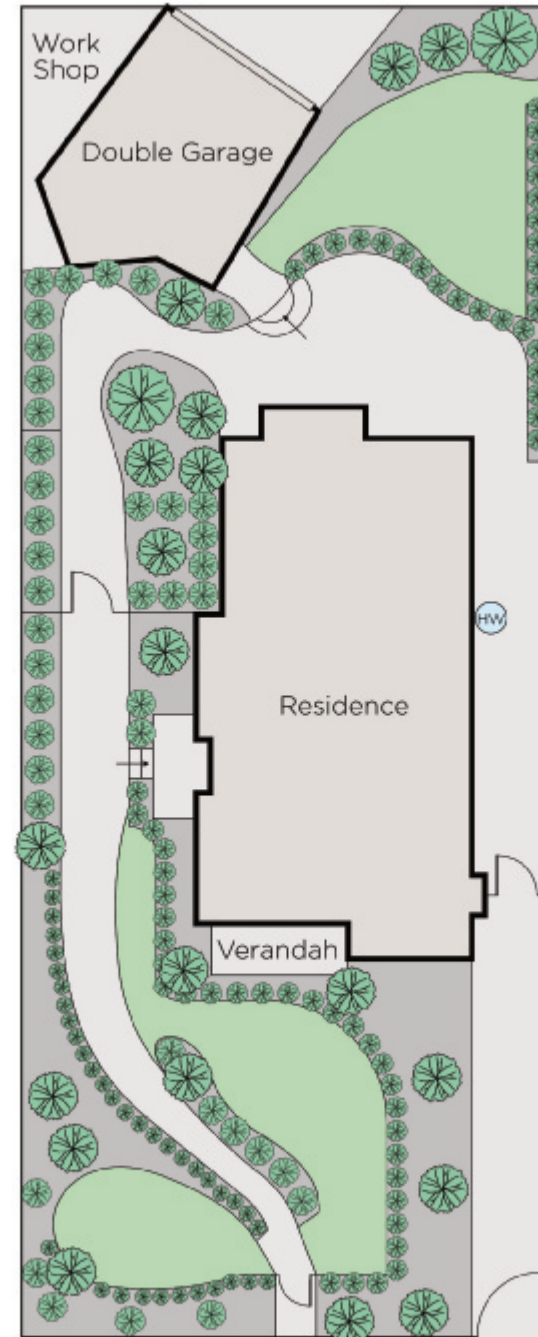
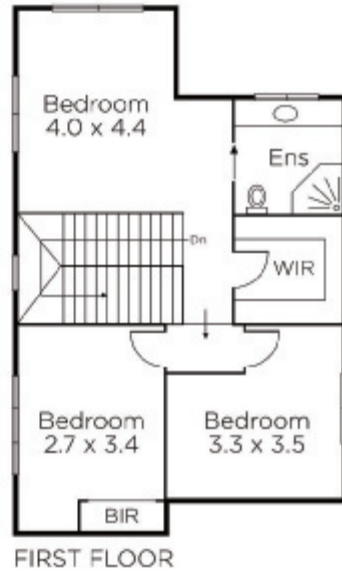
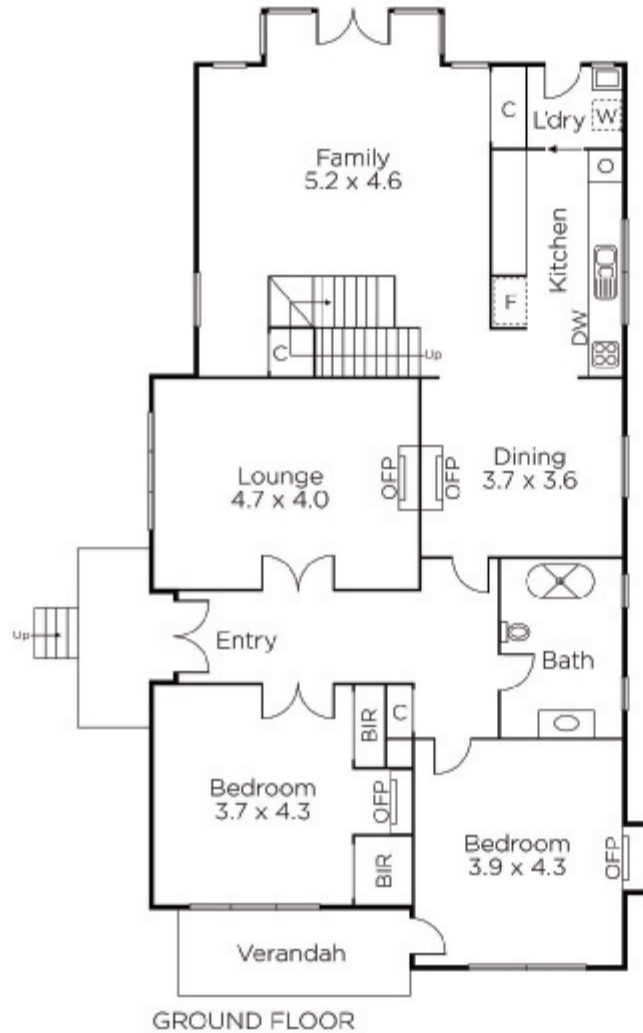
Stuart Evans
0402 067 710

Duane Wolowiec
0418 567 581

James Tostevin
0417 003 333


MARSHALLWHITE

801 Glenferrie Road, Hawthorn



Disclaimer: Information provided is believed to be accurate as at the date of printing, no responsibility is taken for any errors or omissions. It is your responsibility to obtain independent, professional advice. Personal information collected from you is for security purposes and to contact you should the property sell prior to auction. We may use this information to provide you with other real estate services including referrals to authorised financial services' providers. Visit our website at www.marshallwhite.com.au for our privacy policy.